

**Round 5 results — Run sab20.5.metadocs\_m submitted from sabir**

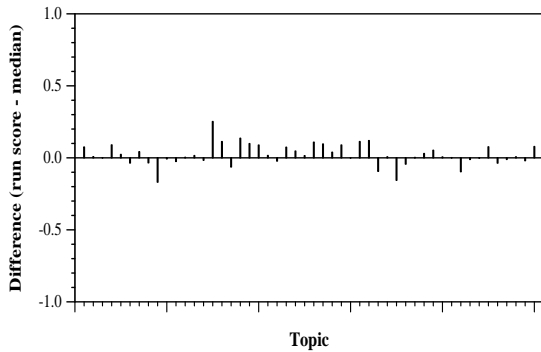
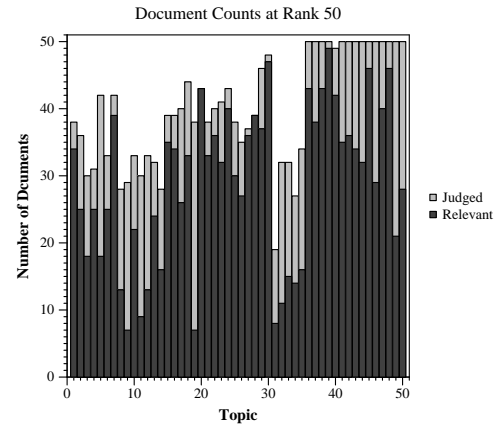
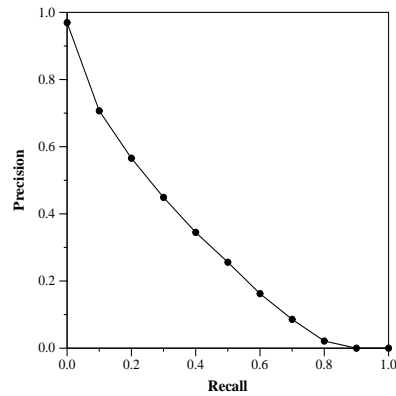
**Run Description**

Standard SMART vector run based on Lnu docs (pivot 130,slope.12 for JSON. pivot 110, slope.24 for metadata), ltu query weighting. Doc indexing - if only metadata info exists for a docid, that is used with Lnu weights. Each JSON doc is assigned final indexing as  $0.4 * \text{Metadata\_Lnu\_vector} + 0.6 * \text{JSON\_Lnu\_vector}$ . After inverted retrieval, the highest similarity for each cord\_uid is used.

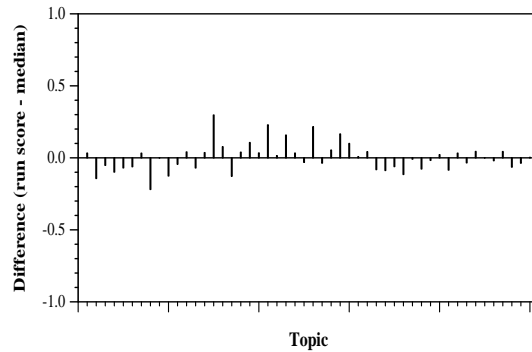
Summary Statistics	
Run ID	sab20.5.metadocs_m
Topic type	automatic
Contributed to judgment sets?	yes

Overall measures	
Number of topics	50
Total number retrieved	49912
Total relevant	10910
Total relevant retrieved	6879
MAP	0.3008
Mean Bpref	0.4874
Mean NDCG@20	0.6778
Mean RBP(p=0.5)	0.7715 +0.0007

Document Level Averages	
	Precision
At 5 docs	0.8160
At 10 docs	0.7640
At 15 docs	0.7453
At 20 docs	0.7240
At 30 docs	0.6647
R-Precision	
Exact	0.3603



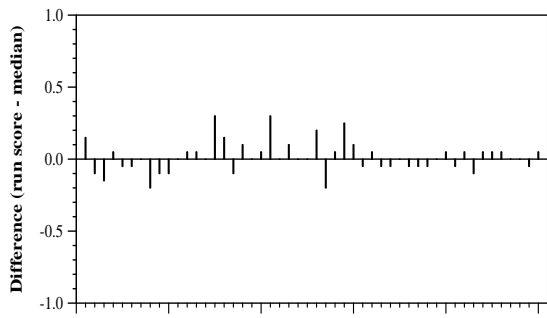
Per-topic difference from median bpref for all Round 4 runs



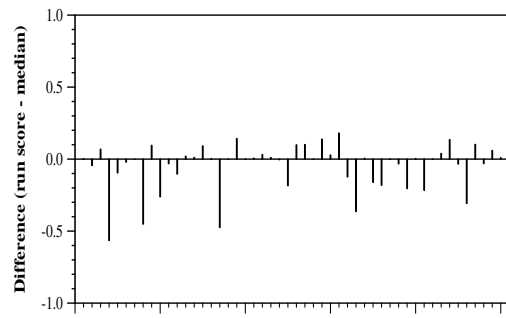
Per-topic difference from median NDCG@20 for all Round 4 runs

## Round 5 results — Run sab20.5.metadocs\_m submitted from sabir

---



Topic  
Per-topic difference from median P@20 for all Round 4 runs



Topic  
Per-topic difference from median RBP(p=0.5) for all Round 4 runs