

Round 5 results — Run sab20.5.dfo submitted from sabir

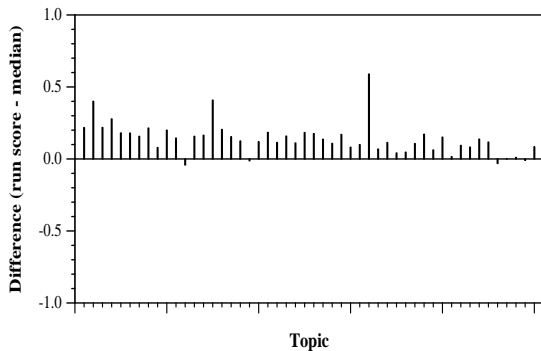
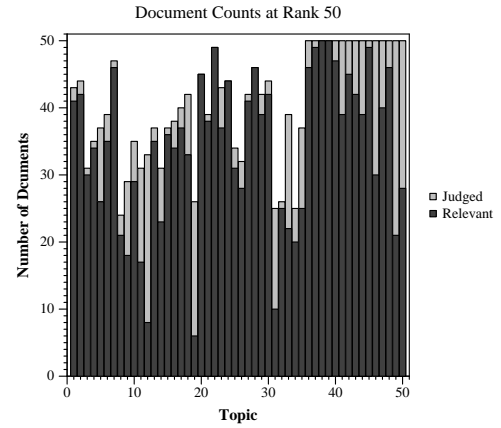
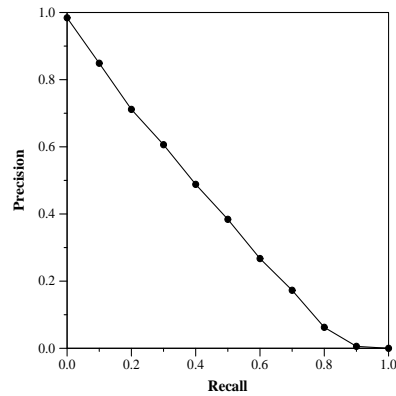
Run Description

SMART vector DFO run. Base Lnu.ltu weights, with doc indexing = 0.4 metadoc_Lnu_weighting + 0.6 JSON_Lnu_weighting if a JSON doc exists (= straight Lnu weighting if only metadata info). Run DFO algorithm (the runs are described in my TREC 2005 Routing track, and later, eg 2017 core track). Use relevance info on Rounds 1+2+3+4 collections to expand and optimize weights on that collection. Expand to top 70 terms. Optimize ignoring top 40 nonrel docs (to accomodate incomplete judgements).

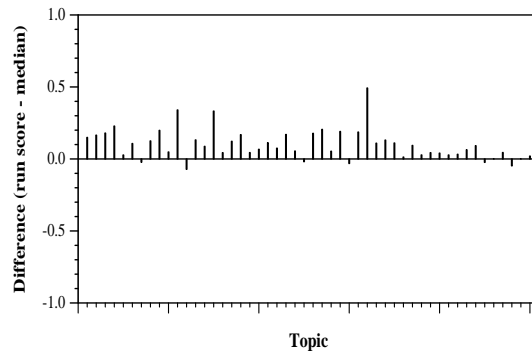
Summary Statistics	
Run ID	sab20.5.dfo
Topic type	feedback
Contributed to judgment sets?	yes

Overall measures	
Number of topics	50
Total number retrieved	49905
Total relevant	10910
Total relevant retrieved	7672
MAP	0.4001
Mean Bpref	0.6040
Mean NDCG@20	0.7743
Mean RBP(p=0.5)	0.8815 +0.0005

Document Level Averages	
	Precision
At 5 docs	0.9320
At 10 docs	0.8840
At 15 docs	0.8427
At 20 docs	0.8170
At 30 docs	0.7687
R-Precision	
Exact	0.4333

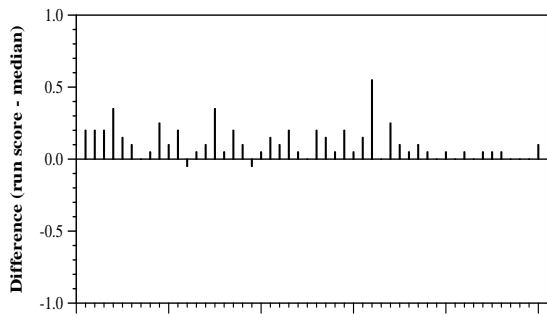


Per-topic difference from median bpref for all Round 4 runs

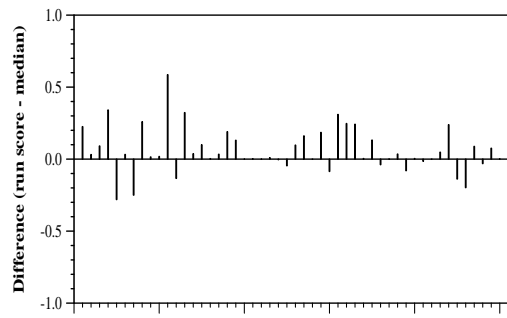


Per-topic difference from median NDCG@20 for all Round 4 runs

Round 5 results — Run sab20.5.dfo submitted from sabir



Topic
Per-topic difference from median P@20 for all Round 4 runs



Topic
Per-topic difference from median RBP(p=0.5) for all Round 4 runs