

**Round 5 results — Run sab20.5.3.dfo submitted from sabir**

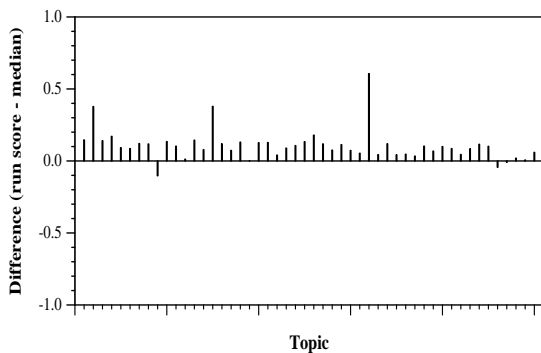
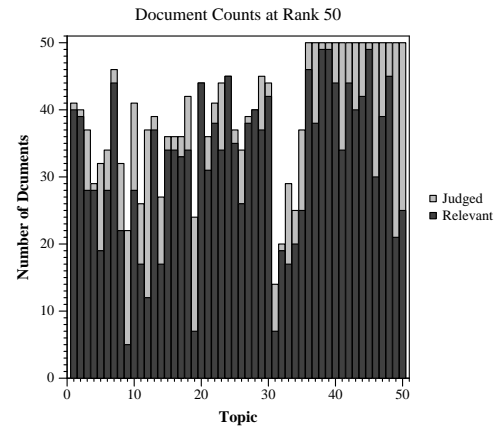
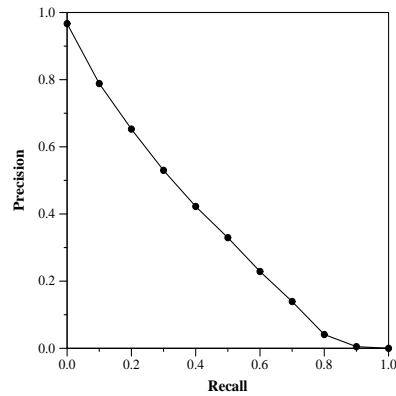
**Run Description**

SMART vector DFO run. Same retrieval and indexing as in Round 3 dfo run. Base Lnu.ltu weights, with doc indexing = 0.5 metadoc\_Lnu\_weighting + 0.7 JSON\_Lnu\_weighting if a JSON doc exists (= straight Lnu weighting if only metadata info). Run DFO algorithm (the runs are described in my TREC 2005 Routing track, and later, eg 2017 core track). Use relevance info on Rounds 1+2+3+4 collections to expand and optimize weights on that collection. Conservative run - xpan to 15 terms.

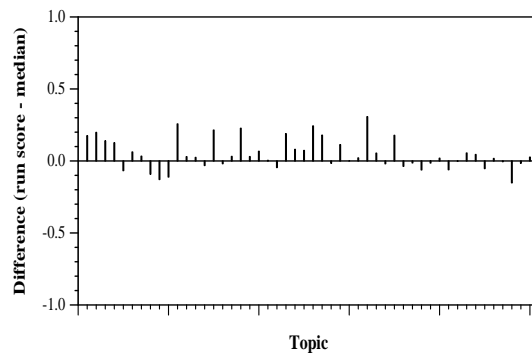
Summary Statistics	
Run ID	sab20.5.3.dfo
Topic type	feedback
Contributed to judgment sets?	yes

Overall measures	
Number of topics	50
Total number retrieved	49899
Total relevant	10910
Total relevant retrieved	7461
MAP	0.3586
Mean Bpref	0.5693
Mean NDCG@20	0.7215
Mean RBP(p=0.5)	0.8195 +0.0006

Document Level Averages	
	Precision
At 5 docs	0.8920
At 10 docs	0.8480
At 15 docs	0.7920
At 20 docs	0.7690
At 30 docs	0.7253
R-Precision	
Exact	0.3995



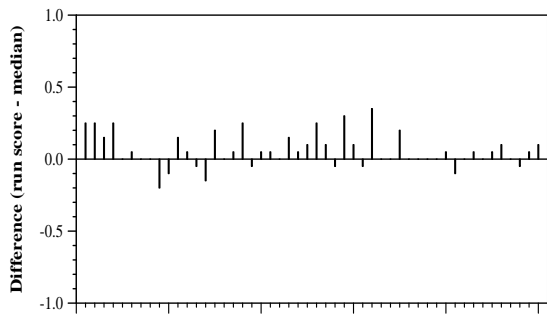
Per-topic difference from median bpref for all Round 4 runs



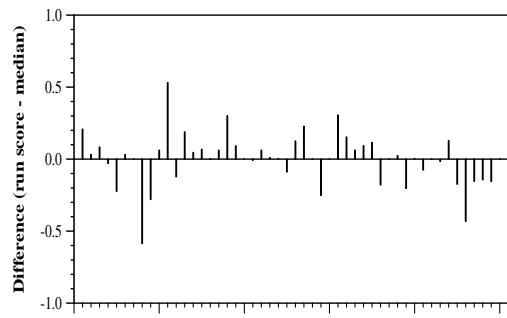
Per-topic difference from median NDCG@20 for all Round 4 runs

Round 5 results — Run sab20.5.3.dfo submitted from sabir

---



Topic  
Per-topic difference from median P@20 for all Round 4 runs



Topic  
Per-topic difference from median RBP(p=0.5) for all Round 4 runs