

Round 5 results — Run sab20.5.2.meta.docs submitted from sabir

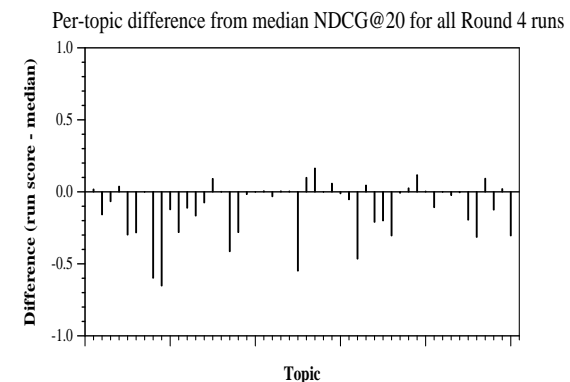
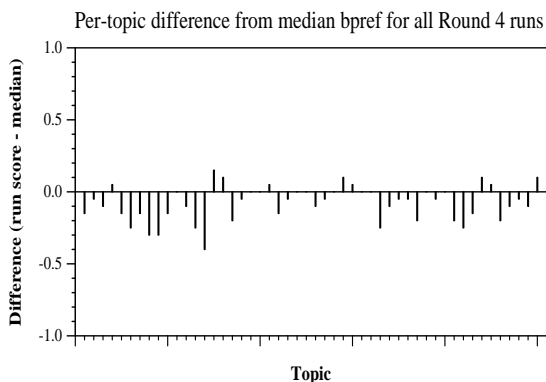
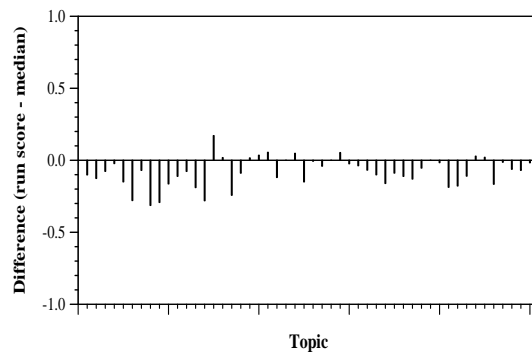
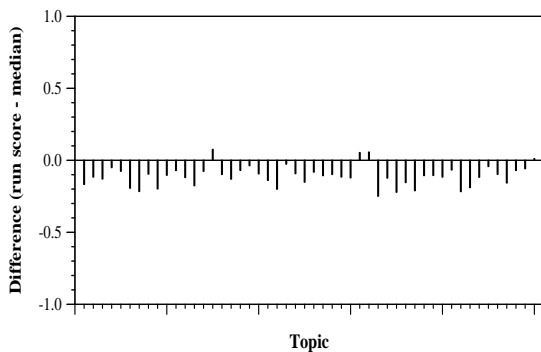
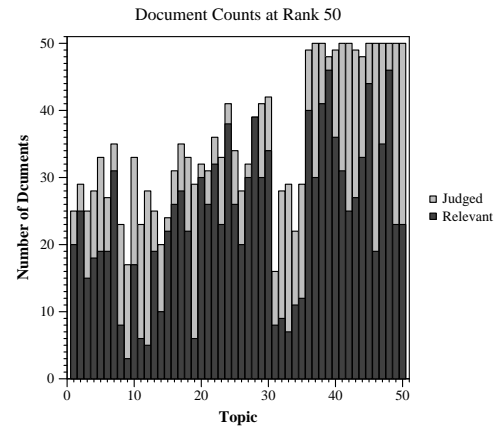
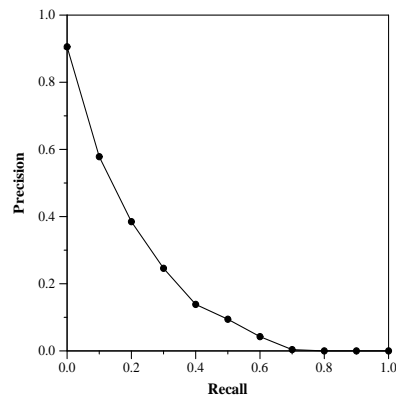
Run Description

Same retrieval and indexing as in Round 2 metadocs run. SMART vector run. Lnu.ltu weights. Separate Lnu weighted inverted files for metadata and JSON docs. Score = 1.2 \* metadata + JSON. Used full topics including narrative.

Summary Statistics	
Run ID	sab20.5.2.meta.docs
Topic type	automatic
Contributed to judgment sets?	no

Overall measures	
Number of topics	50
Total number retrieved	40945
Total relevant	10910
Total relevant retrieved	4958
MAP	0.1870
Mean Bpref	0.3567
Mean NDCG@20	0.5952
Mean RBP(p=0.5)	0.7087 +0.0028

Document Level Averages	
	Precision
At 5 docs	0.7600
At 10 docs	0.7240
At 15 docs	0.6707
At 20 docs	0.6310
At 30 docs	0.5527
R-Precision	
Exact	0.2658



Per-topic difference from median P@20 for all Round 4 runs

Per-topic difference from median RBP(p=0.5) for all Round 4 runs