

Round 5 results — Run rk\_bdl\_brx\_logit submitted from risklick

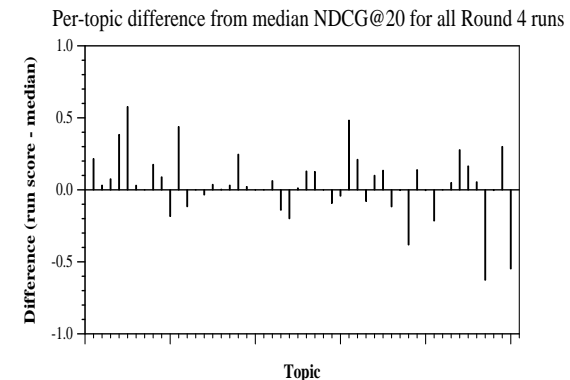
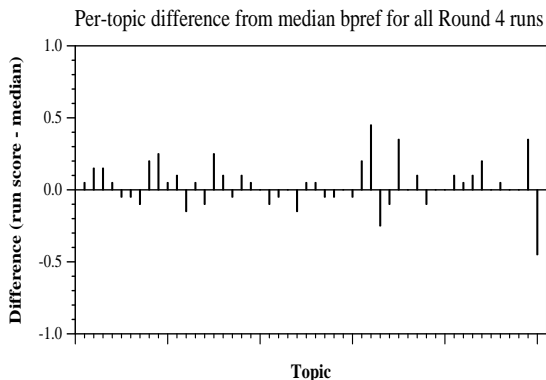
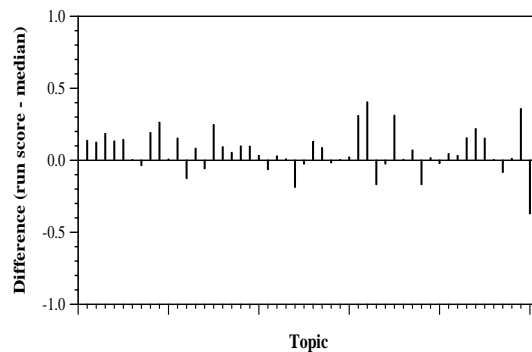
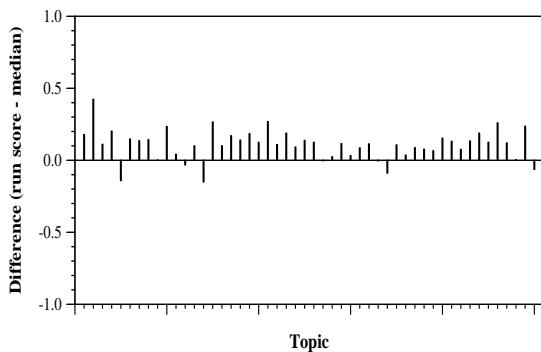
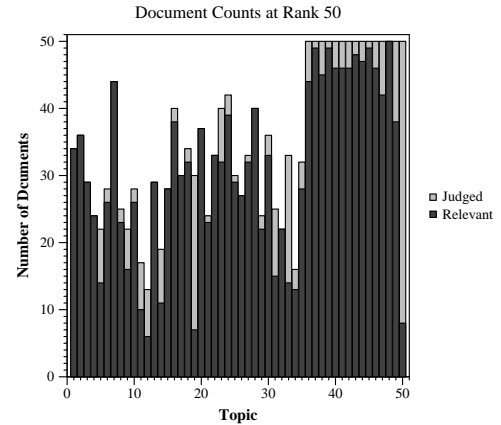
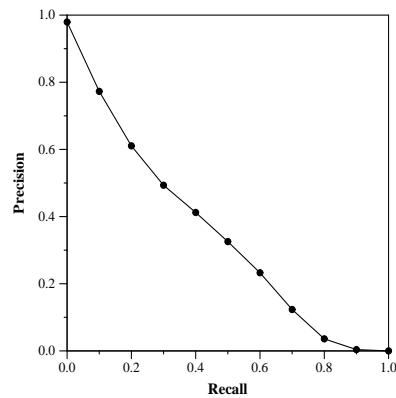
Run Description

A logistic regression model trained on round 4 QREL using features (query, question, narrative, title, abstract, etc.) of the BM25, DFR and LM Dirichlet information retrieval models and deep neural language models (BERT, RoBERTa and XLNet).

Summary Statistics	
Run ID	rk_bdl_brx_logit
Topic type	feedback
Contributed to judgment sets?	yes

Overall measures	
Number of topics	50
Total number retrieved	49813
Total relevant	10910
Total relevant retrieved	6976
MAP	0.3439
Mean Bpref	0.5719
Mean NDCG@20	0.7374
Mean RBP(p=0.5)	0.8577 +0.0013

Document Level Averages	
	Precision
At 5 docs	0.9040
At 10 docs	0.8480
At 15 docs	0.7947
At 20 docs	0.7450
At 30 docs	0.6913
R-Precision	
Exact	0.3907



Per-topic difference from median P@20 for all Round 4 runs

Per-topic difference from median RBP(p=0.5) for all Round 4 runs