

## Round 5 results — Run HKPU-SPUD-dPRF submitted from HKPU

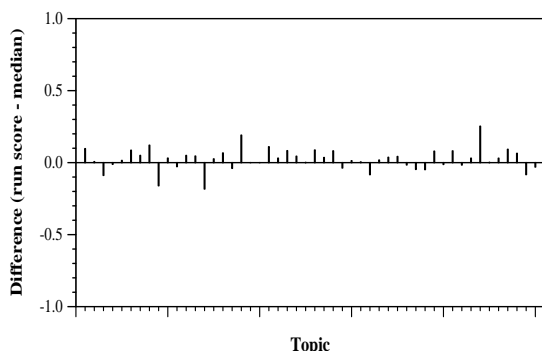
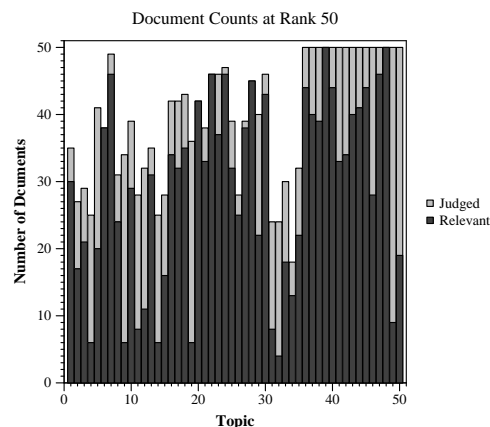
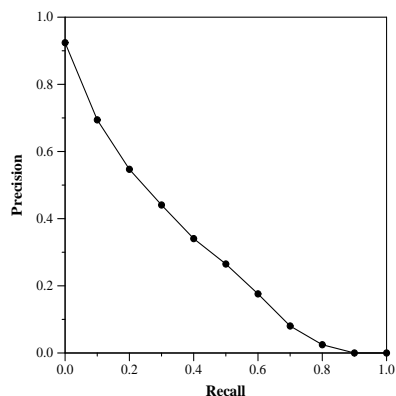
### Run Description

The index is built from the combined title and abstract fields of the metadata file. Retrieval is performed by the SPUD model (Cummins et al., A poly urn document language model for improved information retrieval. ACM TOIS 33, 4, Article 21 (2015), p.1-34.), on long queries consisting of the combined Query, Question and Narrative. Document-based retrieval with pseudo-relevance feedback is employed. The method applied in this run is the same as our submission HKPU-SPUD-pPRF in Round 4, with the exception that document-based retrieval is used in this run (HKPU-SPUD-dPRF), while passage-based retrieval is used for the previous HKPU-SPUD-pPRF. The difference between document-based and passage-based retrieval in the current task is expected to be not significant, as the documents mainly consist of short texts containing the title and the abstract.

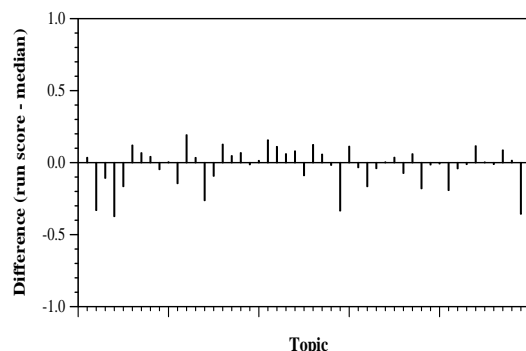
Summary Statistics	
Run ID	HKPU-SPUD-dPRF
Topic type	automatic
Contributed to judgment sets?	yes

Overall measures	
Number of topics	50
Total number retrieved	49900
Total relevant	10910
Total relevant retrieved	6702
MAP	0.2973
Mean Bpref	0.4883
Mean NDCG@20	0.6448
Mean RBP(p=0.5)	0.7013 +0.0007

Document Level Averages	
	Precision
At 5 docs	0.8040
At 10 docs	0.7540
At 15 docs	0.7173
At 20 docs	0.6890
At 30 docs	0.6440
R-Precision	
Exact	0.3479



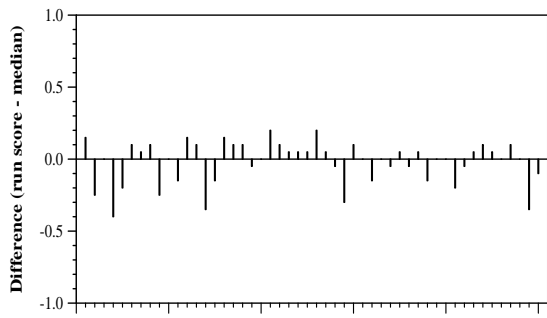
Per-topic difference from median bpref for all Round 4 runs



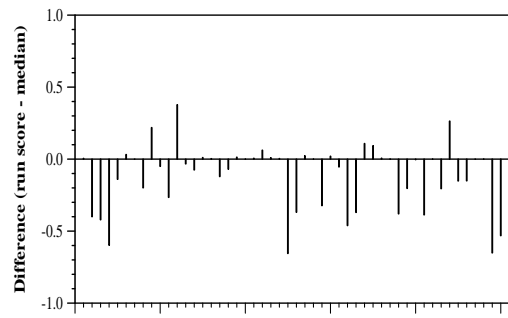
Per-topic difference from median NDCG@20 for all Round 4 runs

Round 5 results — Run HKPU-SPUD-dPRF submitted from HKPU

---



Topic  
Per-topic difference from median P@20 for all Round 4 runs



Topic  
Per-topic difference from median RBP(p=0.5) for all Round 4 runs