

Round 5 results — Run HKPU-RM3-dPRF submitted from HKPU

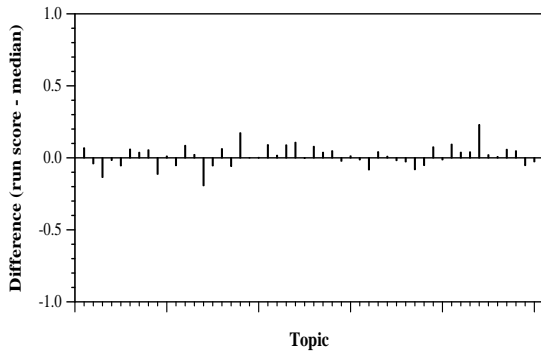
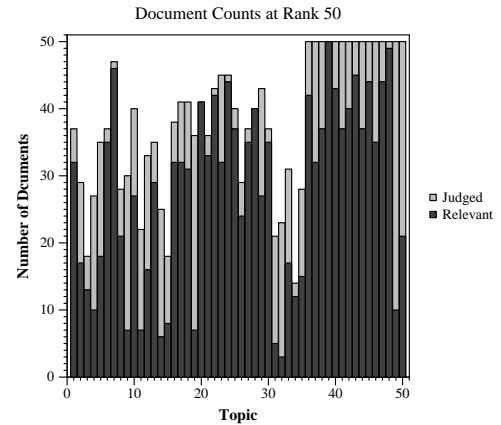
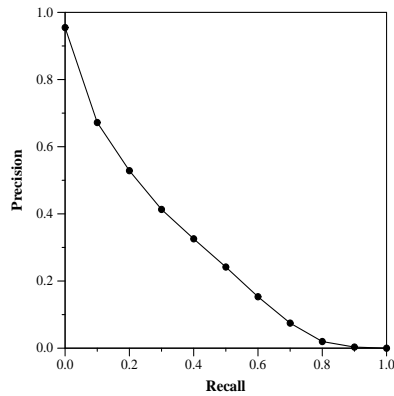
Run Description

The index is built from the combined title and abstract fields of the metadata file. Retrieval is performed by the RM3 variant of the Relevance Model (Lavrenko, V. and Croft, W.B., Relevance-based language model, In Proceedings of the ACM SIGIR (2001), pp. 120-127; and Abdul-Jaleel et al., UMass at TREC 2004. In Proceedings of TREC-13, pp. 715-725), on long queries consisting of the combined Query, Question and Narrative.

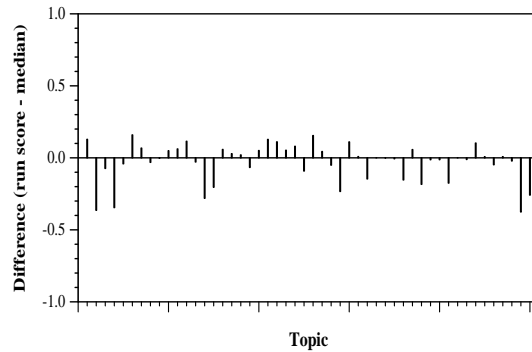
Summary Statistics	
Run ID	HKPU-RM3-dPRF
Topic type	automatic
Contributed to judgment sets?	yes

Overall measures	
Number of topics	50
Total number retrieved	49911
Total relevant	10910
Total relevant retrieved	6544
MAP	0.2850
Mean Bpref	0.4778
Mean NDCG@20	0.6437
Mean RBP(p=0.5)	0.7226 +0.0008

Document Level Averages	
	Precision
At 5 docs	0.7800
At 10 docs	0.7560
At 15 docs	0.7173
At 20 docs	0.6760
At 30 docs	0.6347
R-Precision	
Exact	0.3353

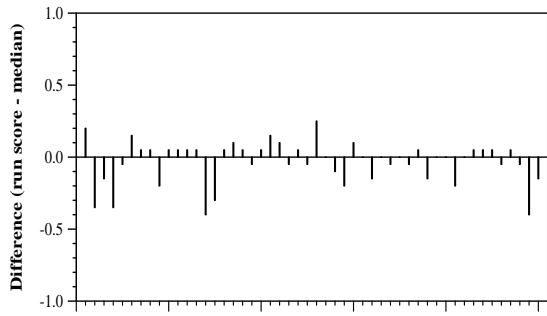


Per-topic difference from median bpref for all Round 4 runs

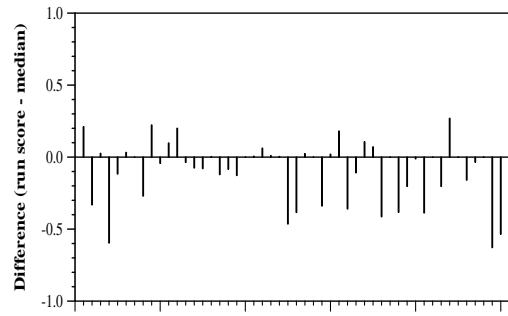


Per-topic difference from median NDCG@20 for all Round 4 runs

Round 5 results — Run HKPU-RM3-dPRF submitted from HKPU



Per-topic difference from median P@20 for all Round 4 runs



Per-topic difference from median RBP(p=0.5) for all Round 4 runs