

Round 4 results — Run sab20.4.dfo submitted from sabir

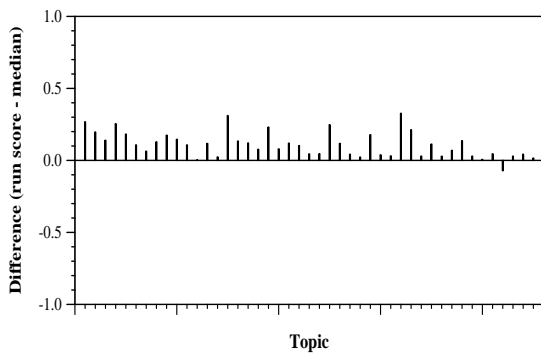
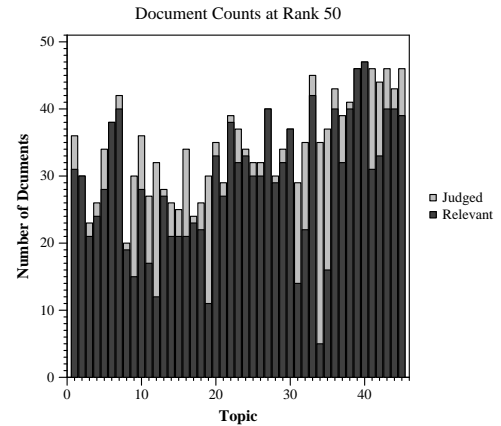
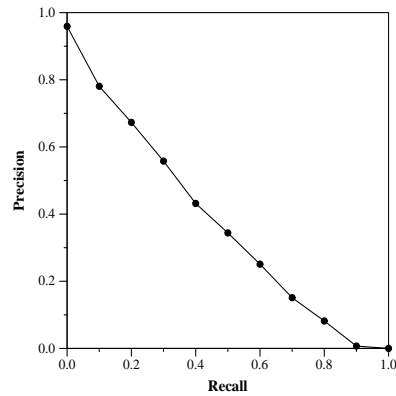
Run Description

SMART vector DFO run. Base Lnu.ltu weights, with doc indexing = 0.4 metadoc_Lnu_weighting + 0.6 JSON_Lnu_weighting if a JSON doc exists (= straight Lnu weighting if only metadata info). Run DFO algorithm (the runs are described in my TREC 2005 Routing track, and later, eg 2017 core track). Use relevance info on Rounds 1+2+3 collections to expand and optimize weights on that collection. Expand to top 50 terms. Optimize ignoring top 30 nonrel docs (to accomodate incomplete judgements).

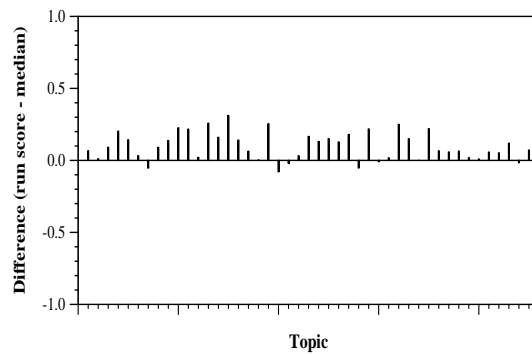
Summary Statistics	
Run ID	sab20.4.dfo
Topic type	feedback
Contributed to judgment sets?	yes

Overall measures	
Number of topics	45
Total number retrieved	44980
Total relevant	5824
Total relevant retrieved	4234
MAP	0.3722
Mean Bpref	0.6257
Mean NDCG@20	0.7247
Mean RBP(p=0.5)	0.8346 +0.0007

Document Level Averages	
	Precision
At 5 docs	0.8889
At 10 docs	0.8489
At 15 docs	0.7793
At 20 docs	0.7556
At 30 docs	0.6800
R-Precision	
Exact	0.4064

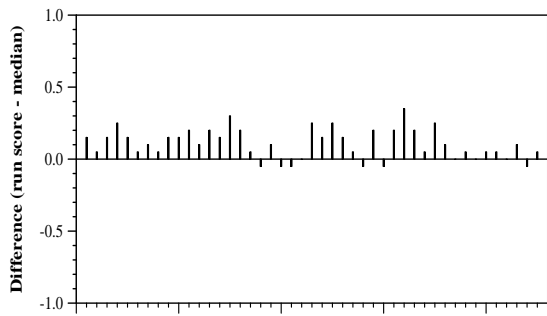


Per-topic difference from median bpref for all Round 4 runs

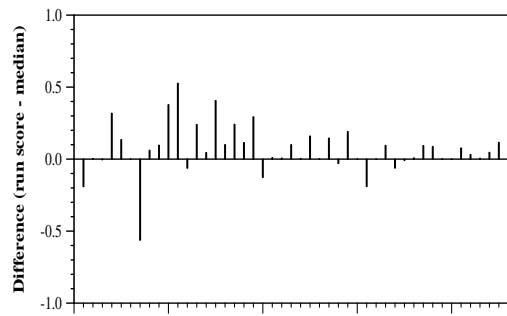


Per-topic difference from median NDCG@20 for all Round 4 runs

Round 4 results — Run sab20.4.dfo submitted from sabir



Topic
Per-topic difference from median P@20 for all Round 4 runs



Topic
Per-topic difference from median RBP(p=0.5) for all Round 4 runs