

Round 4 results — Run OHSU\_totalfusion\_avg submitted from OHSU

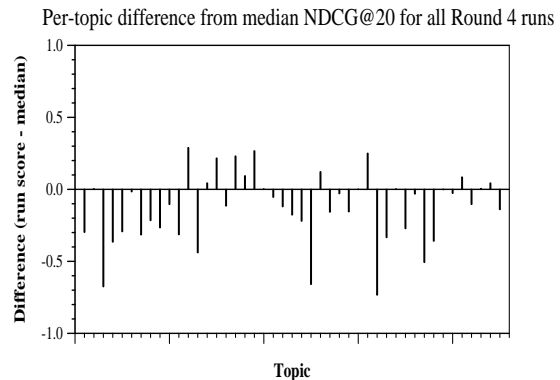
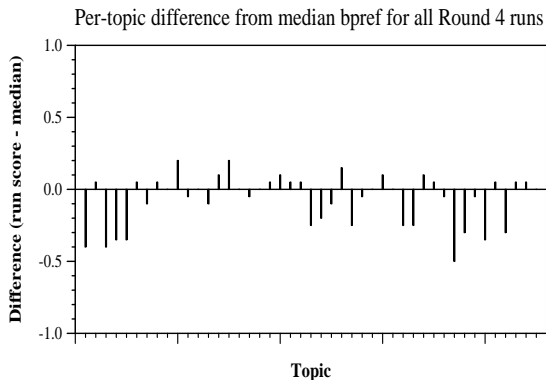
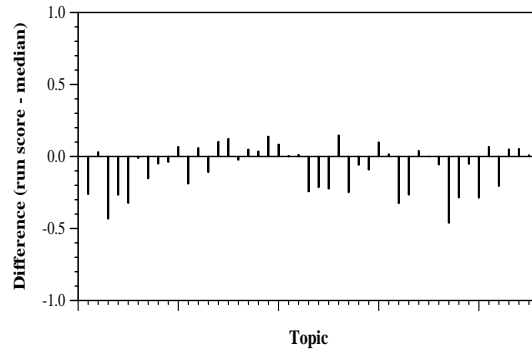
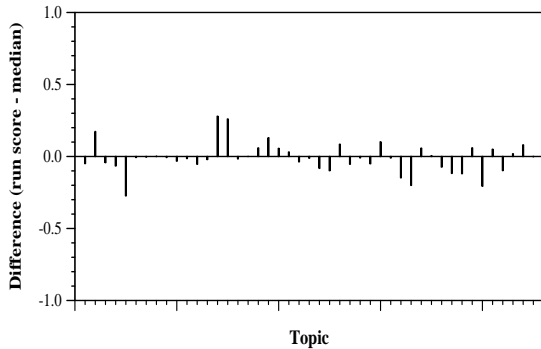
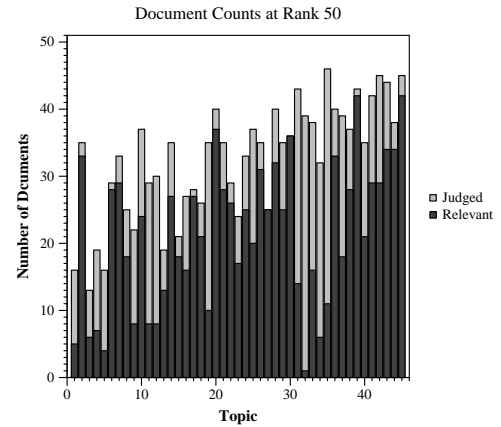
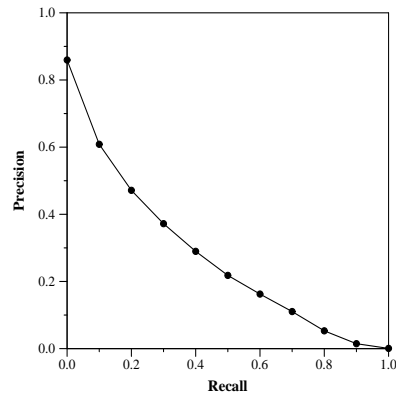
Run Description

A combination of query, question, and narrative were searched on the abstract, full text, and paragraph indices to create fusion baseline. The top 250 documents per topic were reranked using SciBERT tuned on Pubmed and CORD19.

Summary Statistics	
Run ID	OHSU_totalfusion_avg
Topic type	manual
Contributed to judgment sets?	yes

Overall measures	
Number of topics	45
Total number retrieved	44982
Total relevant	5824
Total relevant retrieved	3697
MAP	0.2638
Mean Bpref	0.5073
Mean NDCG@20	0.5458
Mean RBP(p=0.5)	0.6407 +0.0010

Document Level Averages	
	Precision
At 5 docs	0.6978
At 10 docs	0.6511
At 15 docs	0.6089
At 20 docs	0.5778
At 30 docs	0.5104
R-Precision	
Exact	0.3145



Per-topic difference from median P@20 for all Round 4 runs

Per-topic difference from median RBP(p=0.5) for all Round 4 runs