

Round 4 results — Run OHSU_R4_totalfusion submitted from OHSU

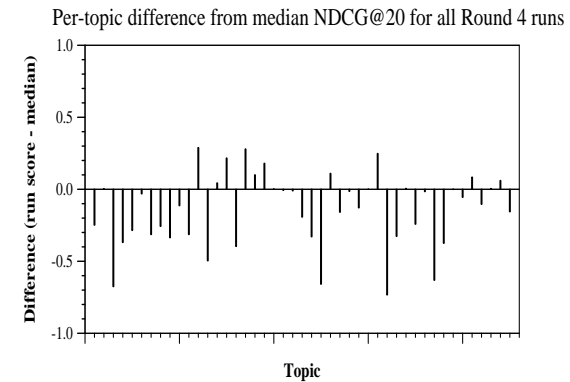
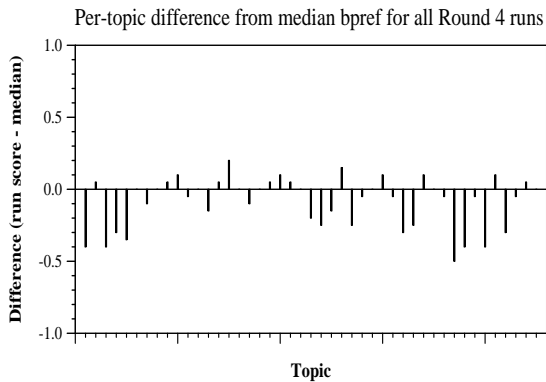
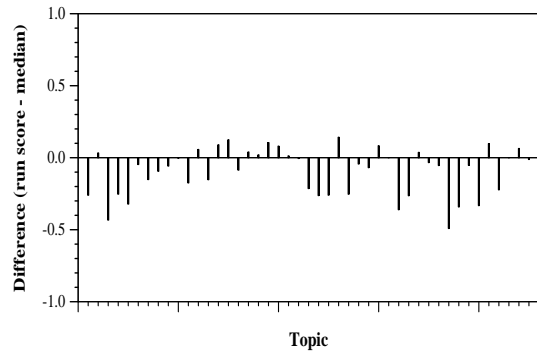
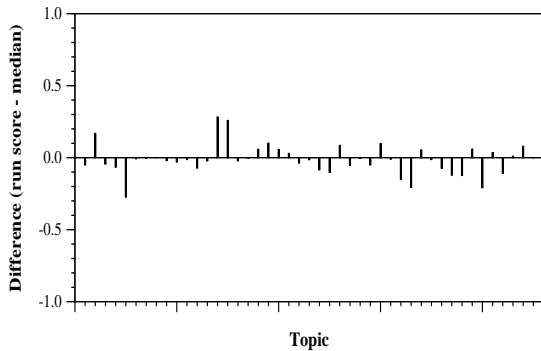
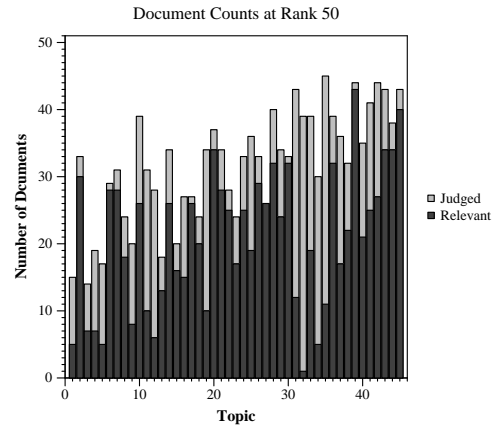
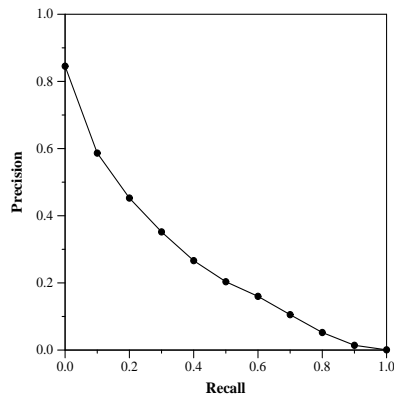
Run Description

Anserini with BM25 and RM3 reranking was used. A query consisting of processed question, query, and narrative were used to create a fusion run using the abstract, full text, and paragraph indexes.

Summary Statistics	
Run ID	OHSU_R4_totalfusion
Topic type	manual
Contributed to judgment sets?	no

Overall measures	
Number of topics	45
Total number retrieved	44982
Total relevant	5824
Total relevant retrieved	3697
MAP	0.2524
Mean Bpref	0.5038
Mean NDCG@20	0.5319
Mean RBP(p=0.5)	0.6294 +0.0049

Document Level Averages	
	Precision
At 5 docs	0.7022
At 10 docs	0.6356
At 15 docs	0.5956
At 20 docs	0.5622
At 30 docs	0.4993
R-Precision	
Exact	0.3062



Per-topic difference from median P@20 for all Round 4 runs

Per-topic difference from median RBP(p=0.5) for all Round 4 runs