

Round 4 results — Run HKPU-SPUD-pPRF submitted from HKPU

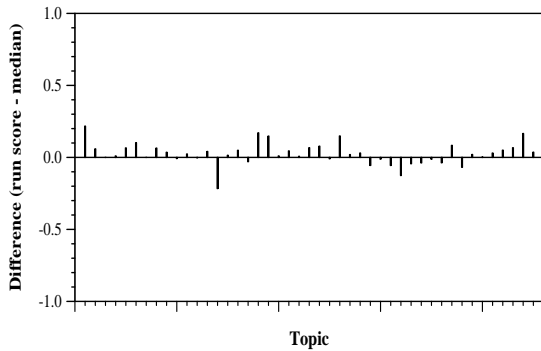
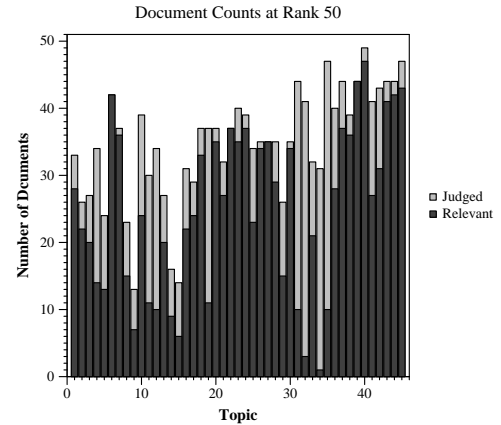
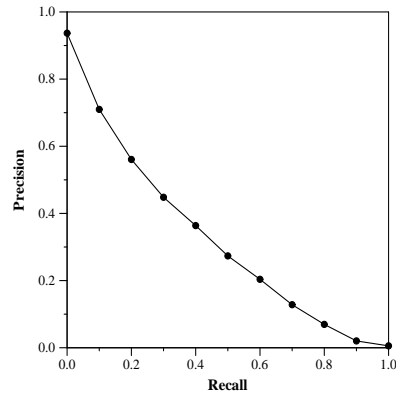
Run Description

The index is built from the combined title and abstract fields of the metadata file. Retrieval is performed by the SPUD model (Cummins et al., A poly urn document language model for improved information retrieval. ACM TOIS 33, 4, Article 21 (2015), p.1-34.), on long queries consisting of the combined Query, Question and Narrative. Passage-based retrieval with pseudo-relevance feedback is employed.

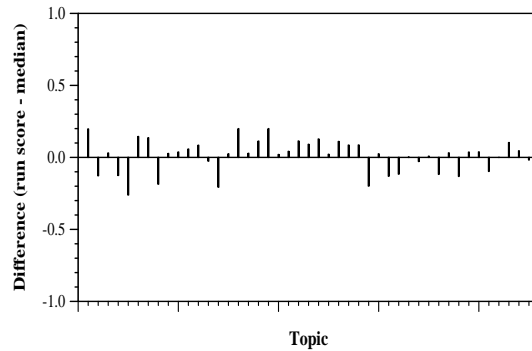
Summary Statistics	
Run ID	HKPU-SPUD-pPRF
Topic type	automatic
Contributed to judgment sets?	no

Overall measures	
Number of topics	45
Total number retrieved	44983
Total relevant	5824
Total relevant retrieved	3834
MAP	0.3140
Mean Bpref	0.5429
Mean NDCG@20	0.6389
Mean RBP(p=0.5)	0.7558 +0.0158

Document Level Averages	
	Precision
At 5 docs	0.7689
At 10 docs	0.7200
At 15 docs	0.6933
At 20 docs	0.6589
At 30 docs	0.5881
R-Precision	
Exact	0.3531



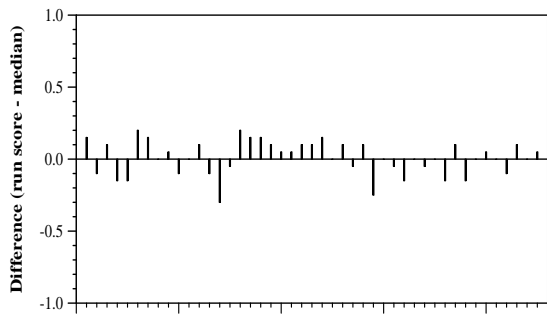
Per-topic difference from median bpref for all Round 4 runs



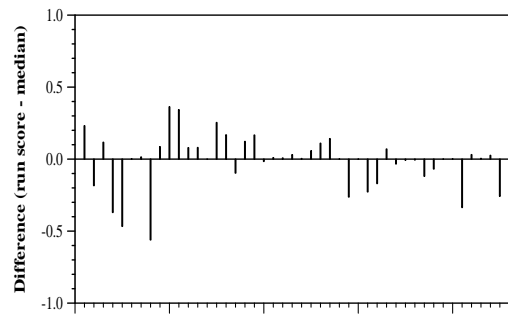
Per-topic difference from median NDCG@20 for all Round 4 runs

Round 4 results — Run HKPU-SPUD-pPRF submitted from HKPU

---



Topic  
Per-topic difference from median P@20 for all Round 4 runs



Topic  
Per-topic difference from median RBP(p=0.5) for all Round 4 runs