

Round 4 results — Run HKPU-MATF-pPRF submitted from HKPU

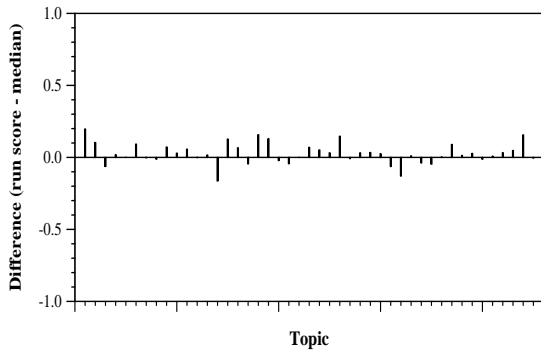
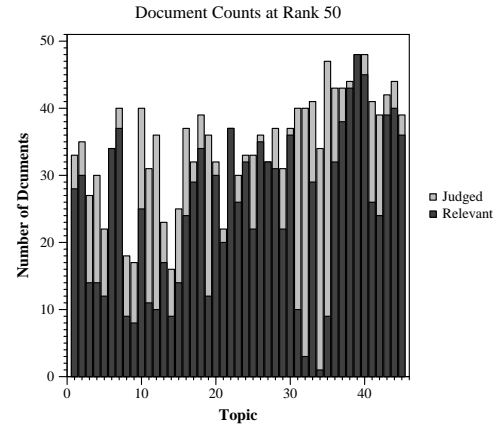
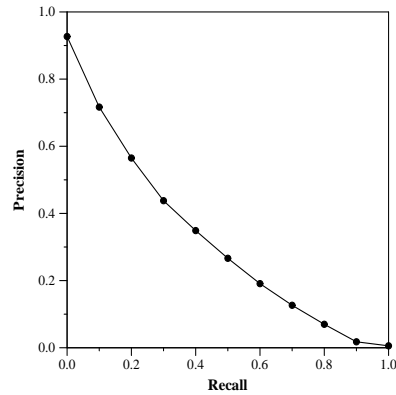
Run Description

The index is built from the combined title and abstract fields of the metadata file. Retrieval is performed by the MATF model (Paik, J.H., A novel tf-idf weighting scheme for effective ranking. In Proceedings of the ACM SIGIR (2013), pp. 343-352), on long queries consisting of the combined Query, Question and Narrative. Passage-based retrieval with pseudo-relevance feedback is employed.

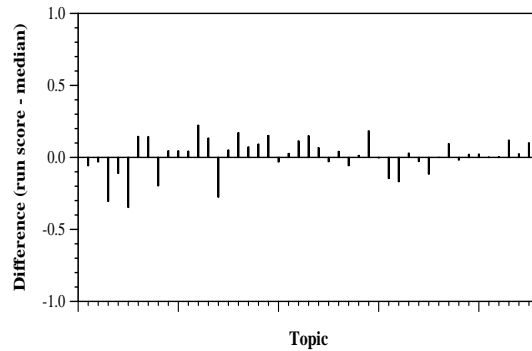
Summary Statistics	
Run ID	HKPU-MATF-pPRF
Topic type	automatic
Contributed to judgment sets?	yes

Overall measures	
Number of topics	45
Total number retrieved	44981
Total relevant	5824
Total relevant retrieved	3818
MAP	0.3125
Mean Bpref	0.5438
Mean NDCG@20	0.6370
Mean RBP(p=0.5)	0.7670 +0.0005

Document Level Averages	
	Precision
At 5 docs	0.8178
At 10 docs	0.7622
At 15 docs	0.6978
At 20 docs	0.6533
At 30 docs	0.5859
R-Precision	
Exact	0.3466

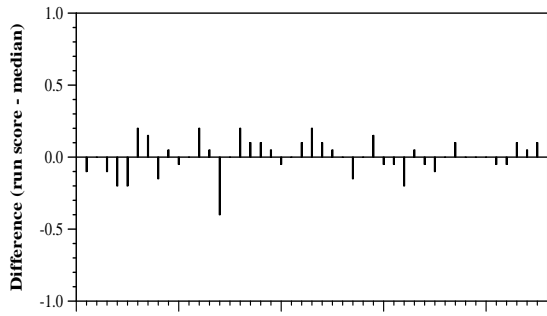


Per-topic difference from median bpref for all Round 4 runs

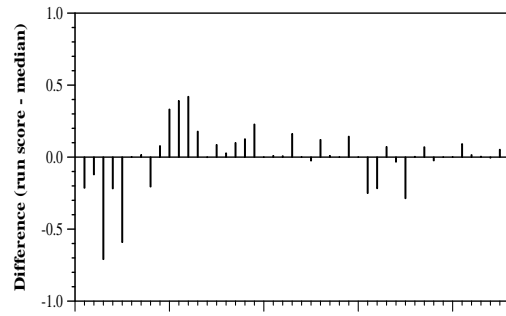


Per-topic difference from median NDCG@20 for all Round 4 runs

Round 4 results — Run HKPU-MATF-pPRF submitted from HKPU



Per-topic difference from median P@20 for all Round 4 runs



Per-topic difference from median RBP(p=0.5) for all Round 4 runs