

Round 3 results — Run ucd_cs_r2 submitted from UCD_CS

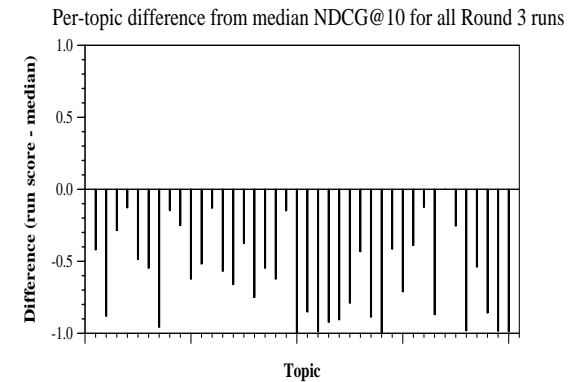
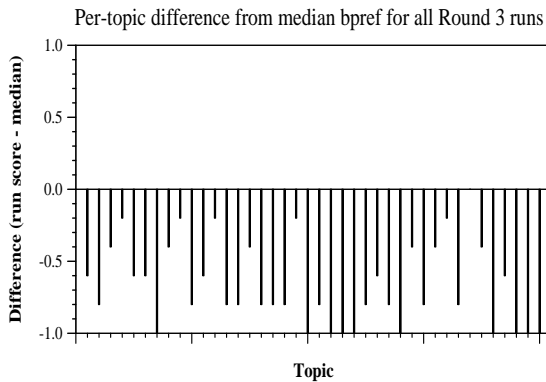
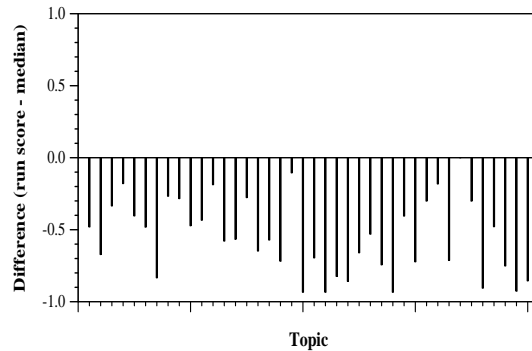
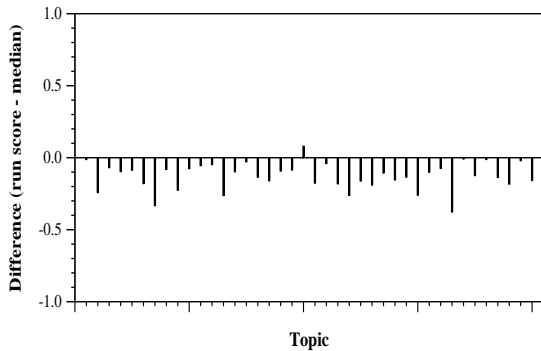
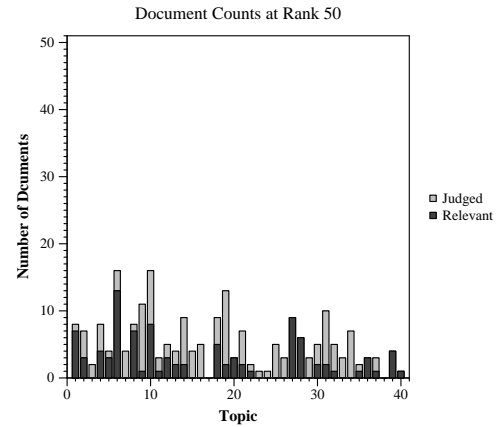
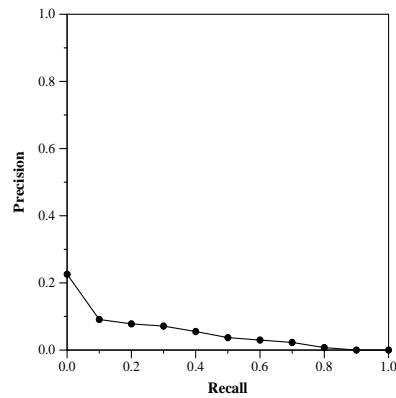
Run Description

BM25 baseline with parameters setup from previous study. Re-ranked by a fine-tuned ELECTRA-base on MSMACRO.

Summary Statistics	
Run ID	ucd_cs_r2
Topic type	automatic
Contributed to judgment sets?	no

Overall measures	
Number of topics	40
Total number retrieved	33220
Total relevant	4698
Total relevant retrieved	2280
MAP	0.0386
Mean Bpref	0.3373
Mean NDCG@10	0.0398
Mean RBP(p=0.5)	0.0507 +0.8231

Document Level Averages	
	Precision
At 5 docs	0.0500
At 10 docs	0.0475
At 15 docs	0.0483
At 20 docs	0.0500
At 30 docs	0.0458
R-Precision	
Exact	0.0532



Per-topic difference from median P@5 for all Round 3 runs

Per-topic difference from median RBP(p=0.5) for all Round 3 runs