

Round 3 results — Run sab20.3.metadocs_m submitted from sabir

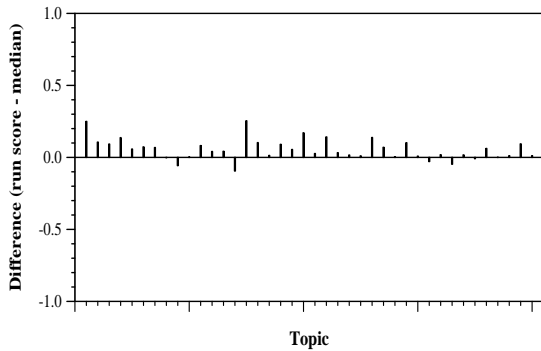
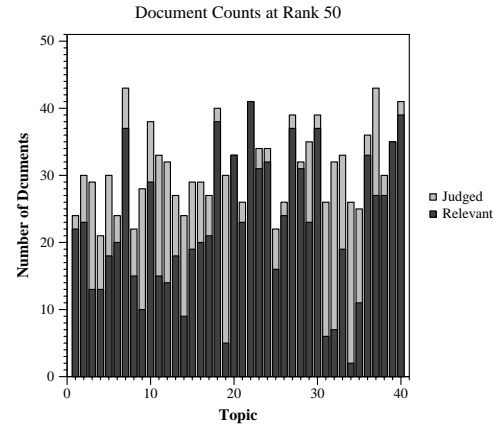
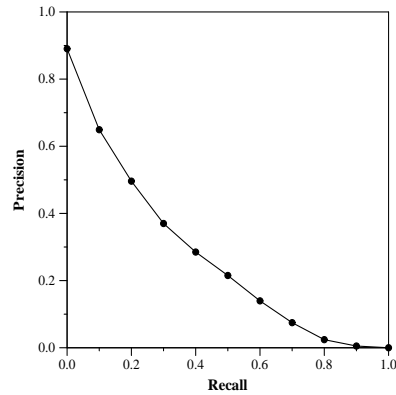
Run Description

Standard SMART vector run based on Lnu docs, ltu query weighting. Doc indexing: if only metadata info exists for a docid, that is used with Lnu weights. Each JSON doc is assigned final indexing as $0.5 * \text{Metadata_Lnu_vector} + 0.7 * \text{JSON_Lnu_vector}$. After inverted retrieval, the highest similarity for each cord_uid is used.

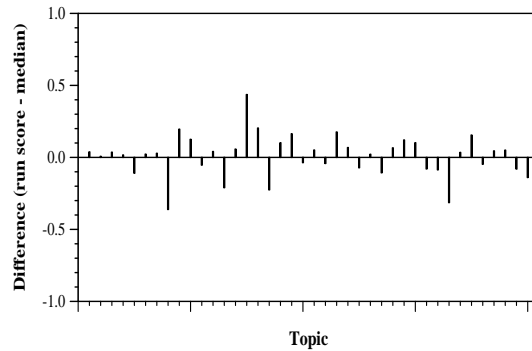
Summary Statistics	
Run ID	sab20.3.metadocs_m
Topic type	automatic
Contributed to judgment sets?	no

Overall measures	
Number of topics	40
Total number retrieved	39932
Total relevant	4698
Total relevant retrieved	3174
MAP	0.2600
Mean Bpref	0.5202
Mean NDCG@10	0.6032
Mean RBP(p=0.5)	0.6640 +0.0828

Document Level Averages	
	Precision
At 5 docs	0.6900
At 10 docs	0.6600
At 15 docs	0.6117
At 20 docs	0.5887
At 30 docs	0.5458
R-Precision	
Exact	0.3136

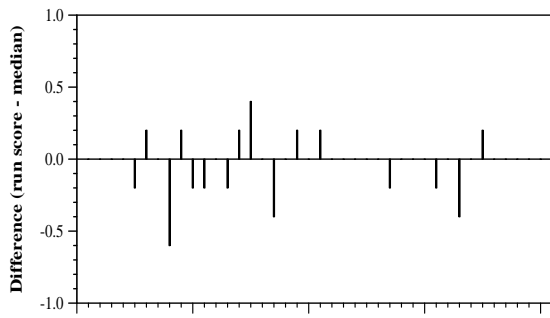


Per-topic difference from median bpref for all Round 3 runs

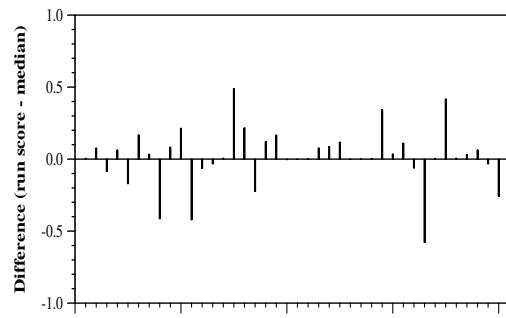


Per-topic difference from median NDCG@10 for all Round 3 runs

Round 3 results — Run sab20.3.metadocs_m submitted from sabir



Per-topic difference from median P@5 for all Round 3 runs



Per-topic difference from median RBP(p=0.5) for all Round 3 runs