

Round 3 results — Run sab20.3.dfo submitted from sabir

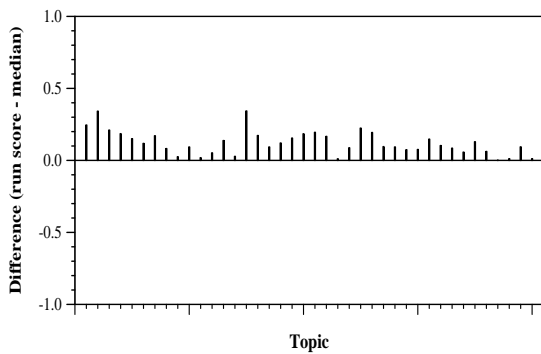
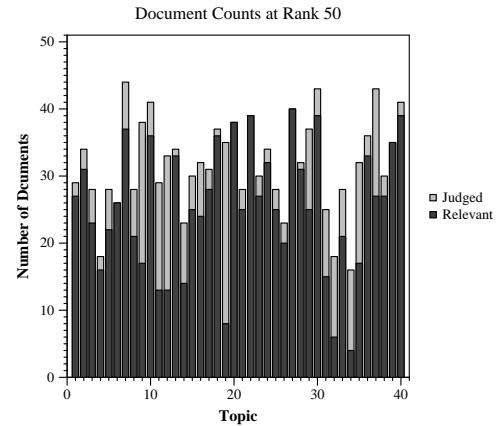
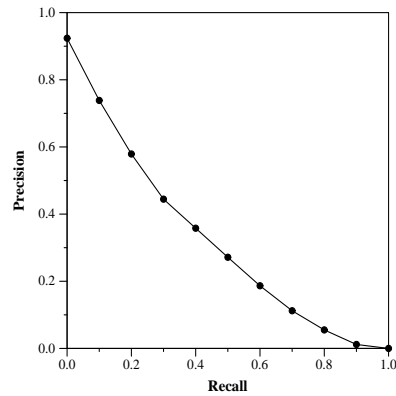
Run Description

SMART vector DFO run. Base Lnu.ltu weights, with doc indexing = 0.5 metadoc_Lnu_weighting + 0.7 JSON_Lnu_weighting if a JSON doc exists (= straight Lnu weighting if only metadata info). Run DFO algorithm (the runs are described in my TREC 2005 Routing track, and later, eg 2017 core track). Use relevance info on Rounds 1+2 collections to expand and optimize weights on that collection. This is a conservative run, expanding by only top 15 terms.

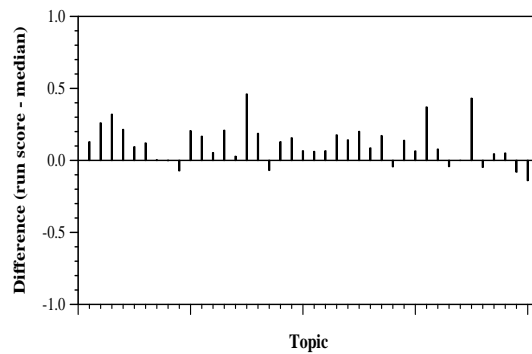
Summary Statistics	
Run ID	sab20.3.dfo
Topic type	feedback
Contributed to judgment sets?	yes

Overall measures	
Number of topics	40
Total number retrieved	39913
Total relevant	4698
Total relevant retrieved	3359
MAP	0.3147
Mean Bpref	0.5872
Mean NDCG@10	0.7029
Mean RBP(p=0.5)	0.7396 +0.0430

Document Level Averages	
	Precision
At 5 docs	0.7950
At 10 docs	0.7825
At 15 docs	0.7150
At 20 docs	0.6663
At 30 docs	0.6092
R-Precision	
Exact	0.3653

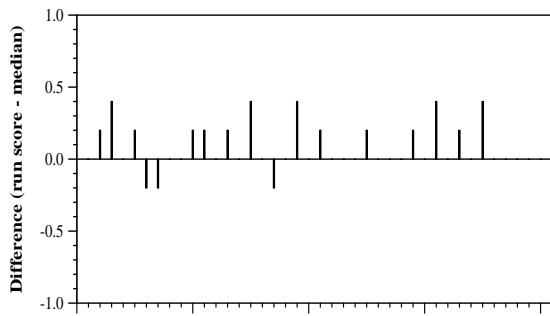


Per-topic difference from median bpref for all Round 3 runs

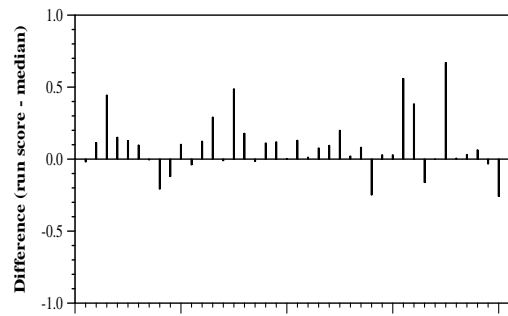


Per-topic difference from median NDCG@10 for all Round 3 runs

Round 3 results — Run sab20.3.dfo submitted from sabir



Per-topic difference from median P@5 for all Round 3 runs



Per-topic difference from median RBP(p=0.5) for all Round 3 runs