

## Round 3 results — Run mpiid5\_run2 submitted from mpiid5

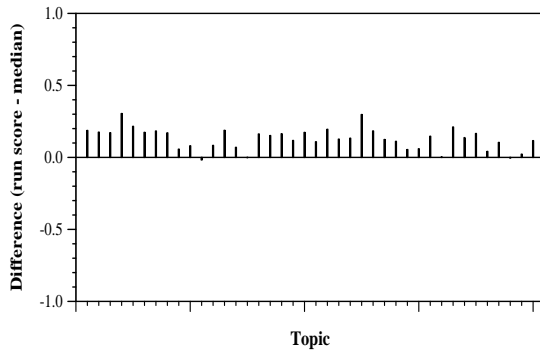
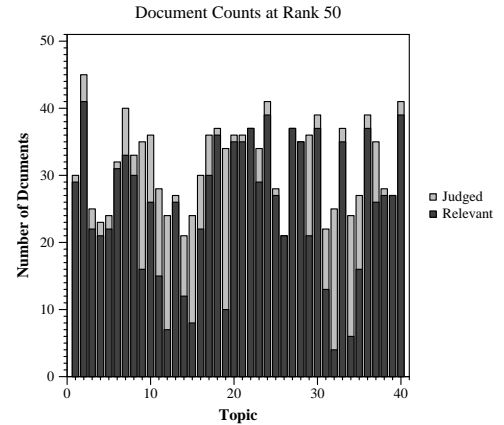
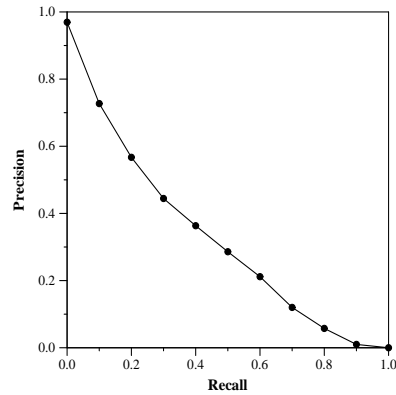
### Run Description

We re-rank top-10k documents returned by BM25 using the queries produced by UDel’s method. For the re-ranking method, we use the ELECTRA-Base model fine-tuned on the MSMARCO passage dataset. With a more complex attention mechanism, the model is later fine-tuned on the TREC COVID round 1&2 full-text collection. We use the question queries for re-ranking.

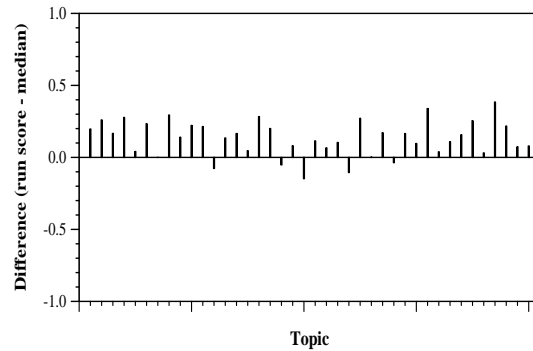
Summary Statistics	
Run ID	mpiid5_run2
Topic type	feedback
Contributed to judgment sets?	no

Overall measures	
Number of topics	40
Total number retrieved	39939
Total relevant	4698
Total relevant retrieved	3367
MAP	0.3193
Mean Bpref	0.5947
Mean NDCG@10	0.7235
Mean RBP(p=0.5)	0.7935 +0.0181

Document Level Averages	
	Precision
At 5 docs	0.8300
At 10 docs	0.7550
At 15 docs	0.7017
At 20 docs	0.6613
At 30 docs	0.6000
R-Precision	
Exact	0.3569



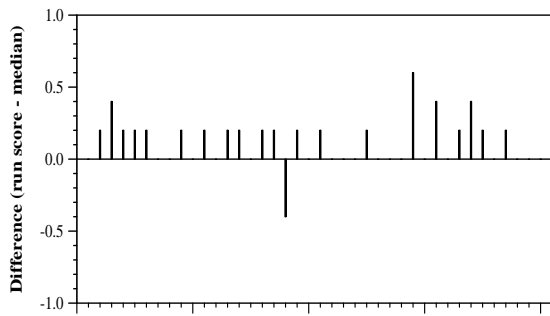
Per-topic difference from median bpref for all Round 3 runs



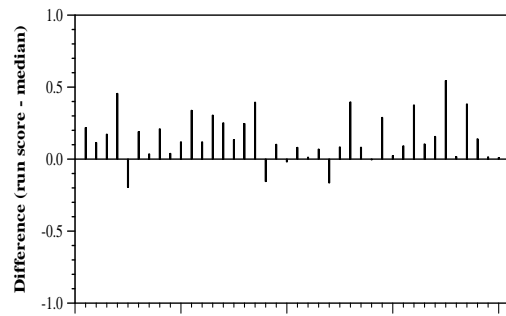
Per-topic difference from median NDCG@10 for all Round 3 runs

## Round 3 results — Run mpiid5\_run2 submitted from mpiid5

---



Per-topic difference from median P@5 for all Round 3 runs



Per-topic difference from median RBP(p=0.5) for all Round 3 runs