

Round 3 results — Run OHSU_Fusion submitted from OHSU

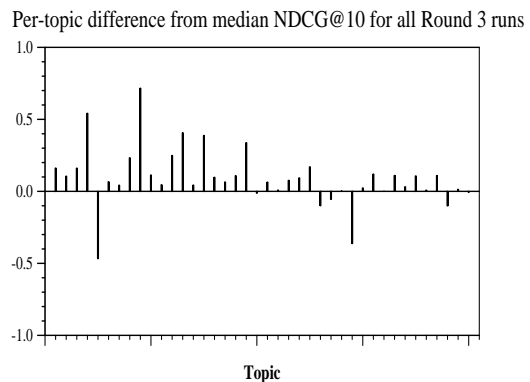
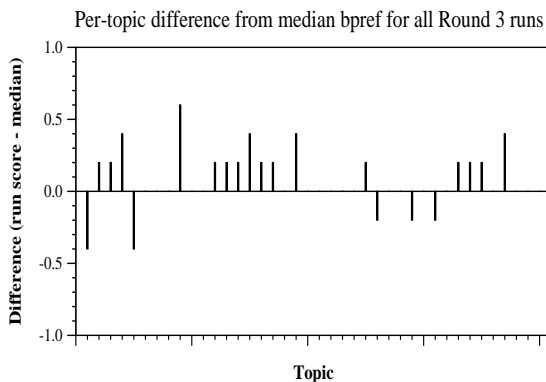
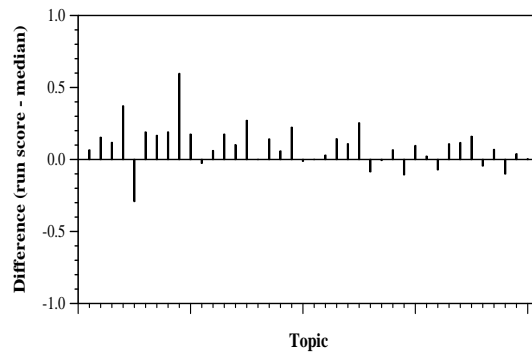
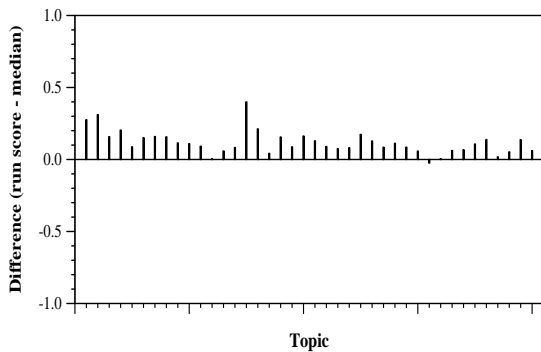
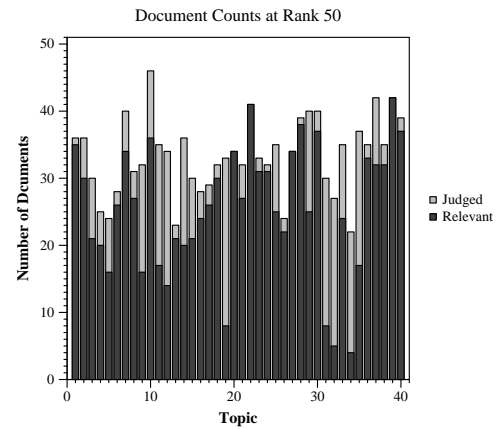
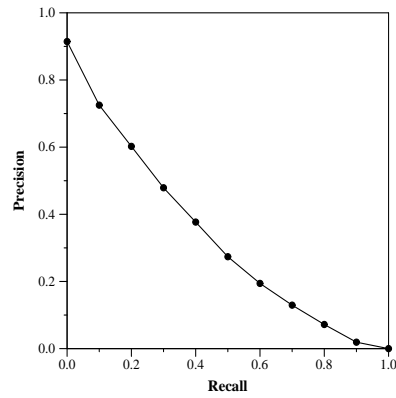
Run Description

Tokenized queries were generated using the query, question, and narrative fields for each topic. These were input into abstract, full-text, and paragraph indexes and RRF was performed to combine the 3 runs. These runs were further combined using RRF with UIowa's Round 3 baseline runs, which used Borda and Terrier.

Summary Statistics	
Run ID	OHSU_Fusion
Topic type	manual
Contributed to judgment sets?	no

Overall measures	
Number of topics	40
Total number retrieved	39911
Total relevant	4698
Total relevant retrieved	3435
MAP	0.3244
Mean Bpref	0.5828
Mean NDCG@10	0.6816
Mean RBP(p=0.5)	0.7420 +0.0441

Document Level Averages	
	Precision
At 5 docs	0.7900
At 10 docs	0.7450
At 15 docs	0.7050
At 20 docs	0.6537
At 30 docs	0.5967
R-Precision	
Exact	0.3655



Per-topic difference from median P@5 for all Round 3 runs

Per-topic difference from median RBP(p=0.5) for all Round 3 runs