

Round 2 results — Run xj4wang_run2 submitted from xj4wang

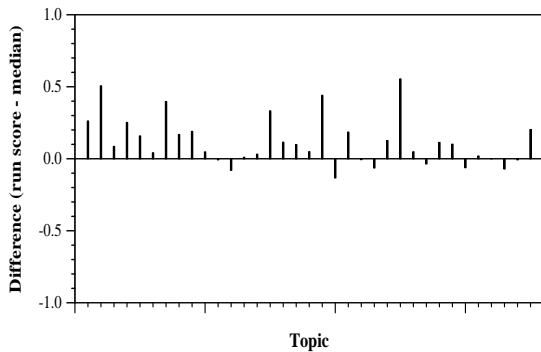
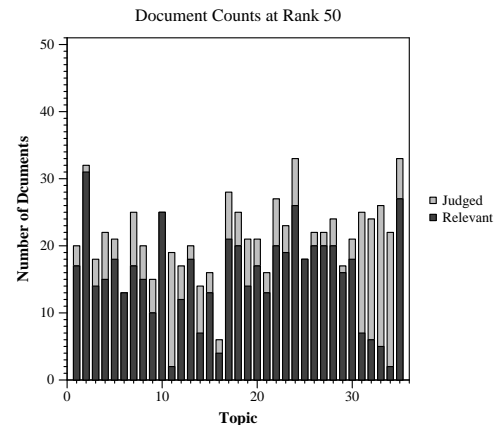
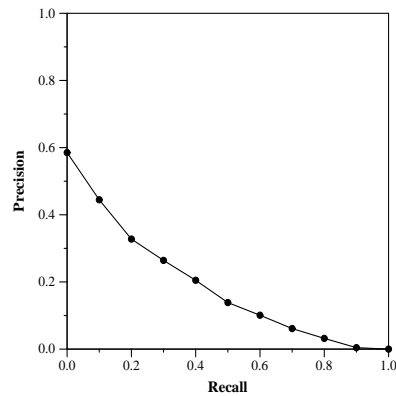
Run Description

The retrieval model used is BMI (Baseline Model Implementation), provided as a starter by Gordon Cormack for the TREC 2015/2016 Total Recall Track, with human assessors in place of the server (manual processing). [1] In more detail: It uses the CAL (Continuous Active Learning) method, starting with 1 synthetic file created using the given topics, word for word. This method is described by Grossman and Cormack in [4]. Feature vectors are created using the BMI tools. [1] SofiaML is used as the learner. The weighting scheme were chosen heavily based on the work of Cormack and Grossman in [2]. Stopping conditions for manual labeling were chosen heavily based on the work of Grossman et al. in [3]. References: [1] <https://cormack.uwaterloo.ca/trecvm/> [2] <file:///C:/Users/Jean/Downloads/2600428.2609601.pdf> [3] <https://trec.nist.gov/pubs/trec25/papers/Overview-TR.pdf> [4] https://cormack.uwaterloo.ca/caldemo/AprMay16_Edisco

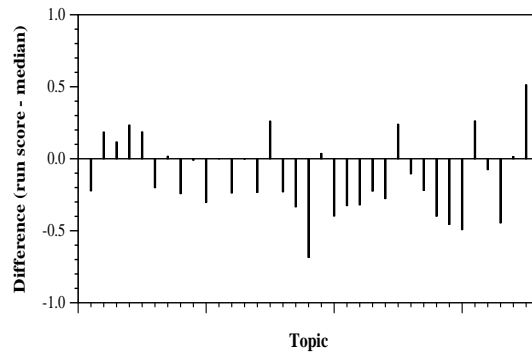
Summary Statistics	
Run ID	xj4wang_run2
Topic type	manual
Contributed to judgment sets?	no

Overall measures	
Number of topics	35
Total number retrieved	35000
Total relevant	3002
Total relevant retrieved	1780
MAP	0.1742
Mean Bpref	0.4862
Mean NDCG@10	0.3474
Mean RBP(p=0.5)	0.2464 +0.6020

Document Level Averages	
	Precision
At 5 docs	0.3543
At 10 docs	0.4400
At 15 docs	0.4267
At 20 docs	0.4043
At 30 docs	0.3629
R-Precision	
Exact	0.2533

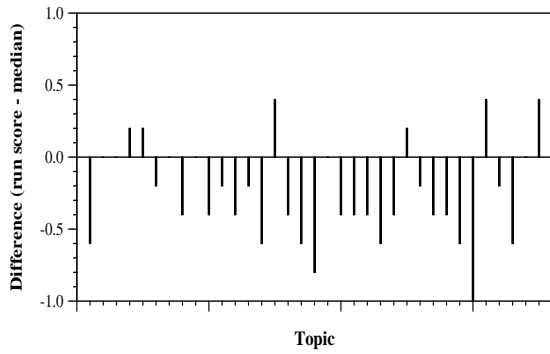


Per-topic difference from median bpref for all Round 2 runs

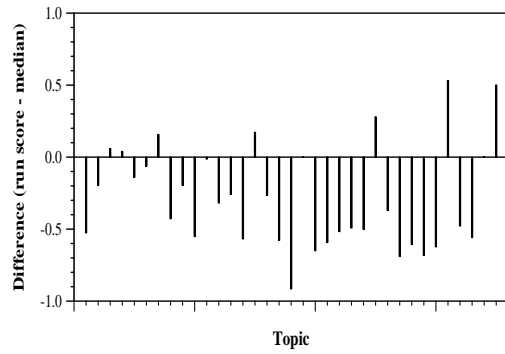


Per-topic difference from median NDCG@10 for all Round 2 runs

Round 2 results — Run xj4wang_run2 submitted from xj4wang



Per-topic difference from median P@5 for all Round 2 runs



Per-topic difference from median RBP(p=0.5) for all Round 2 runs