

Round 2 results — Run ucd_cs_r2 submitted from UCD_CS

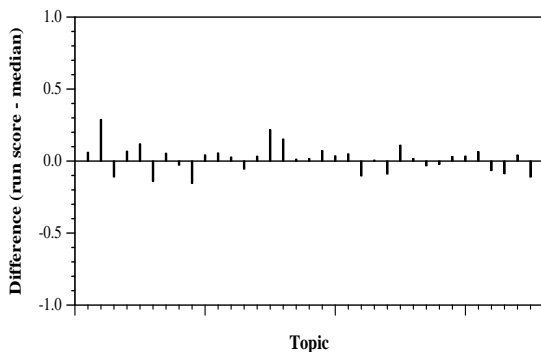
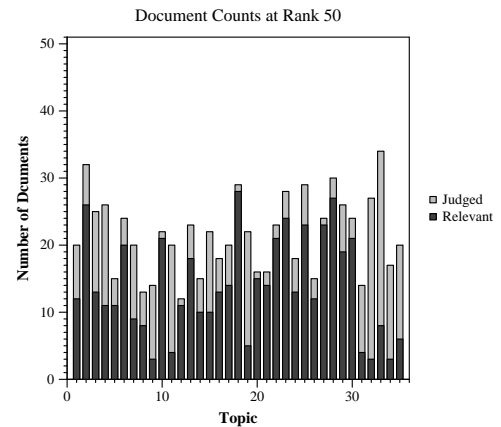
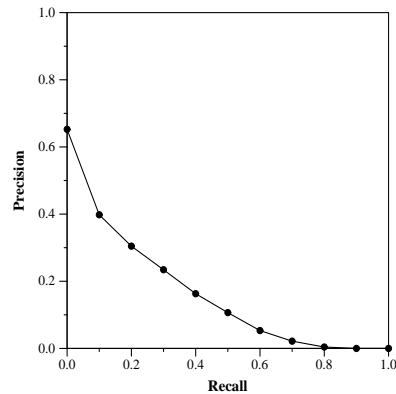
Run Description

In the first stage, we use BM25 for retrieving 1000 documents per topic with parameters set up as reported in SLEDGE [1]. At this stage, all fields of the topic are used as the query and the document index is the fulltext version from Anserini. In the next stage, the 1000 documents are re-ranked by leveraging the the fine-tuned SciBERT on qrels-rnd1. For re-ranking, all fields of the topic are concatenated to represent the query and only abstract is used as the document field. [1]: MacAvaney S, Cohan A, Goharian N. SLEDGE: A Simple Yet Effective Baseline for Coronavirus Scientific Knowledge Search. arXiv preprint arXiv:2005.02365. 2020 May 5.

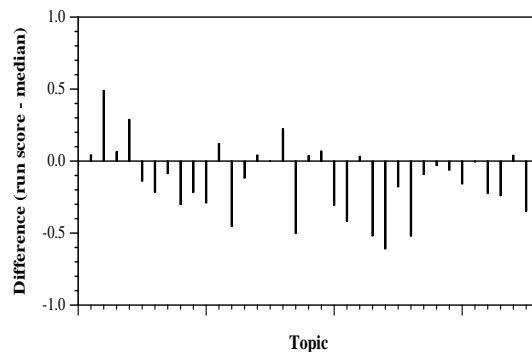
Summary Statistics	
Run ID	ucd_cs_r2
Topic type	automatic
Contributed to judgment sets?	no

Overall measures	
Number of topics	35
Total number retrieved	27269
Total relevant	3002
Total relevant retrieved	1564
MAP	0.1512
Mean Bpref	0.3877
Mean NDCG@10	0.3411
Mean RBP(p=0.5)	0.3789 +0.4099

Document Level Averages	
	Precision
At 5 docs	0.4000
At 10 docs	0.3686
At 15 docs	0.3771
At 20 docs	0.3529
At 30 docs	0.3257
R-Precision	
Exact	0.2342

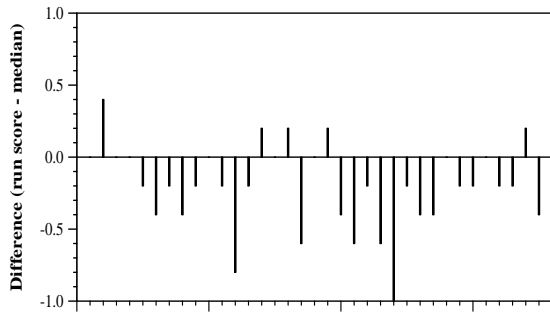


Per-topic difference from median bpref for all Round 2 runs

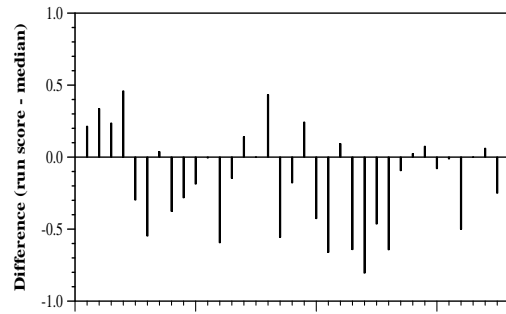


Per-topic difference from median NDCG@10 for all Round 2 runs

Round 2 results — Run ucd_cs_r2 submitted from UCD_CS



Per-topic difference from median P@5 for all Round 2 runs



Per-topic difference from median RBP(p=0.5) for all Round 2 runs