

**Round 2 results — Run sab20.2.dfo.metadocs submitted from sabir**

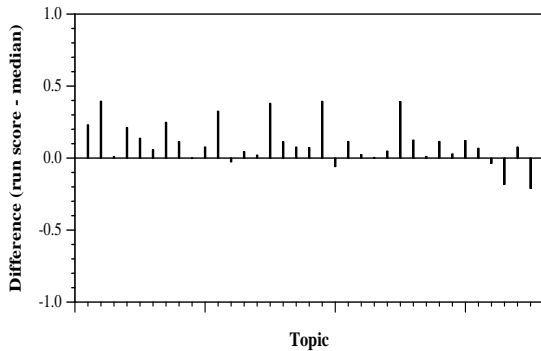
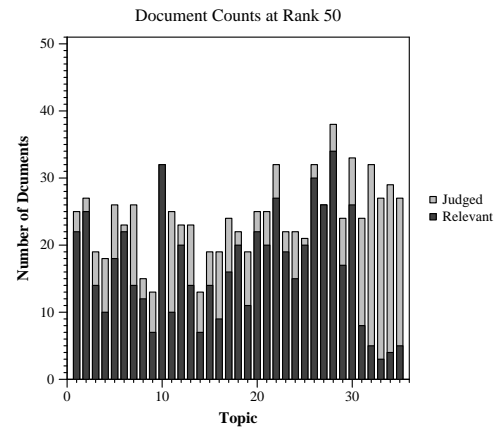
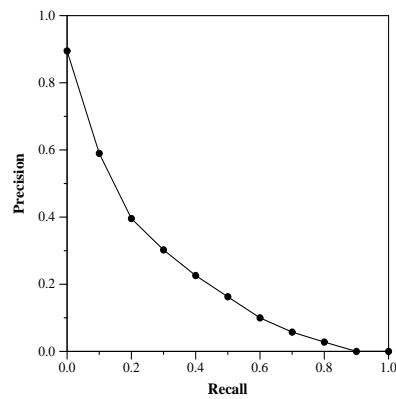
**Run Description**

SMART vector DFO run. Base Lnu.ltu weights. Run DFO algorithm (the runs and same parameters described in my TREC 2005 Routing track, and later, eg 2017 core track). Use relevance info on Round 1 collection to expand and optimize weights on that collection (using only metadata documents), and then run exactly that query (with same dictionary) on the Round2 collection. This run on Round 2 used separate Lnu weighted inverted files for metadata and JSON docs. Score = 1.2 \* metadata + JSON. Used full narrative and ltu weights for the new topics in Round 2.

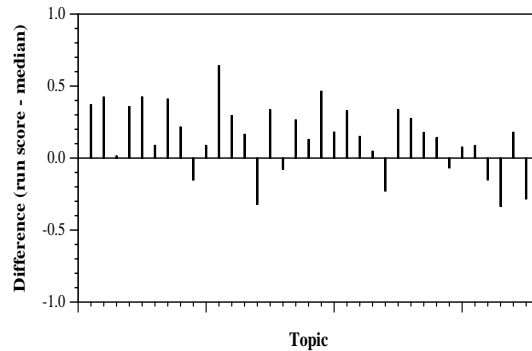
Summary Statistics	
Run ID	sab20.2.dfo.metadocs
Topic type	feedback
Contributed to judgment sets?	yes

Overall measures	
Number of topics	35
Total number retrieved	32165
Total relevant	3002
Total relevant retrieved	1817
MAP	0.2269
Mean Bpref	0.4704
Mean NDCG@10	0.6161
Mean RBP(p=0.5)	0.6746 +0.0023

Document Level Averages	
	Precision
At 5 docs	0.7086
At 10 docs	0.6600
At 15 docs	0.5695
At 20 docs	0.5100
At 30 docs	0.4229
R-Precision	
Exact	0.2784



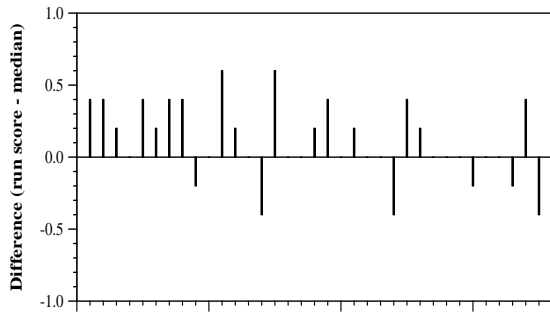
Per-topic difference from median bpref for all Round 2 runs



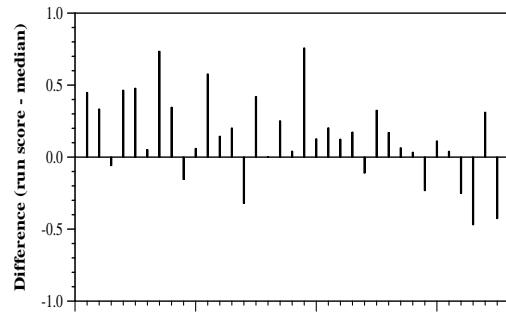
Per-topic difference from median NDCG@10 for all Round 2 runs

Round 2 results — Run sab20.2.dfo.metadocs submitted from sabir

---



Per-topic difference from median P@5 for all Round 2 runs



Per-topic difference from median RBP(p=0.5) for all Round 2 runs