

Round 2 results — Run sab20.2.dfo.meta submitted from sabir

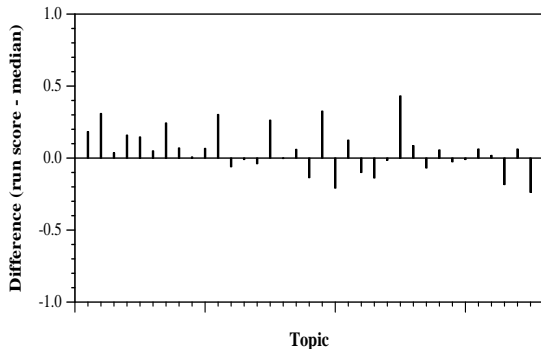
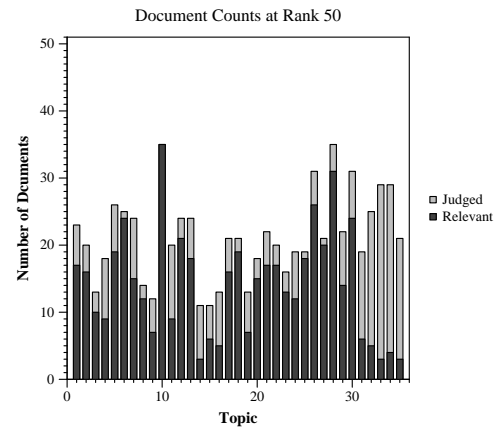
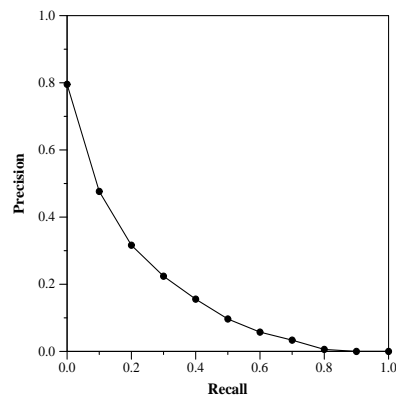
Run Description

SMART vector DFO run. Base Lnu.ltu weights. Run DFO algorithm (the runs and same parameters described in my TREC 2005 Routing track, and later, eg 2017 core track). Use relevance info on Round 1 collection to expand and optimize weights on that collection (using only metadata documents), and then run exactly that query (with same dictionary) on the Round2 collection. This run on Round 2 used only the Lnu weighted inverted files for metadata (ignored all JSON docs). Used full narrative and ltu weights for the new topics in Round 2.

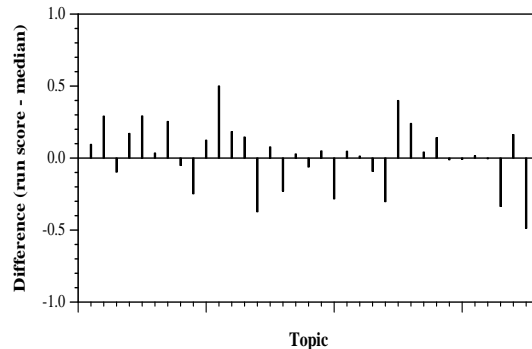
Summary Statistics	
Run ID	sab20.2.dfo.meta
Topic type	feedback
Contributed to judgment sets?	no

Overall measures	
Number of topics	35
Total number retrieved	32297
Total relevant	3002
Total relevant retrieved	1617
MAP	0.1677
Mean Bpref	0.4226
Mean NDCG@10	0.4927
Mean RBP(p=0.5)	0.5530 +0.1394

Document Level Averages	
	Precision
At 5 docs	0.5657
At 10 docs	0.5086
At 15 docs	0.4476
At 20 docs	0.4057
At 30 docs	0.3600
R-Precision	
Exact	0.2219

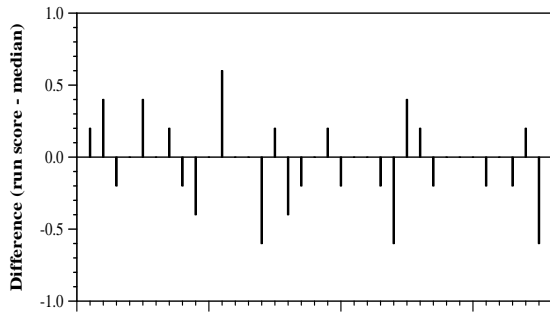


Per-topic difference from median bpref for all Round 2 runs

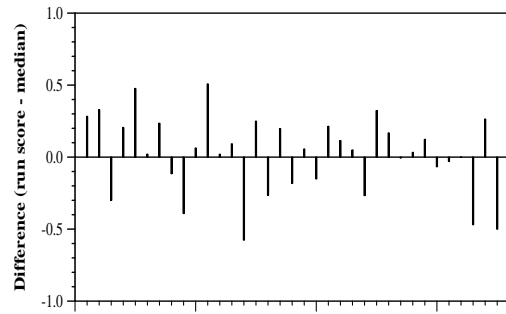


Per-topic difference from median NDCG@10 for all Round 2 runs

Round 2 results — Run sab20.2.dfo.meta submitted from sabir



Per-topic difference from median P@5 for all Round 2 runs



Per-topic difference from median RBP(p=0.5) for all Round 2 runs