

Round 2 results — Run ru-tw-exp-rnd2 submitted from RUIR

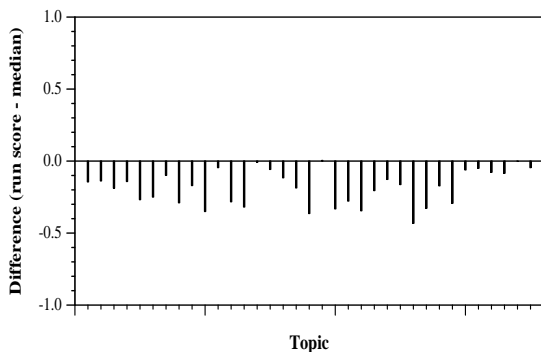
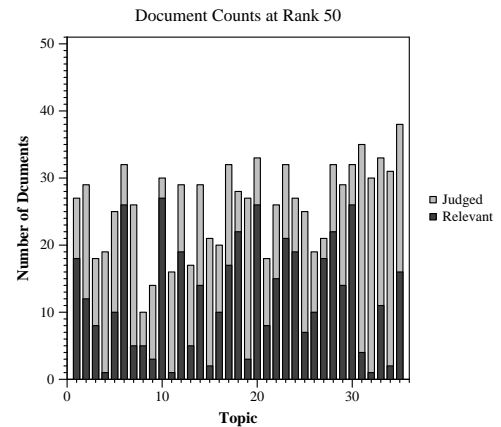
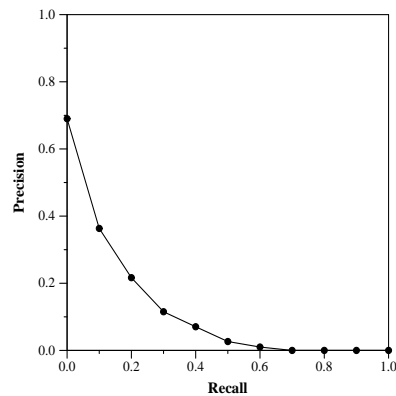
Run Description

Anserini bm25 (title+abstract+paragraph index) using query expansion based on Kaggle task descriptions. TREC topics were manually classified into Kaggle tasks. All relevant documents associated with a topic in a given task was associated with that task. Based on TF-IDF (with paper abstracts as corpus) we selected n=50 keywords that characterized this task. Words that occurred in more than 3 tasks were removed as stopwords, leaving a much smaller set of terms with tf-idf score. Query terms were weighted as $a * \text{topic_query} + (1-a) * \text{task_terms}$ $a=.8$ was selected because we use it in our run ruir-t-exp-rnd2. The task terms were normalized to add to 1-a based on their tf-idf scores

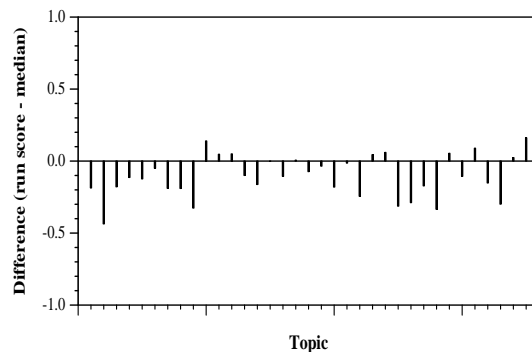
Summary Statistics	
Run ID	ru-tw-exp-rnd2
Topic type	manual
Contributed to judgment sets?	no

Overall measures	
Number of topics	35
Total number retrieved	3500
Total relevant	3002
Total relevant retrieved	611
MAP	0.1053
Mean Bpref	0.1876
Mean NDCG@10	0.3666
Mean RBP(p=0.5)	0.4066 +0.0573

Document Level Averages	
	Precision
At 5 docs	0.4800
At 10 docs	0.4229
At 15 docs	0.3810
At 20 docs	0.3571
At 30 docs	0.3086
R-Precision	
Exact	0.1861

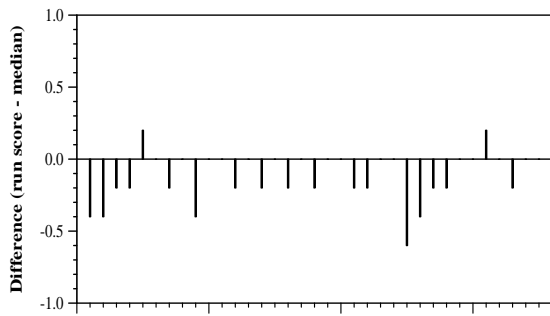


Per-topic difference from median bpref for all Round 2 runs

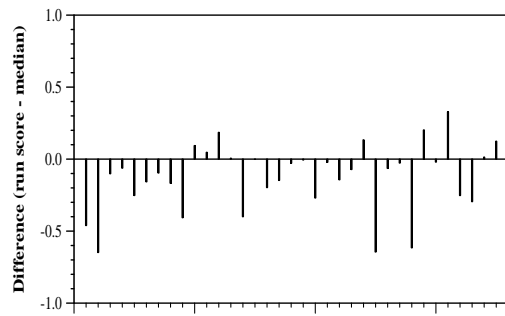


Per-topic difference from median NDCG@10 for all Round 2 runs

Round 2 results — Run ru-tw-exp-rnd2 submitted from RUIR



Topic
Per-topic difference from median P@5 for all Round 2 runs



Topic
Per-topic difference from median RBP(p=0.5) for all Round 2 runs