

Round 2 results — Run ru-tn-exp-rnd2 submitted from RUIR

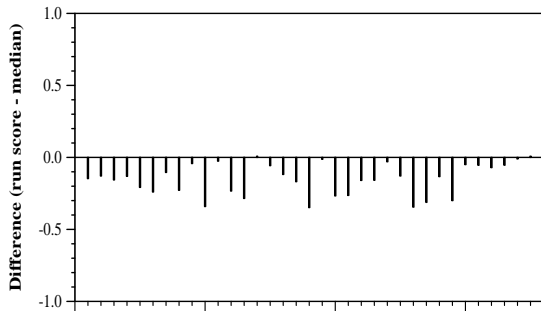
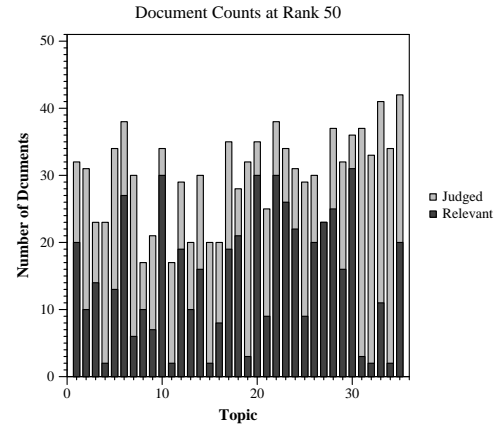
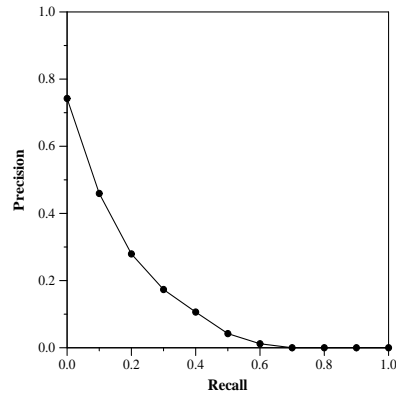
Run Description

Anserini bm25 (title+abstract+paragraph index) using query expansion based on Kaggle task descriptions. TREC topics were manually classified into Kaggle tasks, and the top 10 keywords of the task were extracted based on TF-IDF (using paper abstracts as a corpus). Query terms were weighted as $.6 * \text{topic_query} + .25 * \text{topic_narrative} + .15 \text{ task_description}$

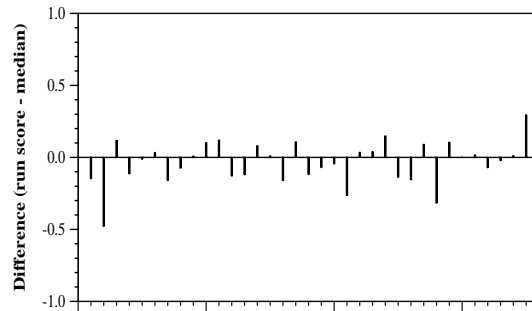
Summary Statistics	
Run ID	ru-tn-exp-rnd2
Topic type	manual
Contributed to judgment sets?	yes

Overall measures	
Number of topics	35
Total number retrieved	3500
Total relevant	3002
Total relevant retrieved	721
MAP	0.1404
Mean Bpref	0.2187
Mean NDCG@10	0.4358
Mean RBP(p=0.5)	0.4534 +0.0021

Document Level Averages	
	Precision
At 5 docs	0.5714
At 10 docs	0.5114
At 15 docs	0.4648
At 20 docs	0.4314
At 30 docs	0.3648
R-Precision	
Exact	0.2171

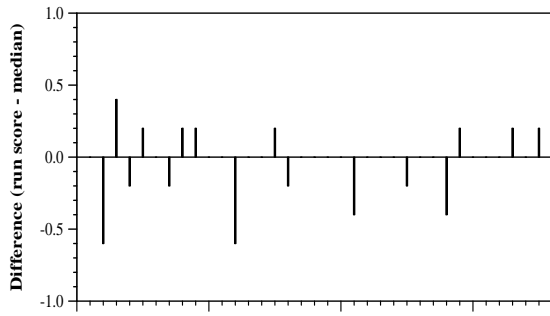


Per-topic difference from median bpref for all Round 2 runs

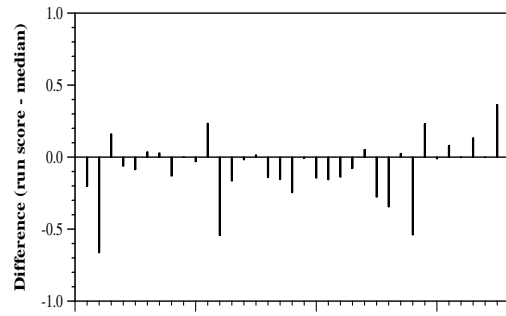


Per-topic difference from median NDCG@10 for all Round 2 runs

Round 2 results — Run ru-tn-exp-rnd2 submitted from RUIR



Per-topic difference from median P@5 for all Round 2 runs



Per-topic difference from median RBP(p=0.5) for all Round 2 runs