

Round 2 results — Run ru-t-exp-rnd2 submitted from RUIR

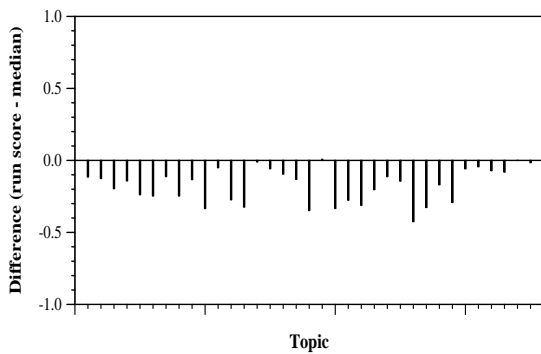
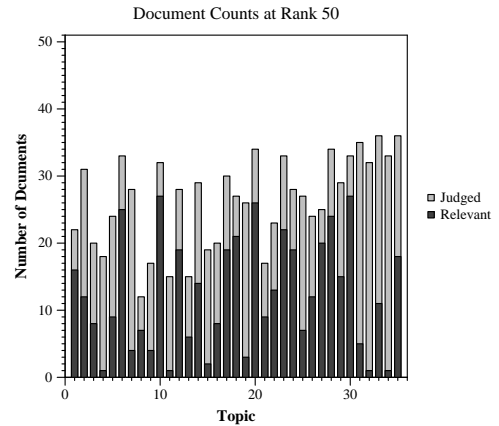
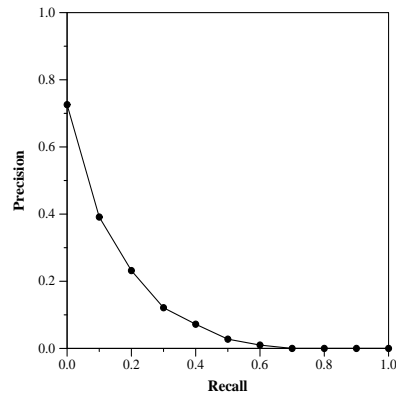
Run Description

Anserini bm25 (title+abstract+paragraph index) using query expansion based on Kaggle task descriptions. TREC topics were manually classified into Kaggle tasks, and the top 10 keywords of the task were extracted based on TF-IDF (using paper abstracts as a corpus). Query terms were weighted as $a * \text{topic_query} + (1-a) * \text{task_terms}$ i.e. the weights of the terms in the topic query add to 'a' $a=.8$ was selected by optimizing towards both high precision on known qrels and a high number of unknown qrels.

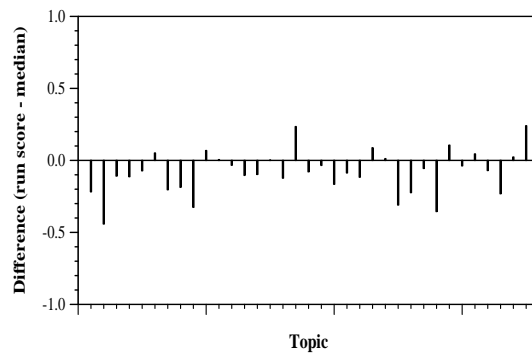
Summary Statistics	
Run ID	ru-t-exp-rnd2
Topic type	manual
Contributed to judgment sets?	no

Overall measures	
Number of topics	35
Total number retrieved	3500
Total relevant	3002
Total relevant retrieved	647
MAP	0.1117
Mean Bpref	0.1979
Mean NDCG@10	0.3887
Mean RBP(p=0.5)	0.4424 +0.0257

Document Level Averages	
	Precision
At 5 docs	0.4971
At 10 docs	0.4457
At 15 docs	0.3886
At 20 docs	0.3614
At 30 docs	0.3105
R-Precision	
Exact	0.1907

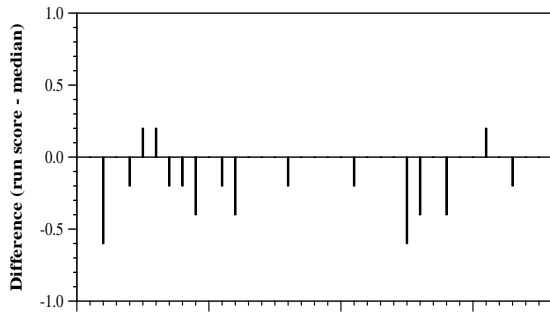


Per-topic difference from median bpref for all Round 2 runs

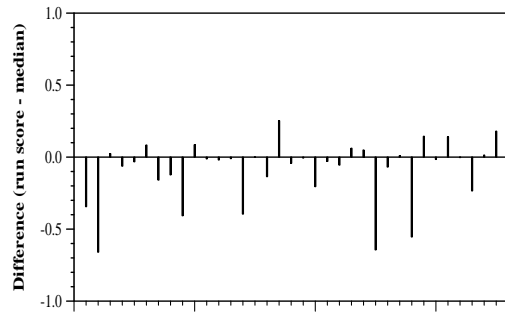


Per-topic difference from median NDCG@10 for all Round 2 runs

Round 2 results — Run ru-t-exp-rnd2 submitted from RUIR



Per-topic difference from median P@5 for all Round 2 runs



Per-topic difference from median RBP(p=0.5) for all Round 2 runs