

## Round 2 results — Run mpiid5\_run3 submitted from mpiid5

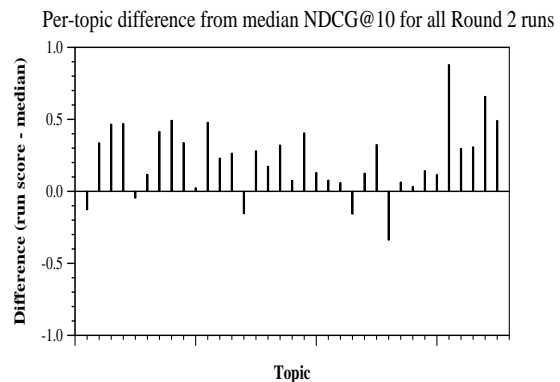
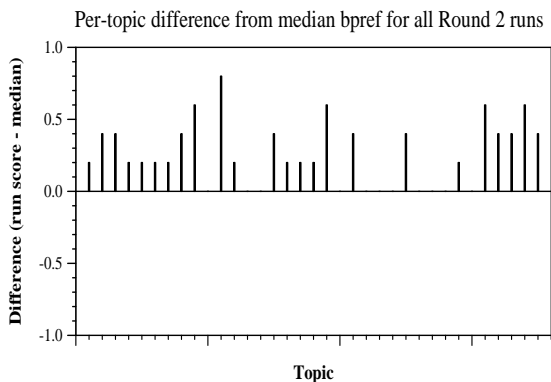
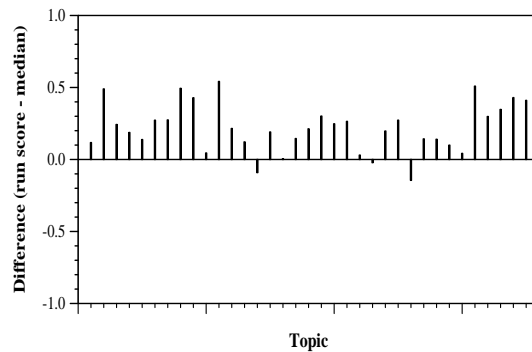
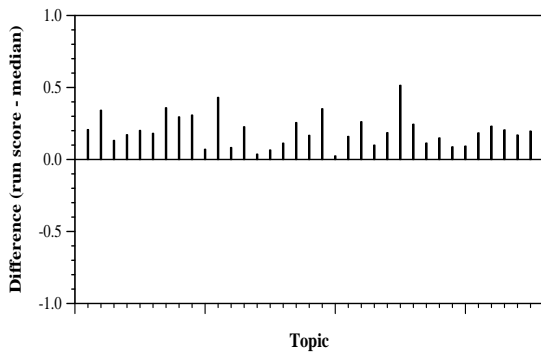
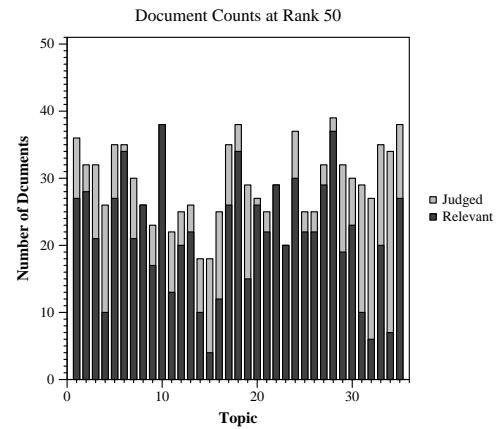
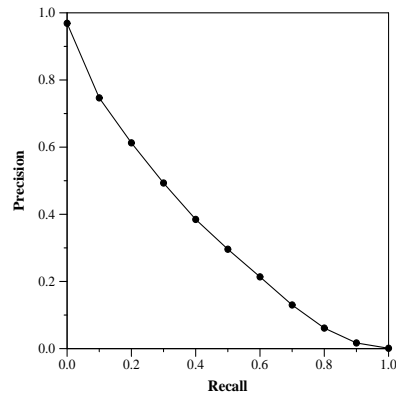
### Run Description

We re-rank top-10000 documents returned by BM25 using the queries produced by Udel’s method. For the re-ranking method, we use the ELECTRA-Base model fine-tuned on the MSMARCO passage dataset. The model is later fine-tuned on the TREC COVID round 1 full-text collection.

Summary Statistics	
Run ID	mpiid5_run3
Topic type	manual
Contributed to judgment sets?	yes

Overall measures	
Number of topics	35
Total number retrieved	35000
Total relevant	3002
Total relevant retrieved	2174
MAP	0.3380
Mean Bpref	0.5679
Mean NDCG@10	0.6893
Mean RBP(p=0.5)	0.7547 +0.0020

Document Level Averages	
	Precision
At 5 docs	0.8514
At 10 docs	0.7429
At 15 docs	0.6743
At 20 docs	0.6214
At 30 docs	0.5286
R-Precision	
Exact	0.3773



Per-topic difference from median P@5 for all Round 2 runs

Per-topic difference from median RBP(p=0.5) for all Round 2 runs