

Round 2 results — Run mpiid5_run2 submitted from mpiid5

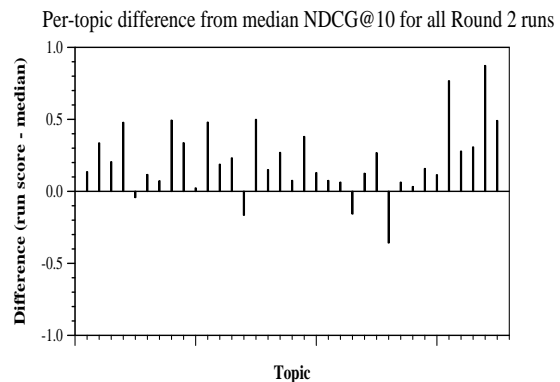
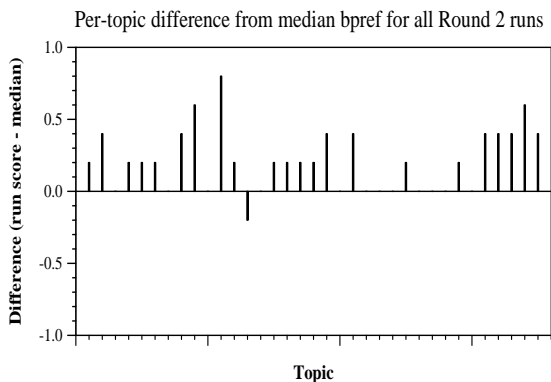
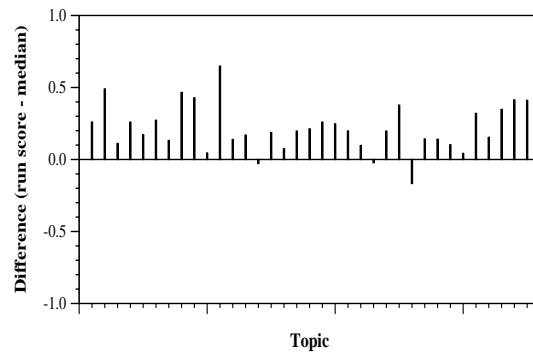
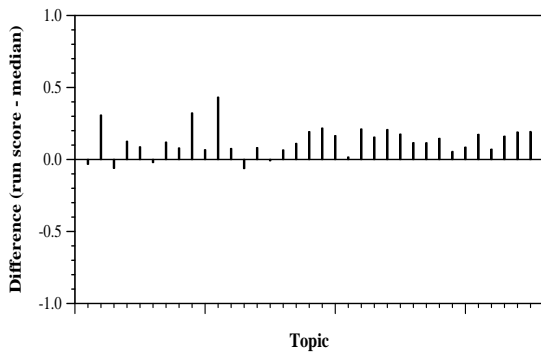
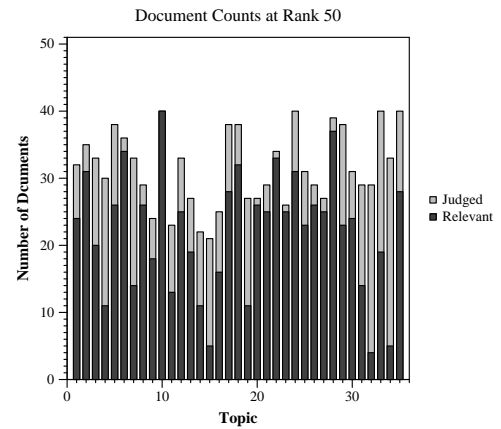
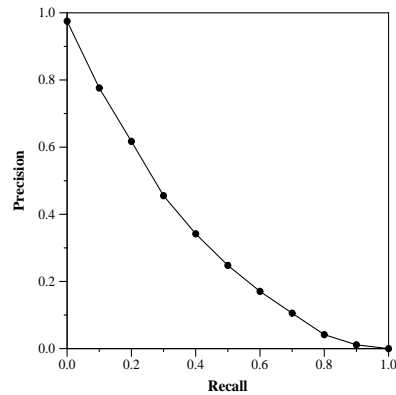
Run Description

We re-rank top-1500 documents returned by BM25 using the queries produced by Udel’s method. For the re-ranking method, we use the ELECTRA-Base model fine-tuned on the MSMARCO passage dataset. The model is later fine-tuned on the TREC COVID round 1 full-text collection.

Summary Statistics	
Run ID	mpiid5_run2
Topic type	manual
Contributed to judgment sets?	no

Overall measures	
Number of topics	35
Total number retrieved	35000
Total relevant	3002
Total relevant retrieved	1785
MAP	0.3185
Mean Bpref	0.4943
Mean NDCG@10	0.6864
Mean RBP(p=0.5)	0.7472 +0.0109

Document Level Averages	
	Precision
At 5 docs	0.8057
At 10 docs	0.7371
At 15 docs	0.6895
At 20 docs	0.6357
At 30 docs	0.5381
R-Precision	
Exact	0.3653



Per-topic difference from median P@5 for all Round 2 runs

Per-topic difference from median RBP(p=0.5) for all Round 2 runs