

Round 2 results — Run irc_bm25_altmetric submitted from IRC

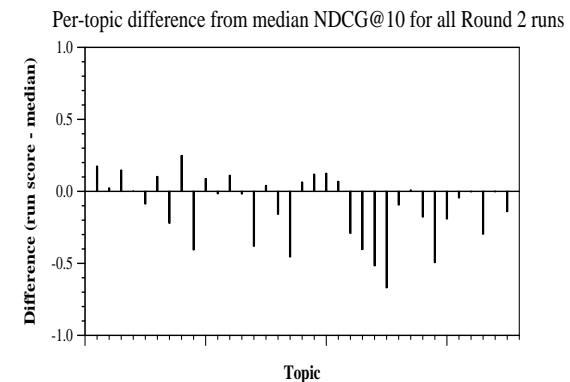
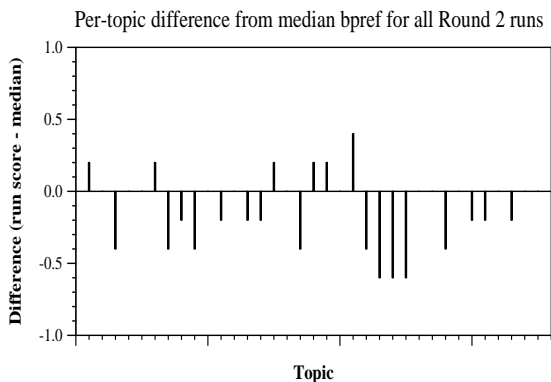
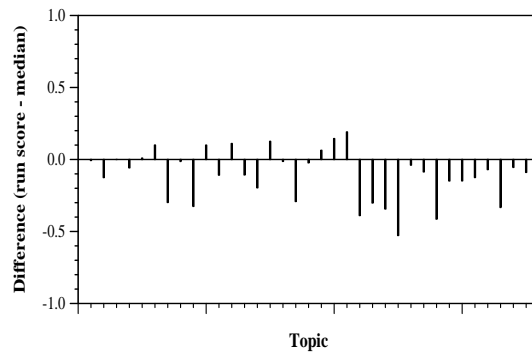
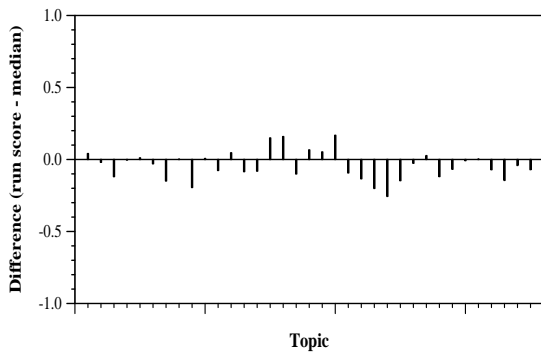
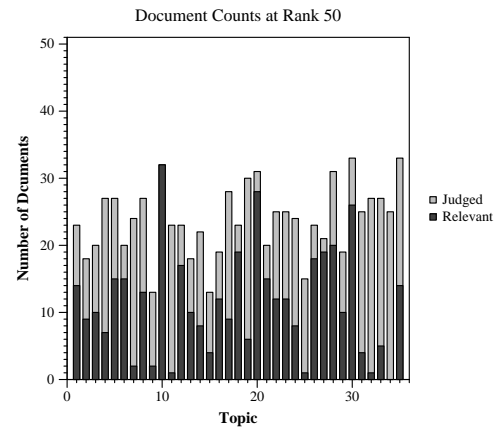
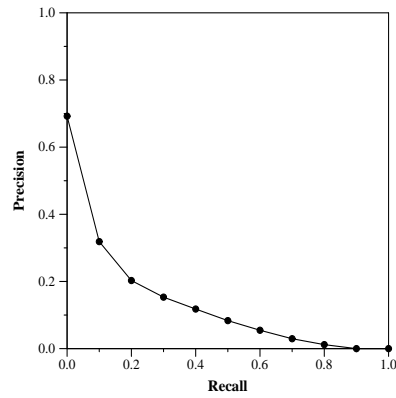
Run Description

This run submission combines a BM25 baseline with altmetrics. The baseline run is retrieved with the default ranker of Elasticsearch/Lucene (BM25) and queries using the contents of the <query>, <question>, and <narrative> tags. We rerank the baseline by adding the logarithmized Altmetric Attention Score.

Summary Statistics	
Run ID	irc_bm25_altmetric
Topic type	automatic
Contributed to judgment sets?	yes

Overall measures	
Number of topics	35
Total number retrieved	35000
Total relevant	3002
Total relevant retrieved	1604
MAP	0.1264
Mean Bpref	0.3272
Mean NDCG@10	0.3636
Mean RBP(p=0.5)	0.4260 +0.0029

Document Level Averages	
	Precision
At 5 docs	0.4800
At 10 docs	0.4143
At 15 docs	0.3657
At 20 docs	0.3257
At 30 docs	0.2829
R-Precision	
Exact	0.1810



Per-topic difference from median P@5 for all Round 2 runs

Per-topic difference from median RBP(p=0.5) for all Round 2 runs