

## Round 2 results — Run ielab-rbp-meta submitted from ielab

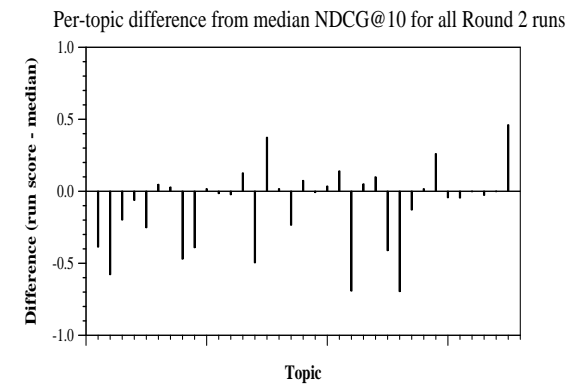
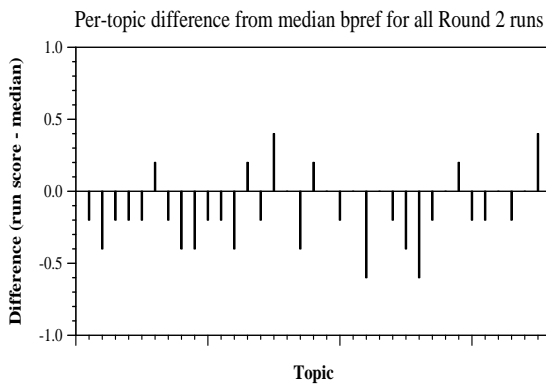
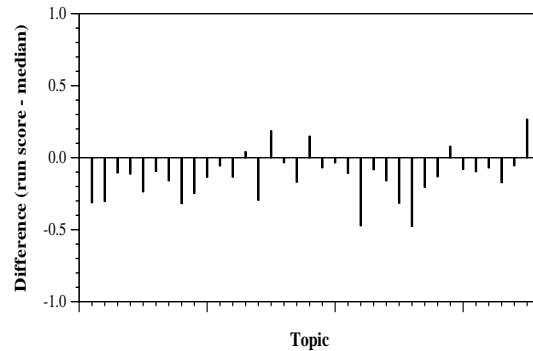
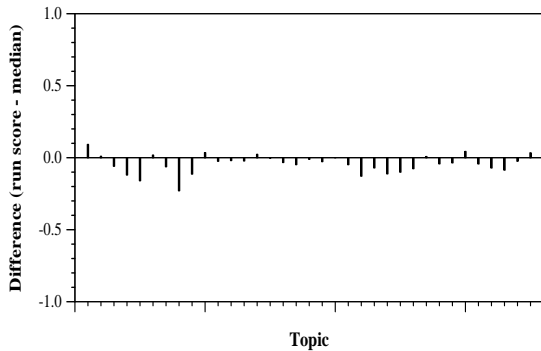
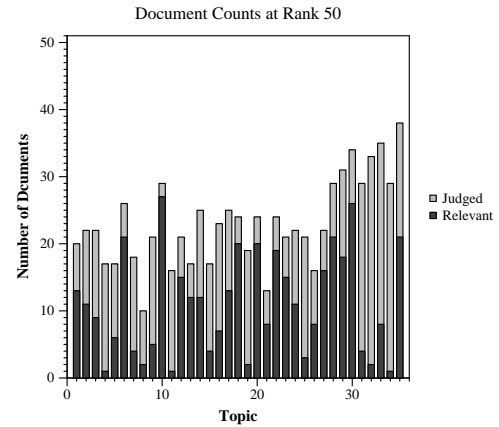
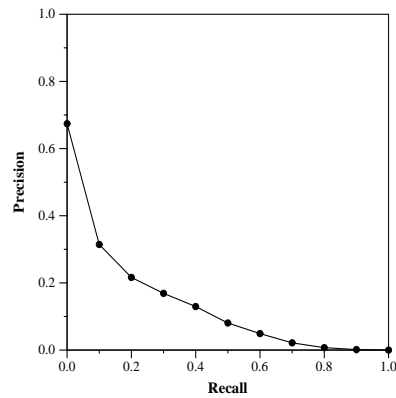
### Run Description

RBP rank fusion of the runs we submitted in Round 1 on a full-text index, in addition to several runs from APIs of search engines that support CORD: AEUB, Covidex, DISCOVID, Fatcat, Ludwig, and Vespa.

Summary Statistics	
Run ID	ielab-rbp-meta
Topic type	automatic
Contributed to judgment sets?	yes

Overall measures	
Number of topics	35
Total number retrieved	31691
Total relevant	3002
Total relevant retrieved	1616
MAP	0.1249
Mean Bpref	0.3273
Mean NDCG@10	0.3429
Mean RBP(p=0.5)	0.4354 +0.0045

Document Level Averages	
	Precision
At 5 docs	0.4629
At 10 docs	0.3600
At 15 docs	0.3086
At 20 docs	0.2786
At 30 docs	0.2533
R-Precision	
Exact	0.1846



Per-topic difference from median P@5 for all Round 2 runs

Per-topic difference from median RBP(p=0.5) for all Round 2 runs