

Round 2 results — Run cu_dbmi_sent_embed submitted from columbia_university_dbmi

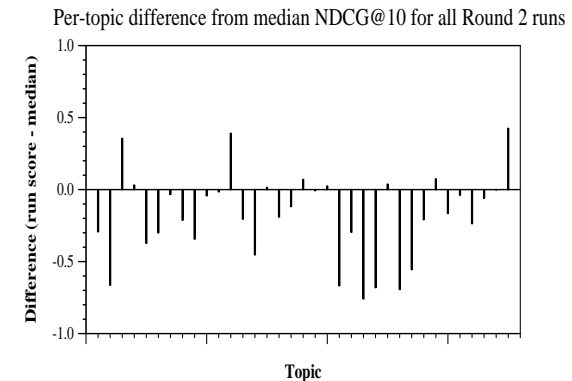
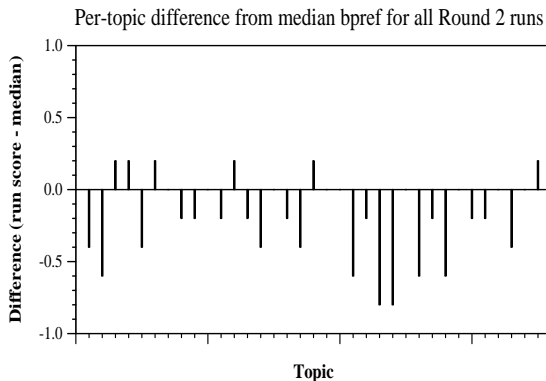
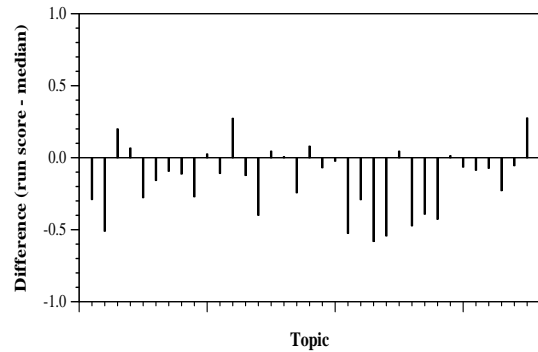
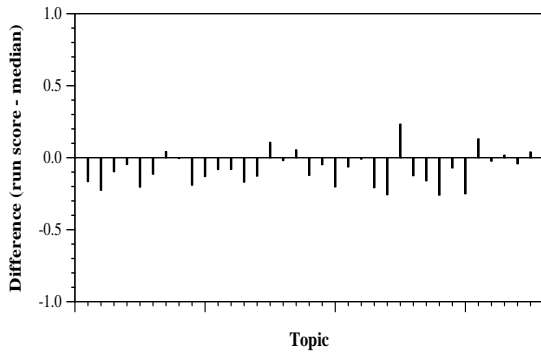
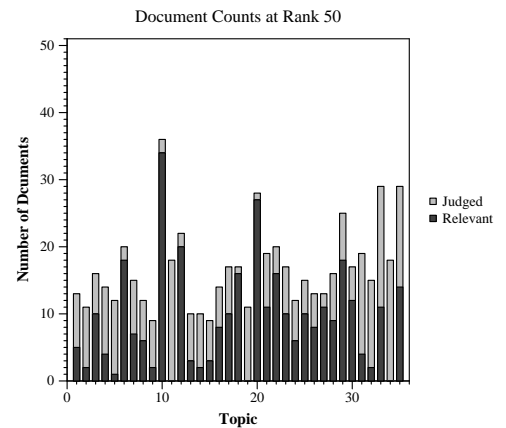
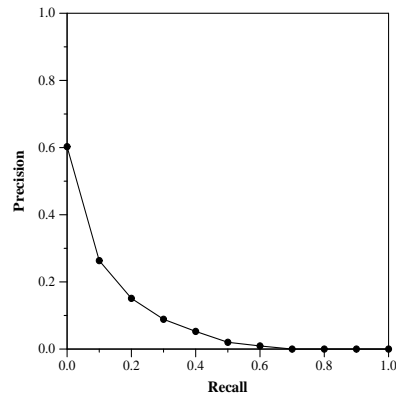
Run Description

Use cord 19 on tensorflow hub to calculate the similarities between the document and the query

Summary Statistics	
Run ID	cu_dbmi_sent_embed
Topic type	automatic
Contributed to judgment sets?	yes

Overall measures	
Number of topics	35
Total number retrieved	33382
Total relevant	3002
Total relevant retrieved	1162
MAP	0.0807
Mean Bpref	0.2882
Mean NDCG@10	0.3182
Mean RBP(p=0.5)	0.3559 +0.0048

Document Level Averages	
	Precision
At 5 docs	0.4114
At 10 docs	0.3629
At 15 docs	0.2876
At 20 docs	0.2614
At 30 docs	0.2238
R-Precision	
Exact	0.1406



Per-topic difference from median P@5 for all Round 2 runs

Per-topic difference from median RBP(p=0.5) for all Round 2 runs