

Round 2 results — Run bm25_safir_s01p_rrf submitted from ims_unipd

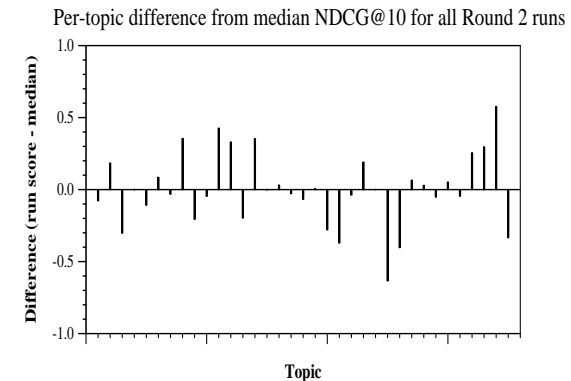
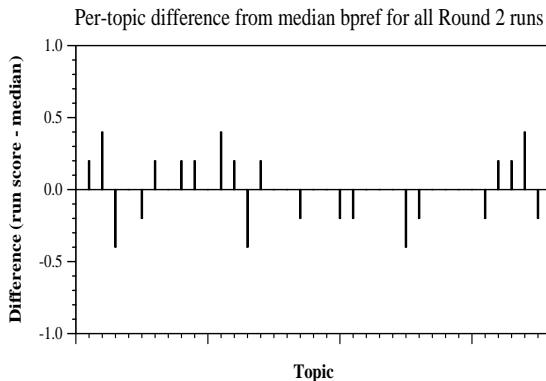
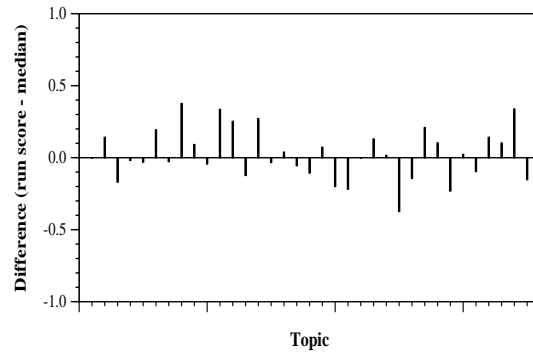
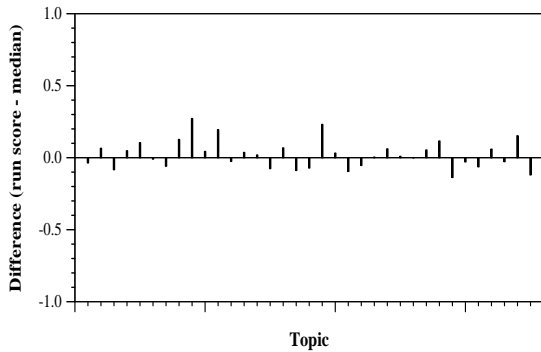
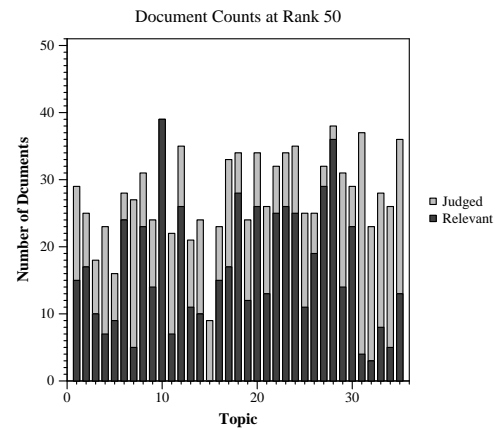
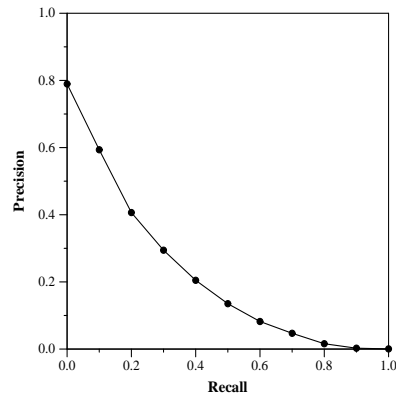
Run Description

We adopt SAFIR + RM3 and BM25 + RM3. Then we performed RRF to combine the two runs.

Summary Statistics	
Run ID	bm25_safir_s01p_rrf
Topic type	automatic
Contributed to judgment sets?	yes

Overall measures	
Number of topics	35
Total number retrieved	32045
Total relevant	3002
Total relevant retrieved	1623
MAP	0.2093
Mean Bpref	0.3910
Mean NDCG@10	0.4954
Mean RBP(p=0.5)	0.5333 +0.0019

Document Level Averages	
	Precision
At 5 docs	0.6057
At 10 docs	0.5571
At 15 docs	0.5048
At 20 docs	0.4686
At 30 docs	0.4086
R-Precision	
Exact	0.2699



Per-topic difference from median P@5 for all Round 2 runs

Per-topic difference from median RBP(p=0.5) for all Round 2 runs