

Round 2 results — Run ReInfoSelect submitted from CMT

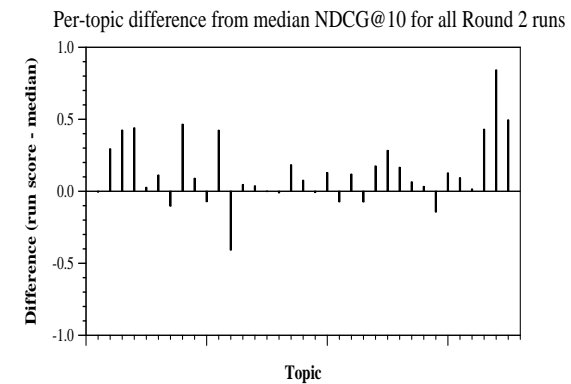
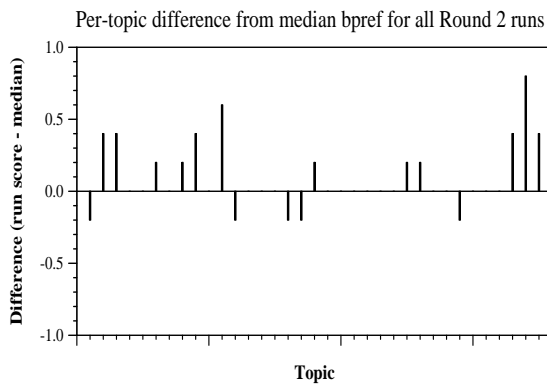
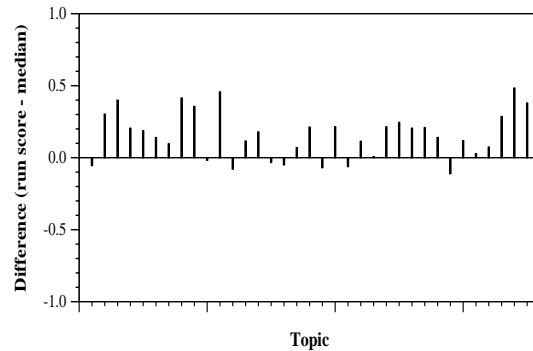
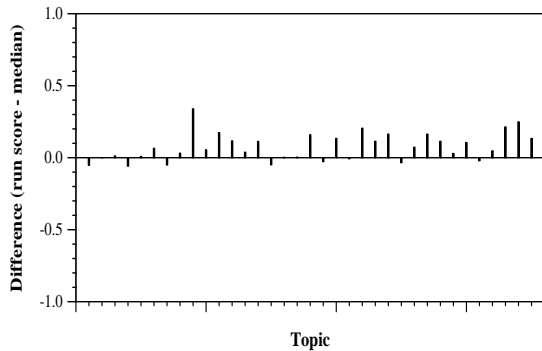
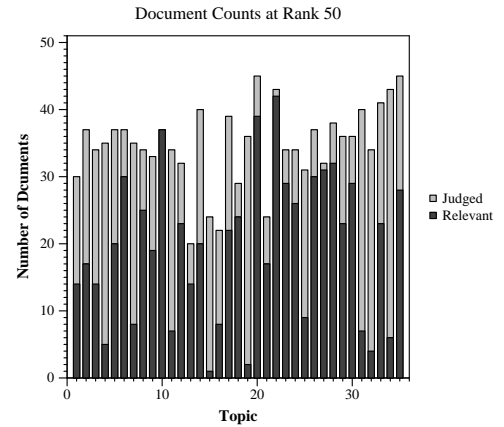
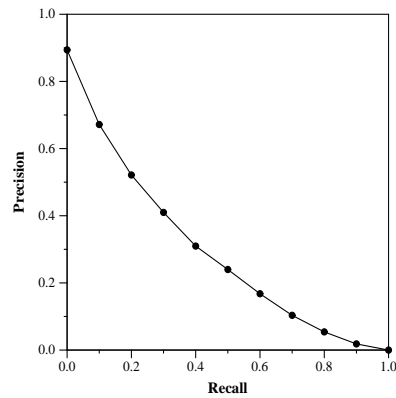
Run Description

ReInfoSelect (Med Marco with nlg large): anserini TREC-COVID R2 Retrieval #8 retrieval and ReInfoSelect few-shot SciBERT with weak supervisions from med-marco and Contrastive NLG COVID Query

Summary Statistics	
Run ID	ReInfoSelect
Topic type	feedback
Contributed to judgment sets?	no

Overall measures	
Number of topics	35
Total number retrieved	30798
Total relevant	3002
Total relevant retrieved	1941
MAP	0.2850
Mean Bpref	0.4435
Mean NDCG@10	0.6259
Mean RBP(p=0.5)	0.6670 +0.0464

Document Level Averages	
	Precision
At 5 docs	0.6971
At 10 docs	0.6571
At 15 docs	0.5962
At 20 docs	0.5586
At 30 docs	0.4886
R-Precision	
Exact	0.3304



Per-topic difference from median P@5 for all Round 2 runs

Per-topic difference from median RBP(p=0.5) for all Round 2 runs