

Round 2 results — Run RMITBFuseM1 submitted from RMITB

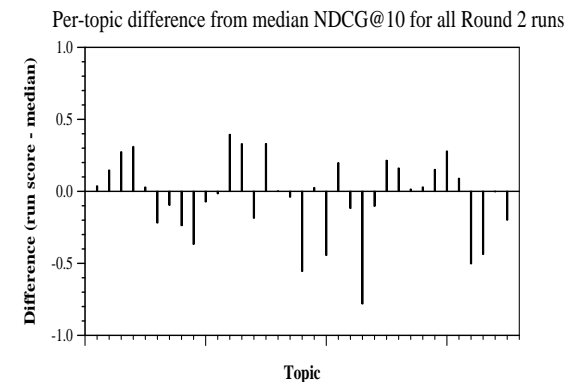
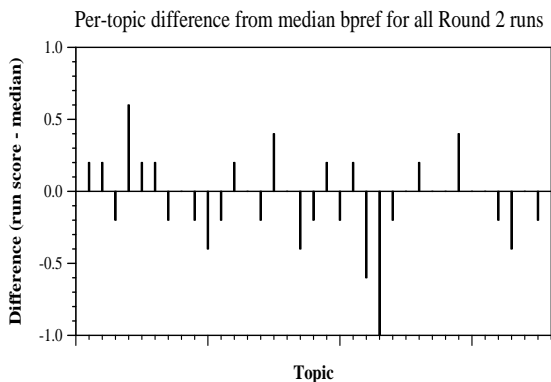
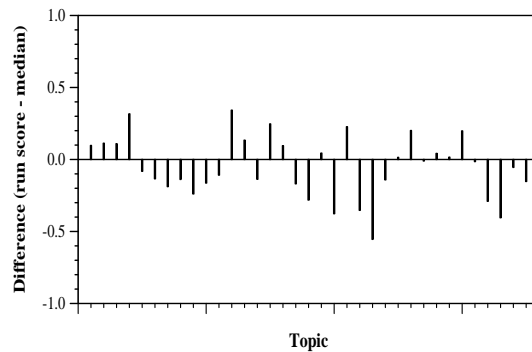
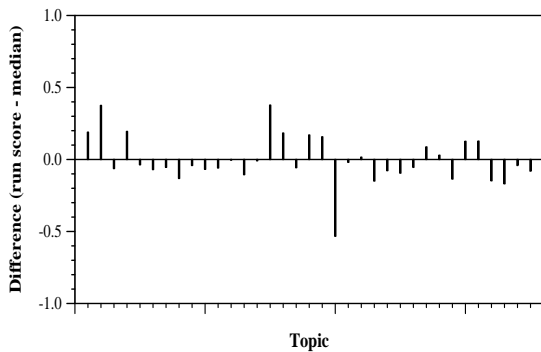
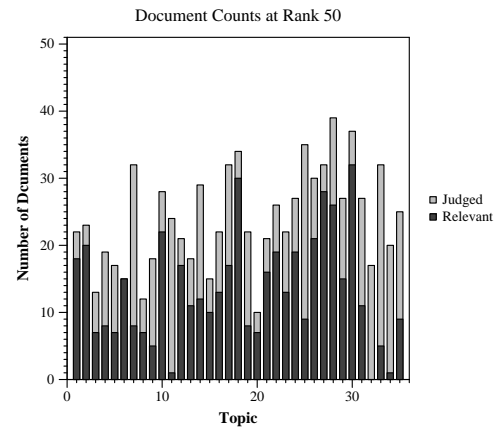
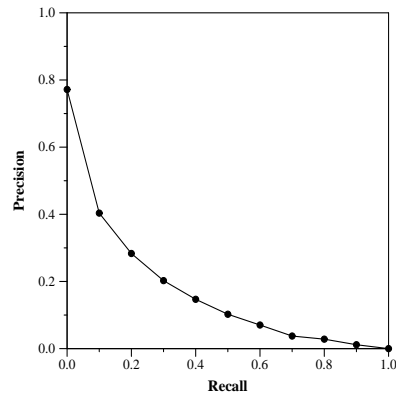
Run Description

Same retrieval method as RMITBFuseM2 in Round 1. However, noting that 10% of Round 1’s relevant judgments were made on documents without an associated PMC or JSON document, which we deleted from our collection, as we expected these invalid entries would not be classified as a document.

Summary Statistics	
Run ID	RMITBFuseM1
Topic type	manual
Contributed to judgment sets?	yes

Overall measures	
Number of topics	35
Total number retrieved	32069
Total relevant	3002
Total relevant retrieved	1601
MAP	0.1572
Mean Bpref	0.3654
Mean NDCG@10	0.4207
Mean RBP(p=0.5)	0.4942 +0.0031

Document Level Averages	
	Precision
At 5 docs	0.5486
At 10 docs	0.4714
At 15 docs	0.4152
At 20 docs	0.3943
At 30 docs	0.3343
R-Precision	
Exact	0.2154



Per-topic difference from median P@5 for all Round 2 runs

Per-topic difference from median RBP(p=0.5) for all Round 2 runs