

Round 2 results — Run PS-r2-allebd submitted from PITT

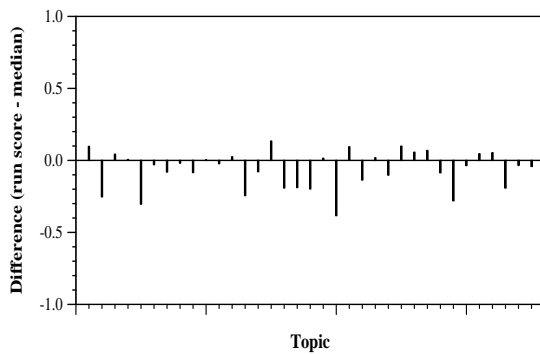
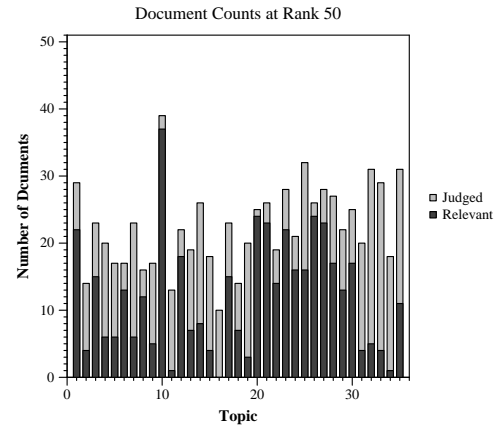
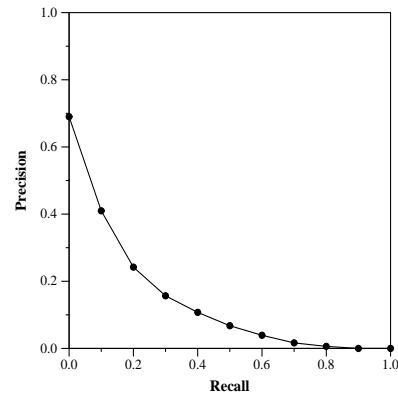
Run Description

The query was generated manually through human by reading the topic, question and narrative section of the topics file and find keywords from it. The query is then expand through the Metamap + Term level Word embedding + topic level embedding. The expanded query is then sent to Elasticsearch engine which use tf-idf model to index and use "BM25" retrieval model to rank the result. Currently, all the words weigh the same inside the query.

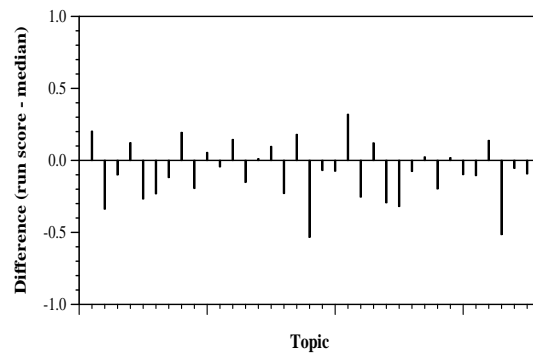
Summary Statistics	
Run ID	PS-r2-allebd
Topic type	manual
Contributed to judgment sets?	yes

Overall measures	
Number of topics	35
Total number retrieved	27684
Total relevant	3002
Total relevant retrieved	1315
MAP	0.1323
Mean Bpref	0.3066
Mean NDCG@10	0.3940
Mean RBP(p=0.5)	0.4648 +0.0033

Document Level Averages	
	Precision
At 5 docs	0.5200
At 10 docs	0.4457
At 15 docs	0.3962
At 20 docs	0.3571
At 30 docs	0.3114
R-Precision	
Exact	0.1867

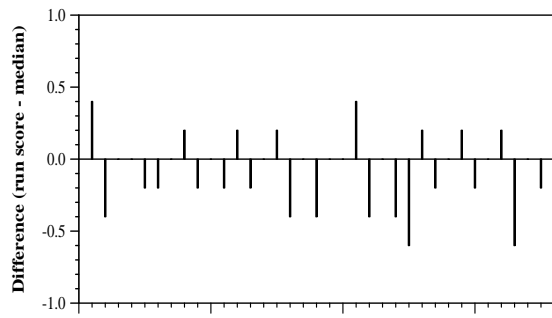


Per-topic difference from median bpref for all Round 2 runs

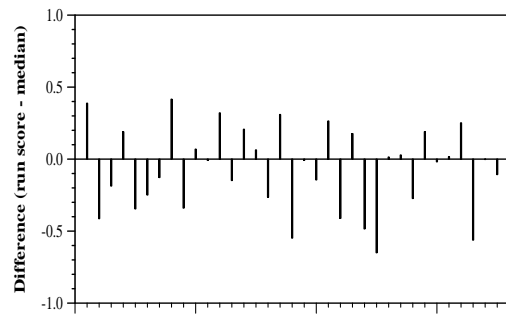


Per-topic difference from median NDCG@10 for all Round 2 runs

Round 2 results — Run PS-r2-allebd submitted from PITT



Topic
Per-topic difference from median P@5 for all Round 2 runs



Topic
Per-topic difference from median RBP(p=0.5) for all Round 2 runs