

Round 2 results — Run PL2_Bo1QE submitted from UB_BW

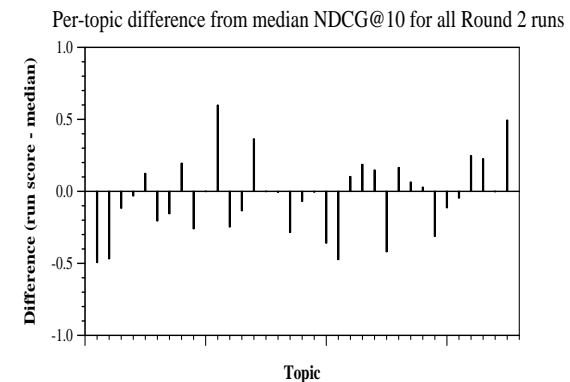
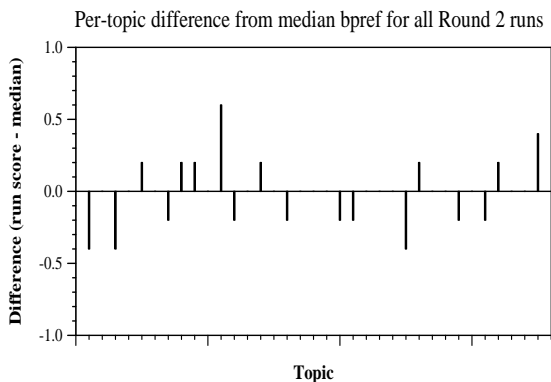
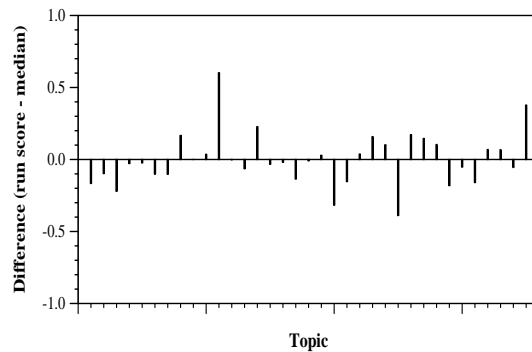
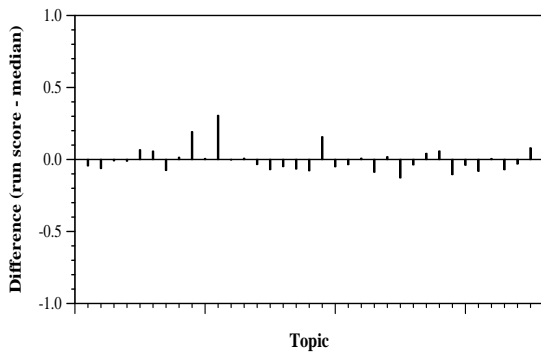
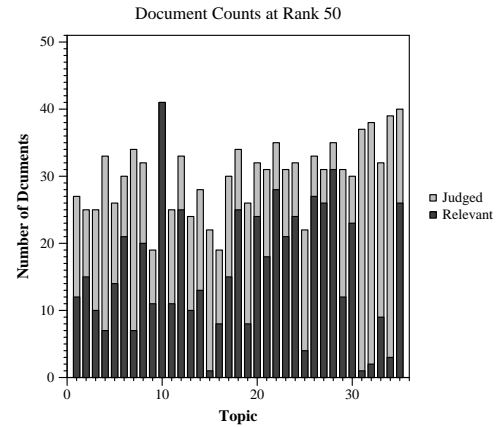
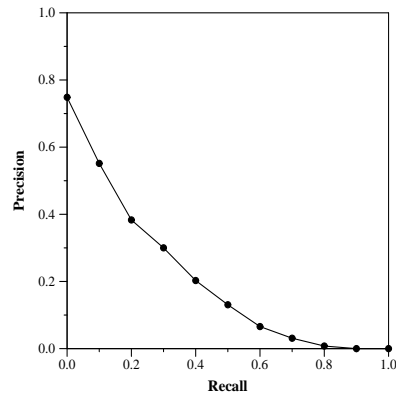
Run Description

We indexed only the title and the abstract using Terrier-v5.2. For the final document ranking, we deployed PL2 term weighting model. During retrieval, we used both the query and the question tags, which were then expanded with terms selected using the Bo1 model for query expansion

Summary Statistics	
Run ID	PL2_Bo1QE
Topic type	automatic
Contributed to judgment sets?	no

Overall measures	
Number of topics	35
Total number retrieved	31667
Total relevant	3002
Total relevant retrieved	1609
MAP	0.1967
Mean Bpref	0.3662
Mean NDCG@10	0.4715
Mean RBP(p=0.5)	0.4970 +0.0059

Document Level Averages	
	Precision
At 5 docs	0.5886
At 10 docs	0.5286
At 15 docs	0.4990
At 20 docs	0.4529
At 30 docs	0.3867
R-Precision	
Exact	0.2603



Per-topic difference from median P@5 for all Round 2 runs

Per-topic difference from median RBP(p=0.5) for all Round 2 runs