

Round 2 results — Run OHSU_BCB_round2 submitted from OHSU

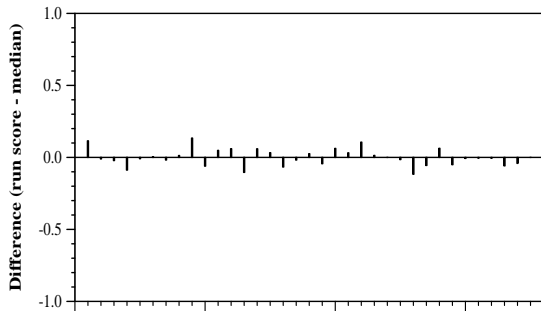
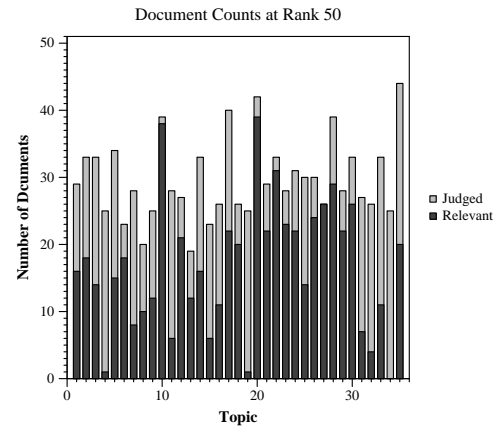
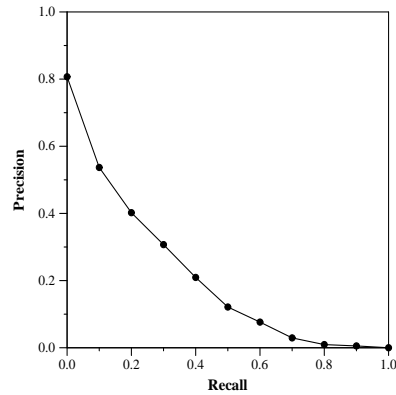
Run Description

Three Pyserini queries were created per topic using the query, question, and narrative fields on full text. After search was performed using a SimpleSearcher, scores were normalized and summed for a final score. The question query was weighted slightly higher because it appeared to retrieve better results based on review of round 1 results.

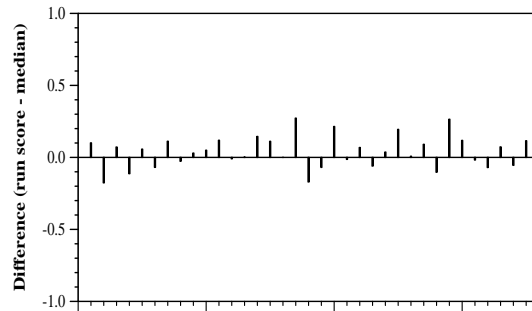
Summary Statistics	
Run ID	OHSU_BCB_round2
Topic type	manual
Contributed to judgment sets?	no

Overall measures	
Number of topics	35
Total number retrieved	34712
Total relevant	3002
Total relevant retrieved	1594
MAP	0.1998
Mean Bpref	0.3695
Mean NDCG@10	0.5093
Mean RBP(p=0.5)	0.5495 +0.0509

Document Level Averages	
	Precision
At 5 docs	0.5943
At 10 docs	0.5600
At 15 docs	0.5143
At 20 docs	0.4871
At 30 docs	0.4076
R-Precision	
Exact	0.2586

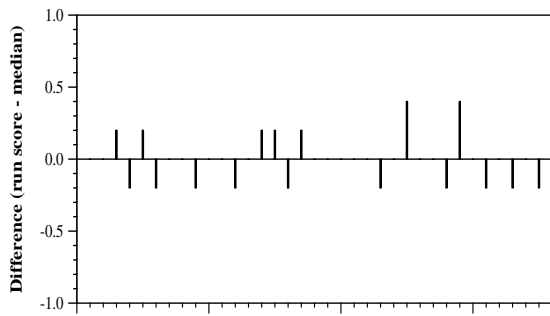


Per-topic difference from median bpref for all Round 2 runs

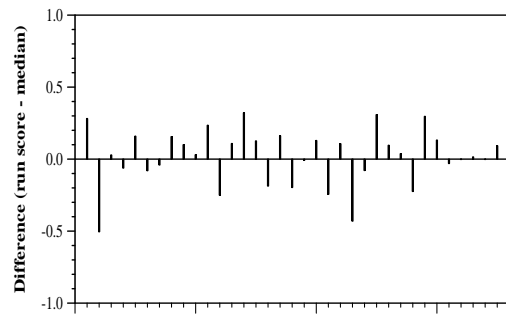


Per-topic difference from median NDCG@10 for all Round 2 runs

Round 2 results — Run OHSU_BCB_round2 submitted from OHSU



Per-topic difference from median P@5 for all Round 2 runs



Per-topic difference from median RBP(p=0.5) for all Round 2 runs