

Round 2 results — Run Emory_IRLab_Run1 submitted from Emory_IRLab

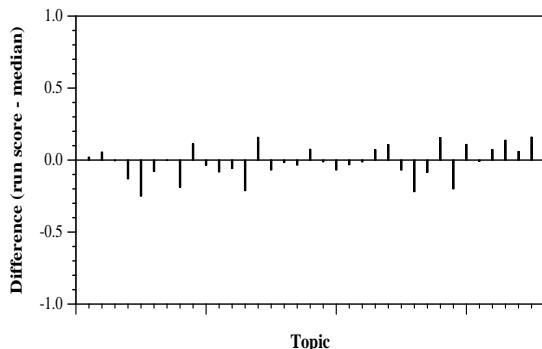
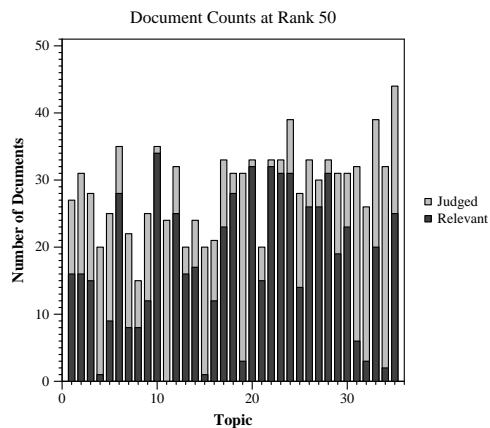
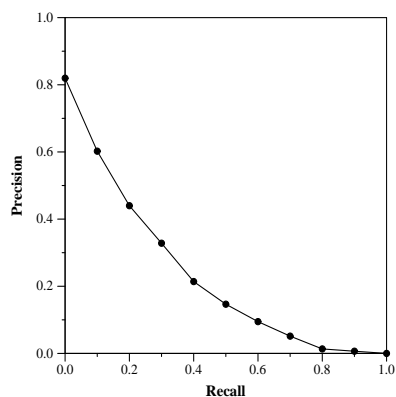
Run Description

The initial results are retrieved with SLEDGE on the whole collections on history, with BM25 and query over fulltext, re-ranking using SciBERT on title and abstract with the question. Then the results are reranked with an inverse-time-decay mechanism and a time score is used as an additional term for reranking. The time score of documents published before 2010 is assigned as 0 and the subsequent published documents is assigned with a scaled score. The weight between the score from SLEDGE and time term is tuned for better performance based on the evaluation from round 1.

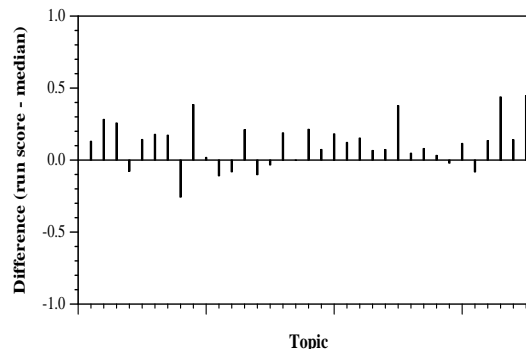
Summary Statistics	
Run ID	Emory_IRLab_Run1
Topic type	automatic
Contributed to judgment sets?	yes

Overall measures	
Number of topics	35
Total number retrieved	15080
Total relevant	3002
Total relevant retrieved	1240
MAP	0.2247
Mean Bpref	0.3539
Mean NDCG@10	0.5832
Mean RBP(p=0.5)	0.6338 +0.0020

Document Level Averages	
	Precision
At 5 docs	0.6971
At 10 docs	0.6286
At 15 docs	0.5657
At 20 docs	0.5129
At 30 docs	0.4429
R-Precision	
Exact	0.2795

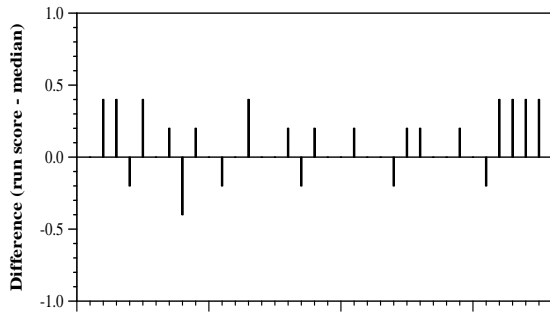


Per-topic difference from median bpref for all Round 2 runs

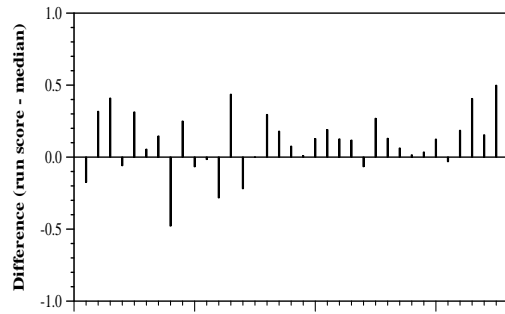


Per-topic difference from median NDCG@10 for all Round 2 runs

Round 2 results — Run Emory_IRLab_Run1 submitted from Emory_IRLab



Per-topic difference from median P@5 for all Round 2 runs



Per-topic difference from median RBP($p=0.5$) for all Round 2 runs