

Round 2 results — Run BITEM_BL submitted from BITEM

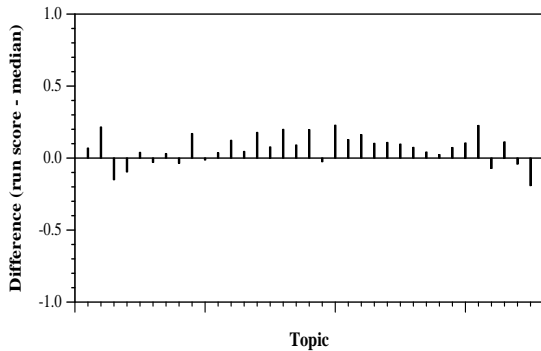
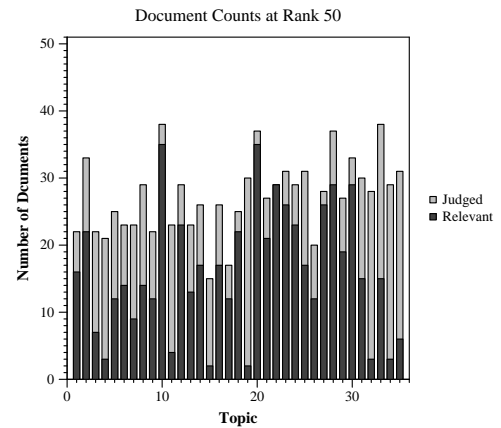
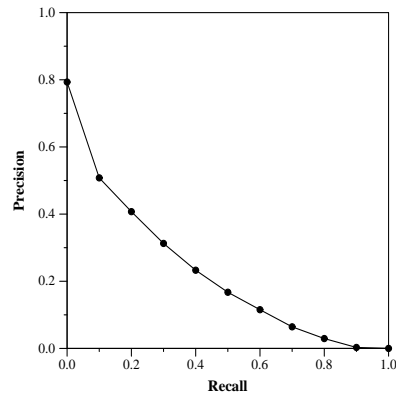
Run Description

Lucene Elasticsearch engine, Okapi BM25 Topic description -> all fields used (query + question + narrative)
 -> token filtering based on PMC Document Frequencies in order to discard common words -> tokens boosted based on PMC Document Frequencies -> for query field, add "query" (e.g. topic 1: coronavirus origin "coronavirus origin") Normalization -> documents and queries normalized (text mining) with a dedicated COVID vocabulary (link ?) Reranking -> boost (*2) documents with pubyear = 2020 (60% of qrel while 10% of collection)

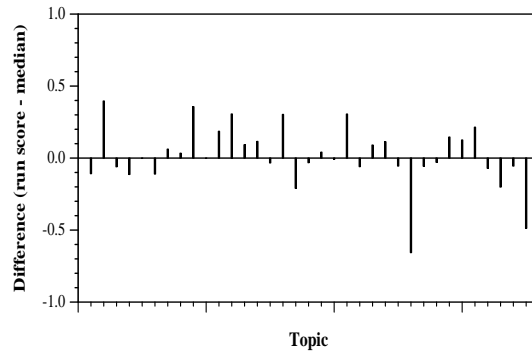
Summary Statistics	
Run ID	BITEM_BL
Topic type	automatic
Contributed to judgment sets?	yes

Overall measures	
Number of topics	35
Total number retrieved	35000
Total relevant	3002
Total relevant retrieved	1876
MAP	0.2180
Mean Bpref	0.4358
Mean NDCG@10	0.4875
Mean RBP(p=0.5)	0.5411 +0.0026

Document Level Averages	
	Precision
At 5 docs	0.6000
At 10 docs	0.5314
At 15 docs	0.4838
At 20 docs	0.4357
At 30 docs	0.4000
R-Precision	
Exact	0.2671

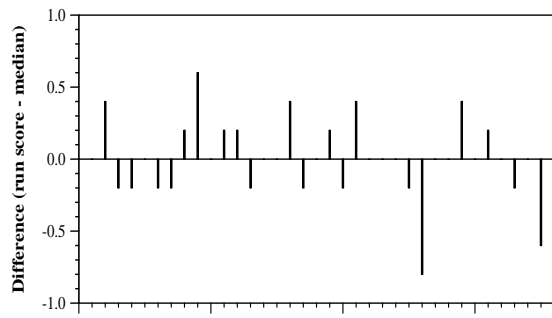


Per-topic difference from median bpref for all Round 2 runs

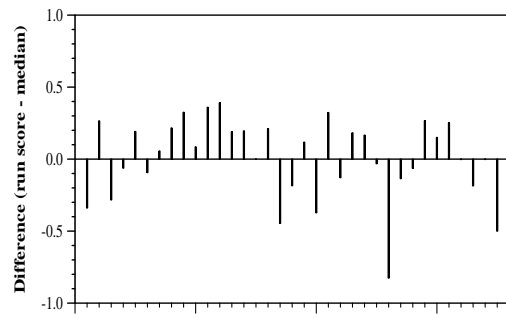


Per-topic difference from median NDCG@10 for all Round 2 runs

Round 2 results — Run BITEM_BL submitted from BITEM



Topic
Per-topic difference from median P@5 for all Round 2 runs



Topic
Per-topic difference from median RBP(p=0.5) for all Round 2 runs