

## Round 1 results — Run smith.ql submitted from smith

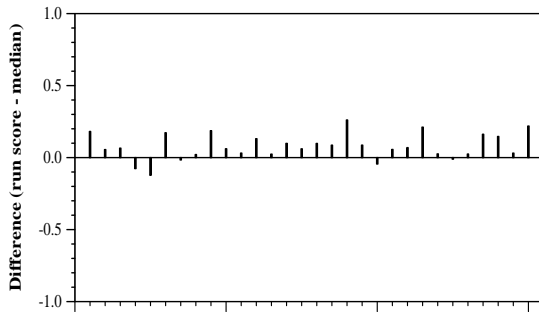
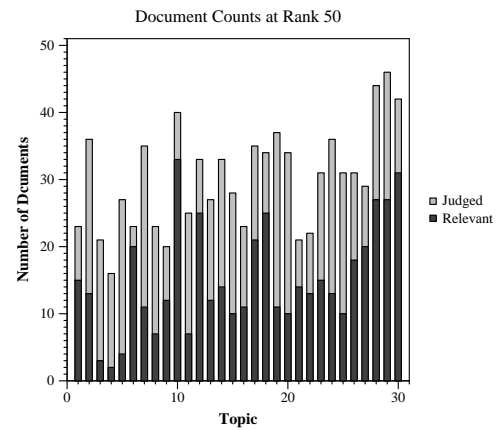
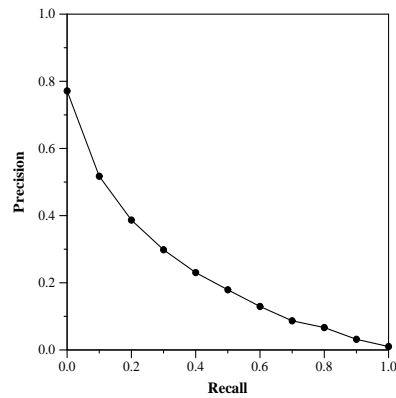
### Run Description

QL run over as much text as was available. <https://github.com/jjfiv/trec-covid/tree/round1-submit>

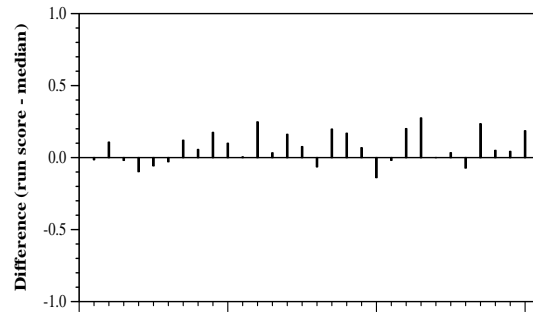
Summary Statistics	
Run ID	smith.ql
Topic type	automatic
Contributed to judgment sets?	no

Overall measures	
Number of topics	30
Total number retrieved	30000
Total relevant	2352
Total relevant retrieved	1463
MAP	0.2200
Mean Bpref	0.4022
Mean NDCG@10	0.4261

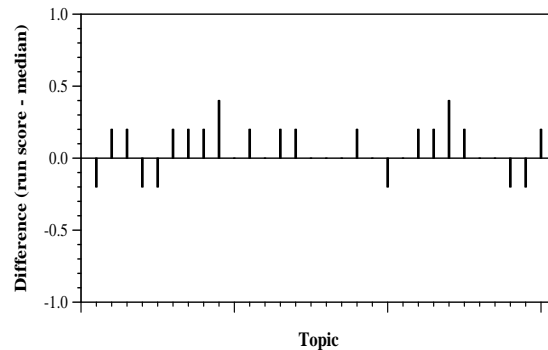
Document Level Averages	
	Precision
At 5 docs	0.5600
At 10 docs	0.4933
At 15 docs	0.4711
At 20 docs	0.4367
At 30 docs	0.3733
R-Precision	
Exact	0.2728



Per-topic difference from median bpref for all Round 1 runs



Per-topic difference from median NDCG@10 for all Round 1 runs



Per-topic difference from median P@5 for all Round 1 runs