

Round 1 results — Run sab20.1.merged submitted from sabir

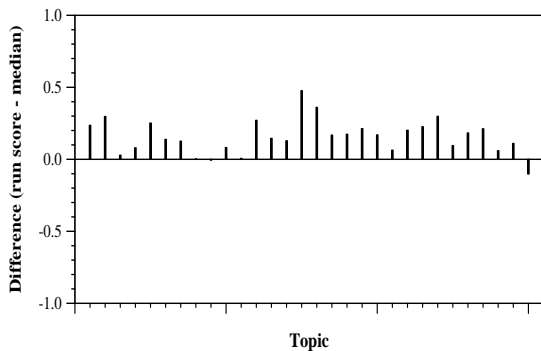
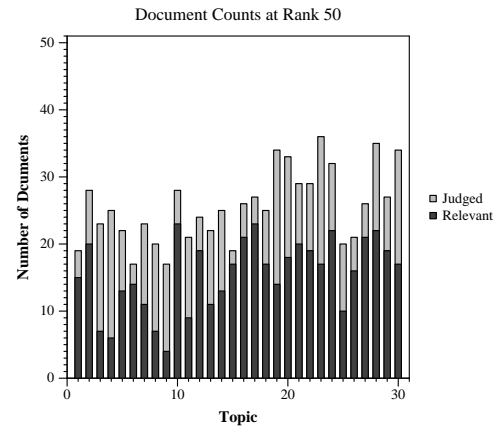
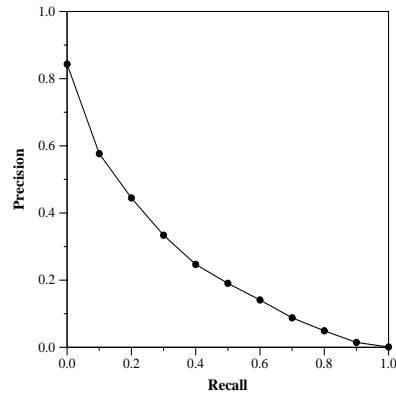
Run Description

Simple SMART vector run, Lnu docs and ltu queries. All document representations combined into one vector at indexing time (tf weighted vectors for metadata file plus all JSON representations all added together, and then reweighted as Lnu). Full topics including narrative.

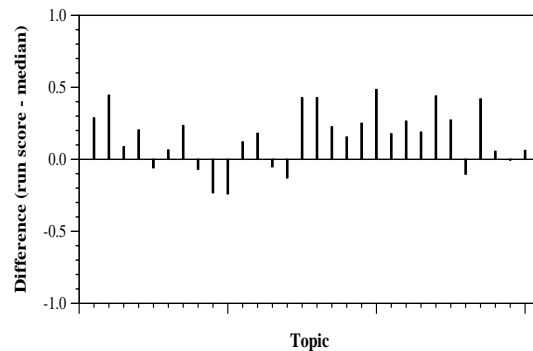
Summary Statistics	
Run ID	sab20.1.merged
Topic type	automatic
Contributed to judgment sets?	no

Overall measures	
Number of topics	30
Total number retrieved	30000
Total relevant	2352
Total relevant retrieved	1690
MAP	0.2410
Mean Bpref	0.4819
Mean NDCG@10	0.5115

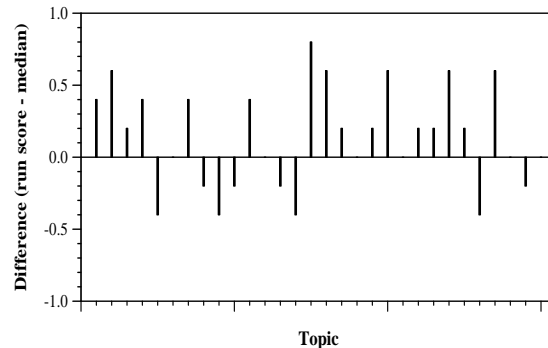
Document Level Averages	
	Precision
At 5 docs	0.6267
At 10 docs	0.5867
At 15 docs	0.5311
At 20 docs	0.4867
At 30 docs	0.4056
R-Precision	
Exact	0.2812



Per-topic difference from median bpref for all Round 1 runs



Per-topic difference from median NDCG@10 for all Round 1 runs



Per-topic difference from median P@5 for all Round 1 runs