

Round 1 results — Run lda400s5000 submitted from TM_IR_HITZ

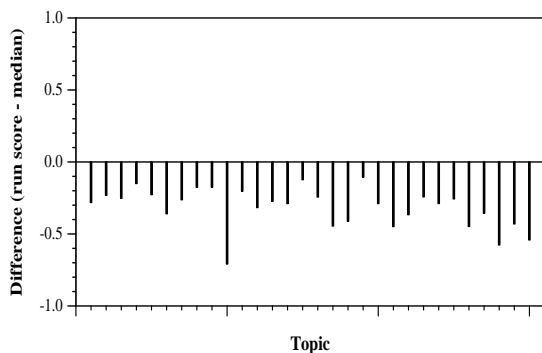
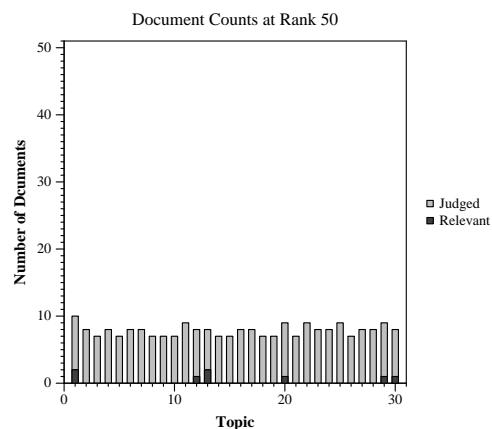
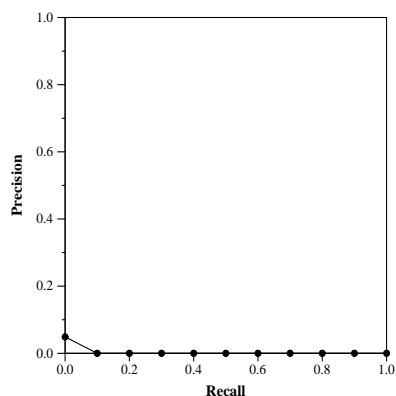
Run Description

The submitted system has two components. The first component is a LDA based recommender system, which helps identifying paper topically related to the narrative and question, and automatically created subset to be indexed. LDA models 400 topics on abstracts. The second component is an information retrieval system, based on the classical BM25F search algorithm. This system indexes not only the abstracts, but also paragraphs on the full text of the papers.

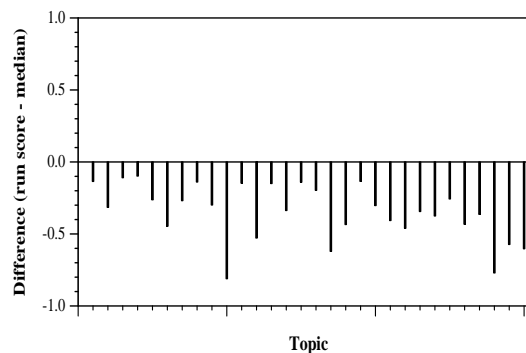
Summary Statistics	
Run ID	lda400s5000
Topic type	automatic
Contributed to judgment sets?	yes

Overall measures	
Number of topics	30
Total number retrieved	4990
Total relevant	2352
Total relevant retrieved	30
MAP	0.0006
Mean Bpref	0.0098
Mean NDCG@10	0.0102

Document Level Averages	
	Precision
At 5 docs	0.0133
At 10 docs	0.0067
At 15 docs	0.0067
At 20 docs	0.0067
At 30 docs	0.0056
R-Precision	
Exact	0.0054

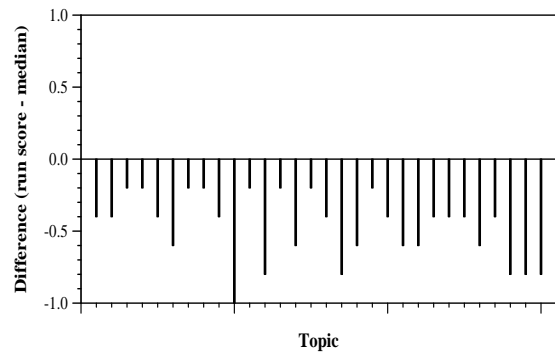


Per-topic difference from median bpref for all Round 1 runs



Per-topic difference from median NDCG@10 for all Round 1 runs

Round 1 results — Run lda400s5000 submitted from TM_IR_HITZ



Per-topic difference from median P@5 for all Round 1 runs