

## Round 1 results — Run jlrecall submitted from julielab

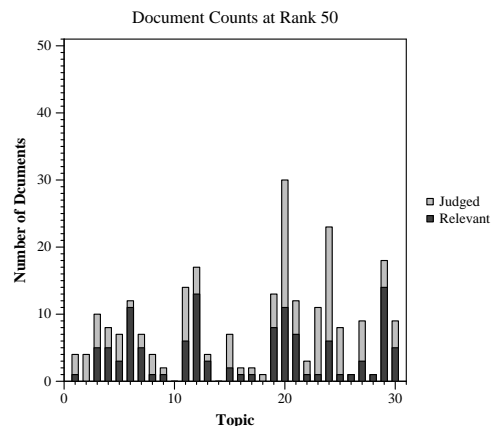
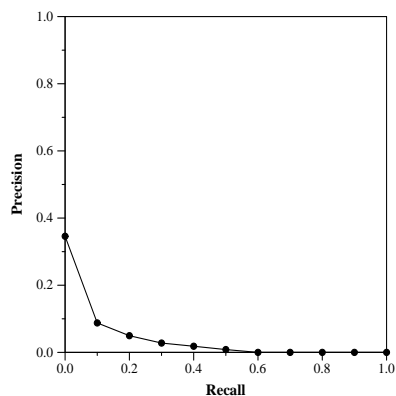
### Run Description

Indexing of text contents into ElasticSearch 7.0.1 with default settings.. Searching: We downloaded the UMLS (Version 2019AB). We used the Jena UMLS Filter Tool (JuFiT, <https://github.com/JULIELab/jufit>) to filter the UMLS for English terms belonging to a manually composed list of nearly 50 Semantic Type Groups. The semantic types were selected to compile a dictionary of anatomy, drugs, diseases, symptoms, disorders, and common behavior about people. The goal was to augment the topic information with terms that could help in the search vor COVID-19 literature. This is the employed UMLS term group: T052 ACTI Activity T053 ACTI Behavior T055 ACTI Individual\_Behavior T056 ACTI Daily\_or\_Recreational\_Activity T017 ANAT Anatomical\_Structure T021 ANAT Fully\_Formed\_Anatomical\_Structure T022 ANAT Body\_System T023 ANAT Body\_Part,\_Organ,\_or\_Organ\_Component T024 ANAT Tissue T029 ANAT Body\_Location\_or\_Region T030 ANAT Body\_Space\_or\_Junction T031 ANAT Body\_Substance T121 CHEM Pharmacologic\_Substance T129 CHEM Immunologic\_Factor T130 CHEM Indicator,\_Reagent,\_or\_Diagnostic\_Aid T195 CHEM Antibiotic T200 CHEM Clinical\_Drug T079 CONC Temporal\_Concept T081 CONC Quantitative\_Concept T170 CONC Intellectual\_Product T074 DEVI Medical\_Device T075 DEVI Research\_Device T203 DEVI Drug\_Delivery\_Device T020 DISO Acquired\_Abnormality T033 DISO Finding T047 DISO Disease\_or\_Syndrome T184 DISO Sign\_or\_Symptom T190 DISO Anatomical\_Abnormality T083 GEOG Geographic\_Area T005 LIVB Virus T016 LIVB Human T098 LIVB Population\_Group T099 LIVB Family\_Group T100 LIVB Age\_Group T101 LIVB Patient\_or\_Disabled\_Group T073 OBJC Manufactured\_Object T093 ORGA Health\_Care\_Related\_Organism T034 PHEN Laboratory\_or\_Test\_Result T038 PHEN Biologic\_Function T032 PHYS Organism\_Attribute T039 PHYS Physiologic\_Function T040 PHYS Organism\_Function T042 PHYS Organ\_or\_Tissue\_Function T201 PHYS Clinical\_Attribute T058 PROC Health\_Care\_Activity T059 PROC Laboratory\_Procedure T060 PROC Diagnostic\_Procedure T061 PROC Therapeutic\_or\_Preventive\_Procedure T062 PROC Research\_Activity T063 PROC Molecular\_Biology\_Research\_Technique

Summary Statistics	
Run ID	jlrecall
Topic type	automatic
Contributed to judgment sets?	no

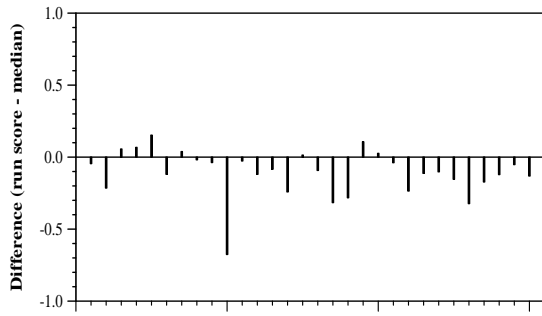
Overall measures	
Number of topics	30
Total number retrieved	30000
Total relevant	2352
Total relevant retrieved	658
MAP	0.0291
Mean Bpref	0.2172
Mean NDCG@10	0.1151

Document Level Averages	
	Precision
At 5 docs	0.1600
At 10 docs	0.1300
At 15 docs	0.1200
At 20 docs	0.1033
At 30 docs	0.0833
R-Precision	
Exact	0.0667

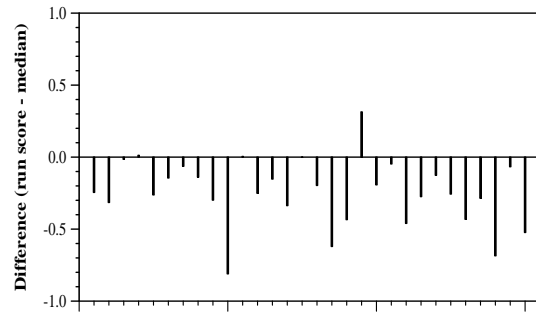


## Round 1 results — Run jlrecall submitted from julielab

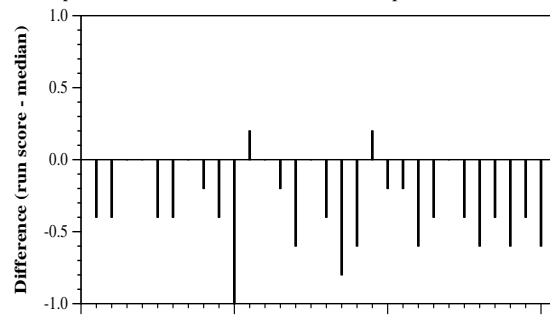
---



Per-topic difference from median bpref for all Round 1 runs



Per-topic difference from median NDCG@10 for all Round 1 runs



Per-topic difference from median P@5 for all Round 1 runs