

Round 1 results — Run jlprec submitted from julielab

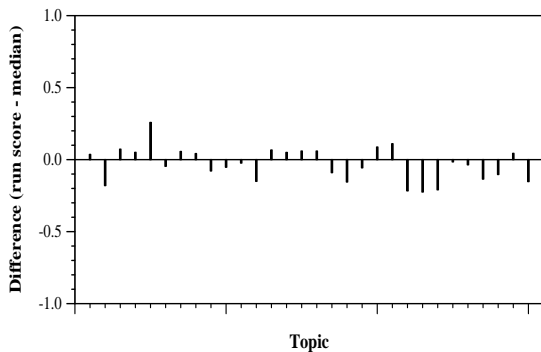
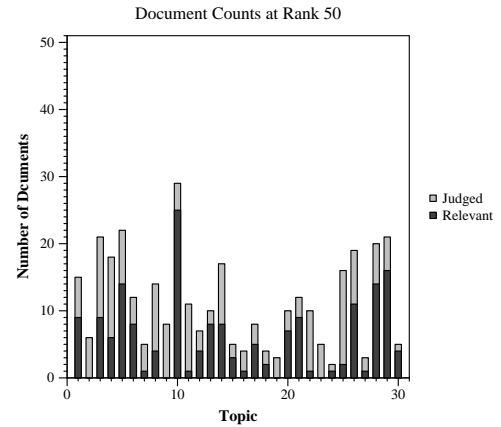
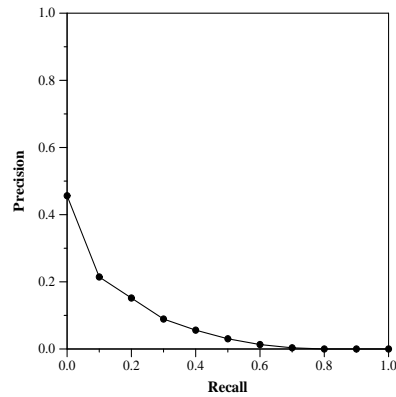
Run Description

Indexing of text contents into Elasticsearch 7.0.1 with default settings. Searching: In most queries the token "coronavirus" is present. However, coronaviridae are a family of viruses, that are not limited to only SARS-CoV-2. Thus many false positive are likely to be found. This holds also true for other terms, such as "animal model". This term does not occur often in literature, as most of the researchers specify the animal they used as model organism (such as mice or rats). So we created a list of synonyms to specify these general terms (we use "mouse" as model indicator). We hypothesize that nouns are the the terms that contained the most information. Thus we used a part-of-speech tagger to isolate nouns and used a blacklist to filter them (created manually by query inspection). To mine important terms we used the narrative topic field. The nouns of the query and question were part of the narrative in most cases.

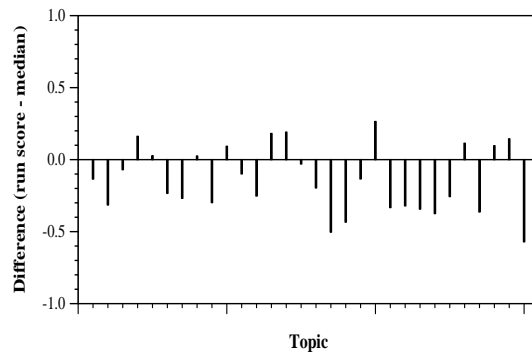
Summary Statistics	
Run ID	jlprec
Topic type	manual
Contributed to judgment sets?	no

Overall measures	
Number of topics	30
Total number retrieved	30000
Total relevant	2352
Total relevant retrieved	1027
MAP	0.0707
Mean Bpref	0.2945
Mean NDCG@10	0.2174

Document Level Averages	
	Precision
At 5 docs	0.2733
At 10 docs	0.2300
At 15 docs	0.2000
At 20 docs	0.1750
At 30 docs	0.1522
R-Precision	
Exact	0.1004

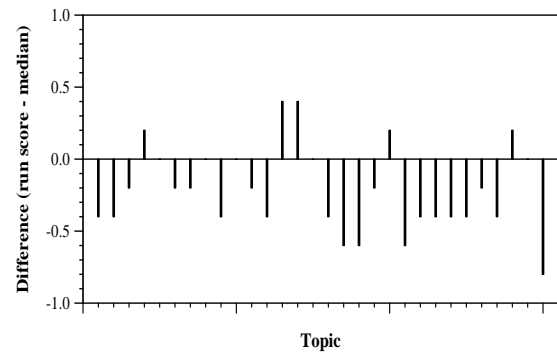


Per-topic difference from median bpref for all Round 1 runs



Per-topic difference from median NDCG@10 for all Round 1 runs

Round 1 results — Run jlprec submitted from julielab



Per-topic difference from median P@5 for all Round 1 runs