

## Round 1 results — Run factum-1 submitted from Factum

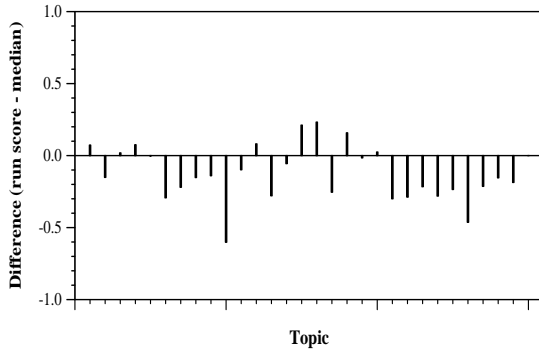
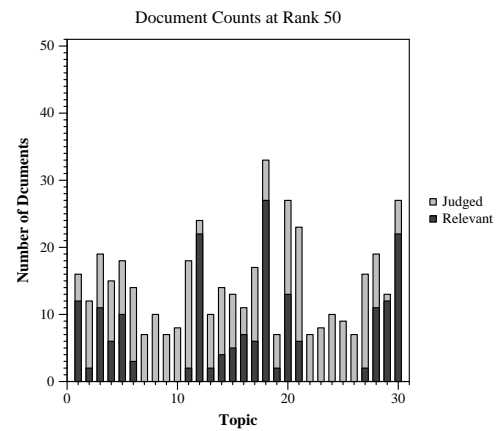
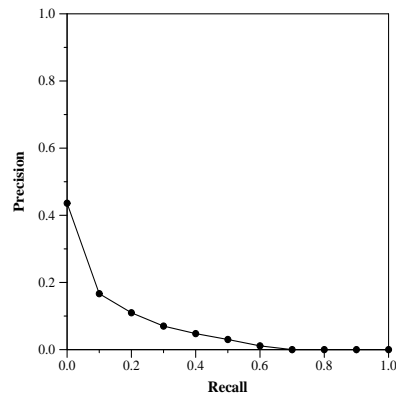
### Run Description

End-to-end retrieval with siamese BERT encoder trained on NLI data (SNLI, Multi-NLI and a new dataset with artificial inference examples). We used the narratives as queries.

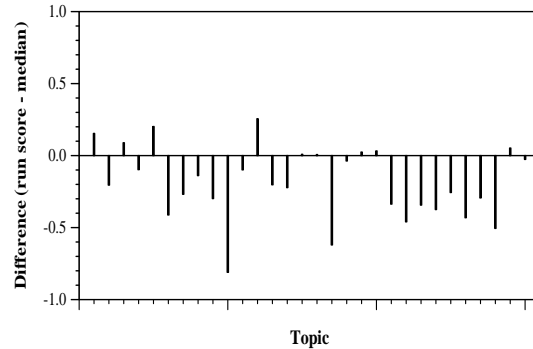
Summary Statistics	
Run ID	factum-1
Topic type	automatic
Contributed to judgment sets?	yes

Overall measures	
Number of topics	30
Total number retrieved	27989
Total relevant	2352
Total relevant retrieved	629
MAP	0.0590
Mean Bpref	0.2014
Mean NDCG@10	0.1713

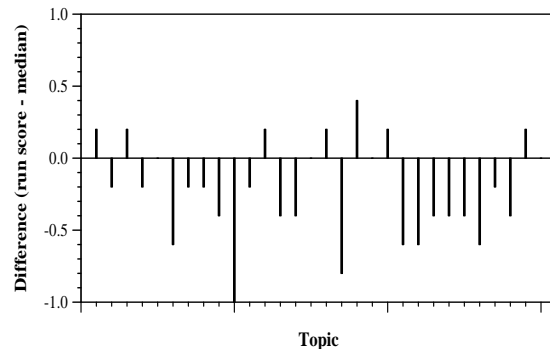
Document Level Averages	
	Precision
At 5 docs	0.2667
At 10 docs	0.2200
At 15 docs	0.1867
At 20 docs	0.1750
At 30 docs	0.1522
R-Precision	
Exact	0.1021



Per-topic difference from median bpref for all Round 1 runs



Per-topic difference from median NDCG@10 for all Round 1 runs



Per-topic difference from median P@5 for all Round 1 runs