

Round 1 results — Run elhuyar\_rRnk\_sbert submitted from Elhuyar\_NLP\_team

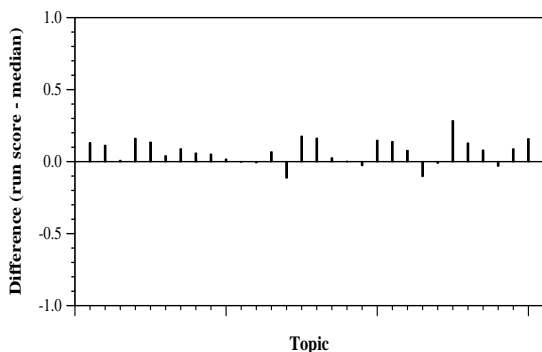
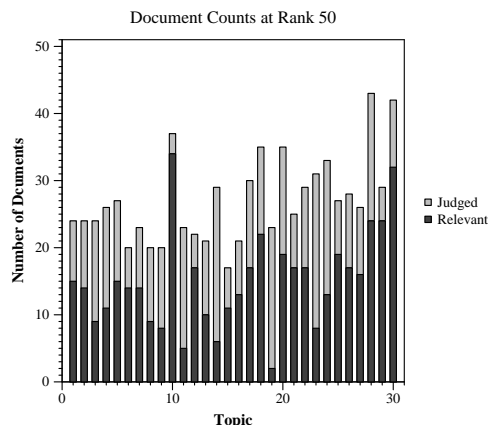
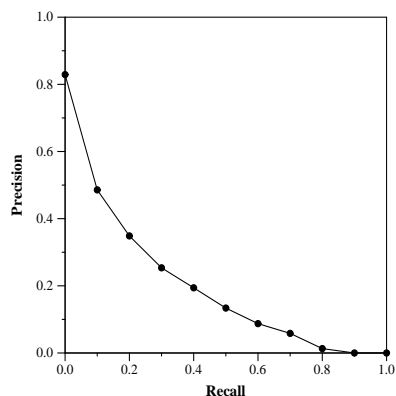
Run Description

We tackle this document retrieval task as a passage retrieval task performed in two steps: a first ranking and b) re-ranking. Our system returns docids of their best scored passages. In order to obtain the first ranking of relevant passages of the collection corresponding to the queries, we use a language modeling based information retrieval approach (Ponte & Croft, 1998). For that purpose, we used the Indri search engine (Strohman, 2005), which combines Bayesian networks with language models. Then, we make a re-ranking by combining Indri scores and cosine similarities between query and first ranking’s passages modeled by SBERT (Reimers and Gurevych, 2020). Specifically, we use bert-large-nli-mean-tokens model trained on SNLI and MultiNLI dataset. This model provides a performance of 79.19 on STSbenchmark.

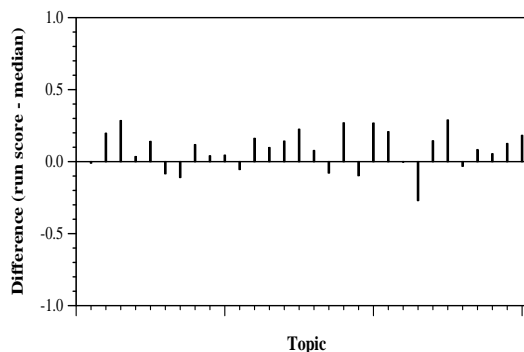
Summary Statistics	
Run ID	elhuyar_rRnk_sbert
Topic type	automatic
Contributed to judgment sets?	no

Overall measures	
Number of topics	30
Total number retrieved	29999
Total relevant	2352
Total relevant retrieved	1320
MAP	0.1893
Mean Bpref	0.3938
Mean NDCG@10	0.4401

Document Level Averages	
	Precision
At 5 docs	0.5867
At 10 docs	0.4933
At 15 docs	0.4467
At 20 docs	0.4050
At 30 docs	0.3656
R-Precision	
Exact	0.2564



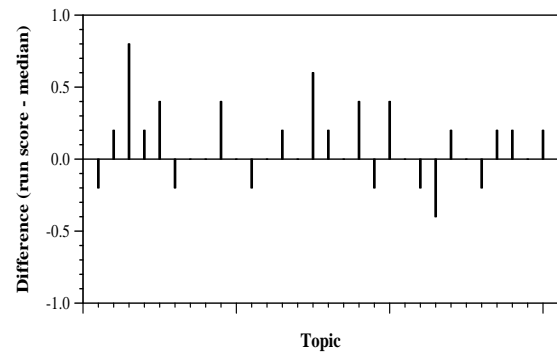
Per-topic difference from median bpref for all Round 1 runs



Per-topic difference from median NDCG@10 for all Round 1 runs

Round 1 results — Run elhuyar\_rRnk\_sbert submitted from Elhuyar\_NLP\_team

---



Per-topic difference from median P@5 for all Round 1 runs