

Round 1 results — Run UIowaS_Run3 submitted from UIowaS

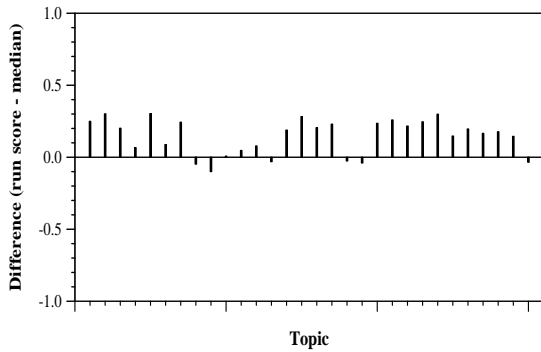
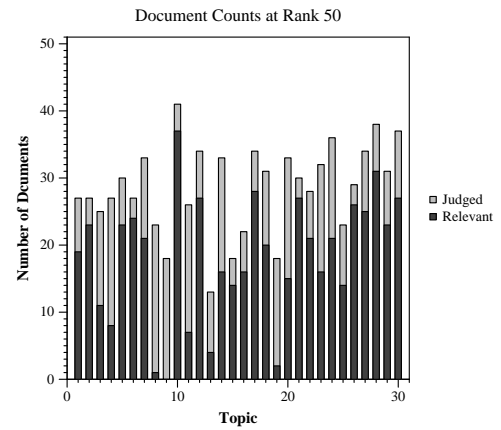
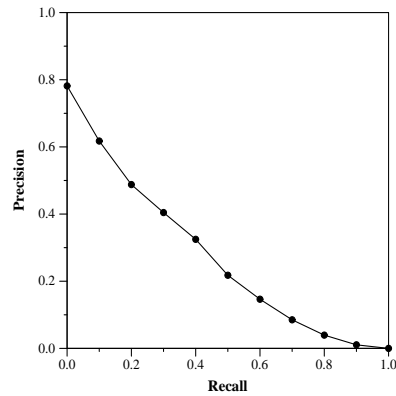
Run Description

The dataset was reduced to those that had at least one occurrence of the following patterns: covid, Covid, corona, Corona, cov, CoV, CORONA, COVID, SARS, COV Also we limited the topic to the query and narrative fields ignoring the question field. We used Terrier as the retrieval system. All runs are 'automatic'. BM25-d: BM25 run with retrieval feedback based query expansion: top 10 docs top 5 terms

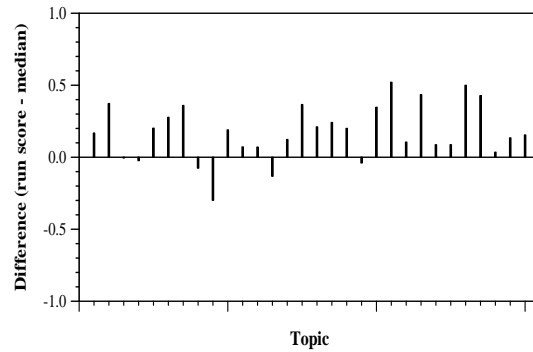
Summary Statistics	
Run ID	UIowaS_Run3
Topic type	automatic
Contributed to judgment sets?	yes

Overall measures	
Number of topics	30
Total number retrieved	30000
Total relevant	2352
Total relevant retrieved	1472
MAP	0.2625
Mean Bpref	0.4686
Mean NDCG@10	0.5286

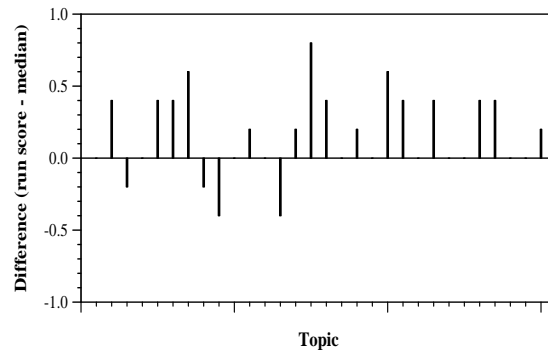
Document Level Averages	
	Precision
At 5 docs	0.6467
At 10 docs	0.5867
At 15 docs	0.5244
At 20 docs	0.4950
At 30 docs	0.4400
R-Precision	
Exact	0.3274



Per-topic difference from median bpref for all Round 1 runs



Per-topic difference from median NDCG@10 for all Round 1 runs



Per-topic difference from median P@5 for all Round 1 runs