

Round 1 results — Run TU_Vienna_TKL_2 submitted from TU_Vienna

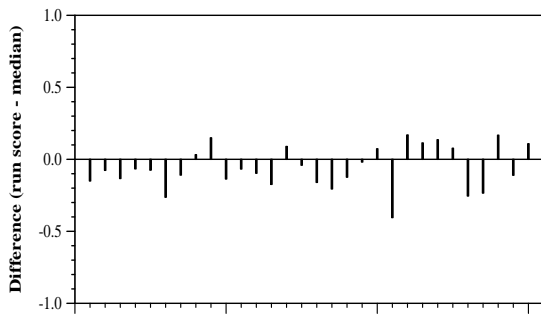
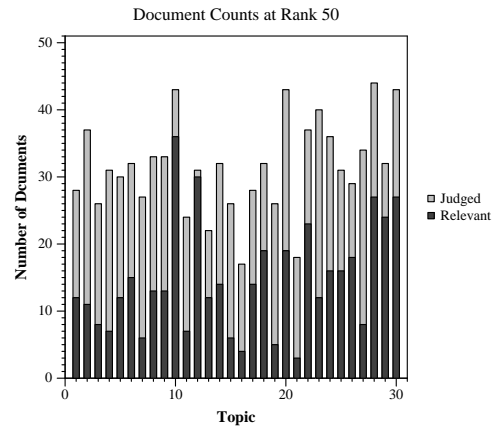
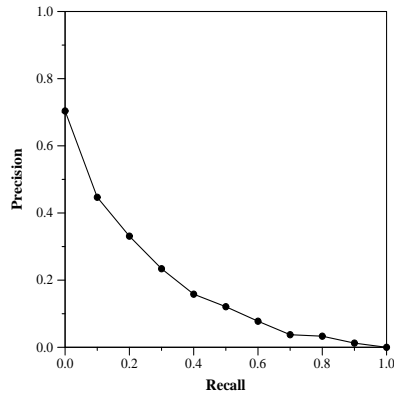
Run Description

re-ranked the top100 of bm25 with TKL (a novel transformer-kernel model for long documents, accepted at sigir20); TKL was trained only on msmarco-document training data from TREC DL 2019 (trec’s annotation have not been used); this version uses the bert embedding layer as base (but no bert attention layers)

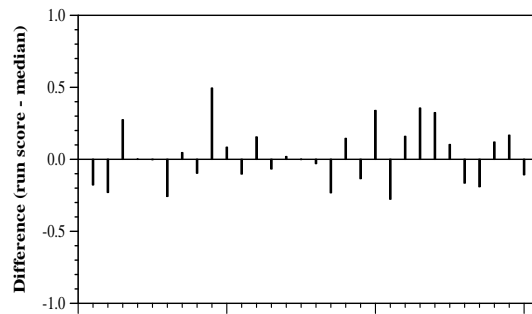
Summary Statistics	
Run ID	TU_Vienna_TKL_2
Topic type	automatic
Contributed to judgment sets?	no

Overall measures	
Number of topics	30
Total number retrieved	2999
Total relevant	2352
Total relevant retrieved	670
MAP	0.1691
Mean Bpref	0.2660
Mean NDCG@10	0.3825

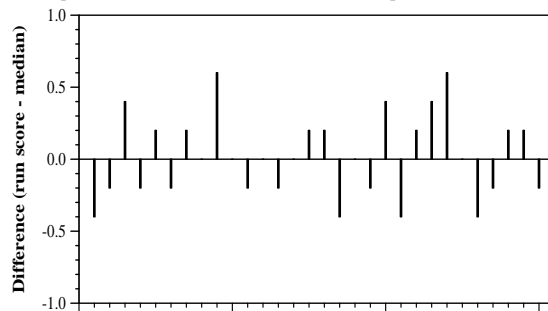
Document Level Averages	
	Precision
At 5 docs	0.5067
At 10 docs	0.4400
At 15 docs	0.3978
At 20 docs	0.3750
At 30 docs	0.3389
R-Precision	
Exact	0.2630



Per-topic difference from median bpref for all Round 1 runs



Per-topic difference from median NDCG@10 for all Round 1 runs



Per-topic difference from median P@5 for all Round 1 runs