

Round 1 results — Run SinequaR1_2 submitted from Sinequa

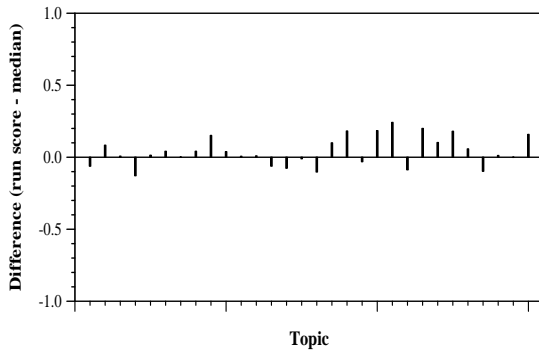
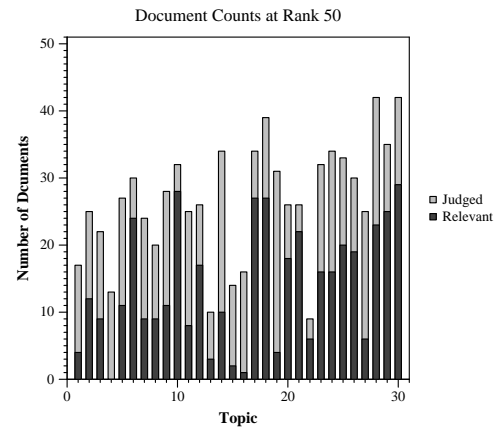
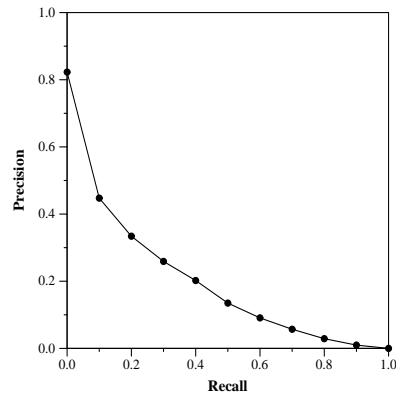
Run Description

Results have been generated using Sinequa search engine relevance computation. We used our baseline computation, with additional configuration as well as query expansion, to adapt to the covid-19 use case. This relevance computation is similar to the one we use at <https://covidsearch.sinequa.com/app/covid-search/#/home>

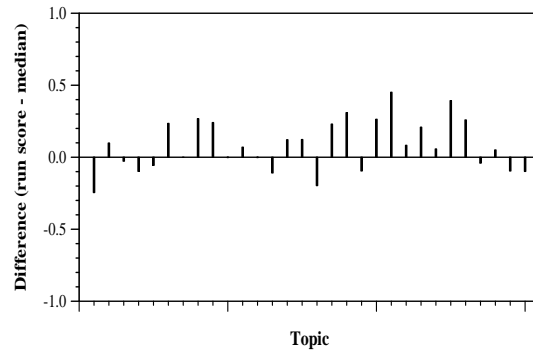
Summary Statistics	
Run ID	SinequaR1_2
Topic type	manual
Contributed to judgment sets?	yes

Overall measures	
Number of topics	30
Total number retrieved	30000
Total relevant	2352
Total relevant retrieved	1242
MAP	0.1865
Mean Bpref	0.3640
Mean NDCG@10	0.4383

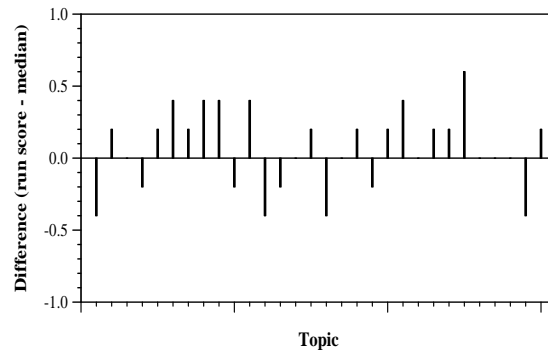
Document Level Averages	
	Precision
At 5 docs	0.5533
At 10 docs	0.4533
At 15 docs	0.4089
At 20 docs	0.3783
At 30 docs	0.3344
R-Precision	
Exact	0.2456



Per-topic difference from median bpref for all Round 1 runs



Per-topic difference from median NDCG@10 for all Round 1 runs



Per-topic difference from median P@5 for all Round 1 runs