

Round 1 results — Run OHSU_RUN1 submitted from OHSU

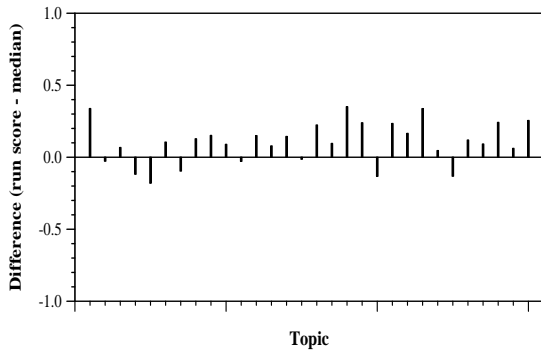
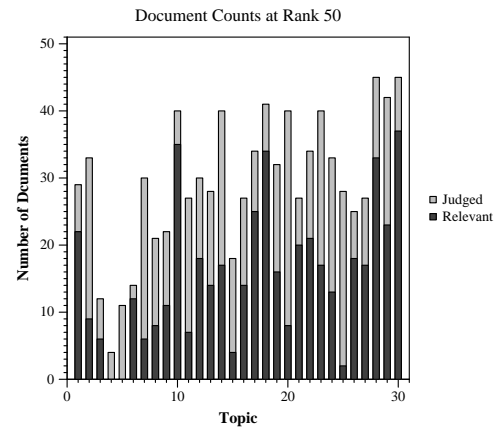
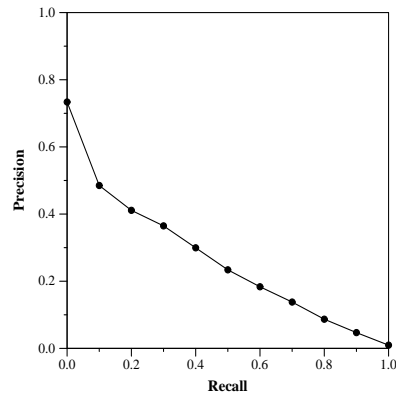
Run Description

Pyserini, a python port of Anserini, was configured to perform a search on a Lucene index of full-text articles from the *CORD-19* dataset. BM25 and RM3 rerankers were hypertuned. The unedited query was used as the search string for the Pyserini SimpleSearcher class, and documents were ranked using the default Anserini scoring system.

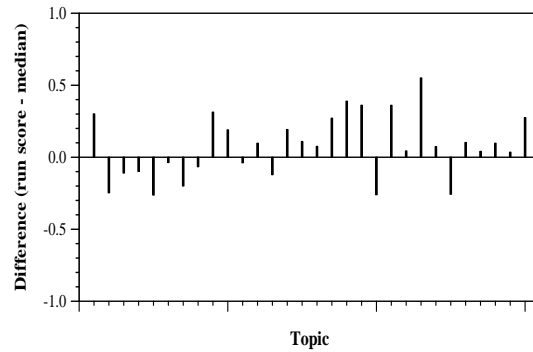
Summary Statistics	
Run ID	OHSU_RUN1
Topic type	automatic
Contributed to judgment sets?	no

Overall measures	
Number of topics	30
Total number retrieved	29971
Total relevant	2352
Total relevant retrieved	1542
MAP	0.2525
Mean Bpref	0.4251
Mean NDCG@10	0.4311

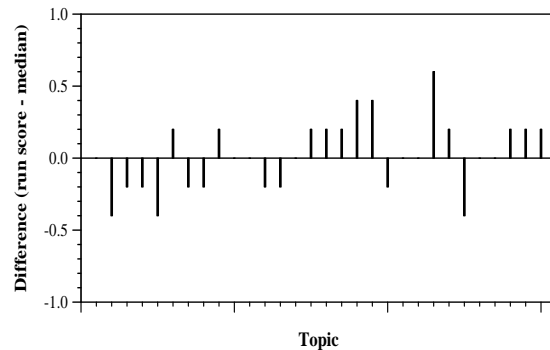
Document Level Averages	
	Precision
At 5 docs	0.5067
At 10 docs	0.4800
At 15 docs	0.4533
At 20 docs	0.4233
At 30 docs	0.3800
R-Precision	
Exact	0.2950



Per-topic difference from median bpref for all Round 1 runs



Per-topic difference from median NDCG@10 for all Round 1 runs



Per-topic difference from median P@5 for all Round 1 runs