

**Round 1 results — Run NTU\_NMLAB\_BM25\_Human submitted from NTU\_NMLab**

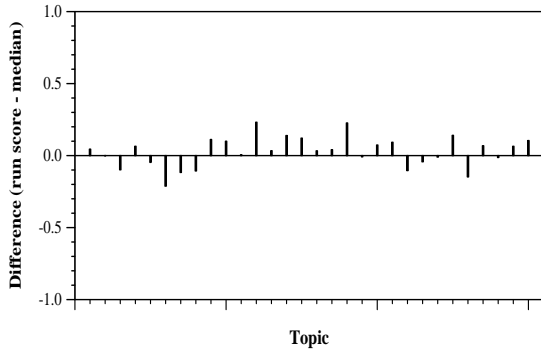
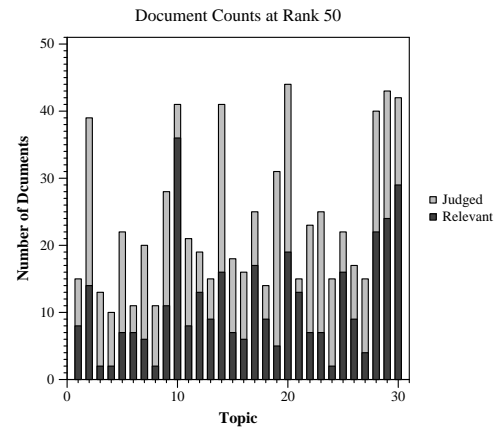
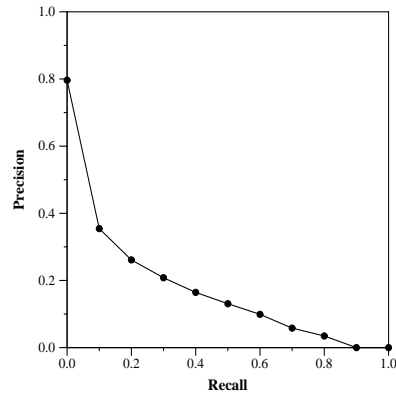
**Run Description**

Used Okapi BM25 model, with parameter  $k=1.5$  and  $b=0.75$ . We captured all words of title, abstract, and whole body text session. For search query, we used human-crafted terms to search through the system.

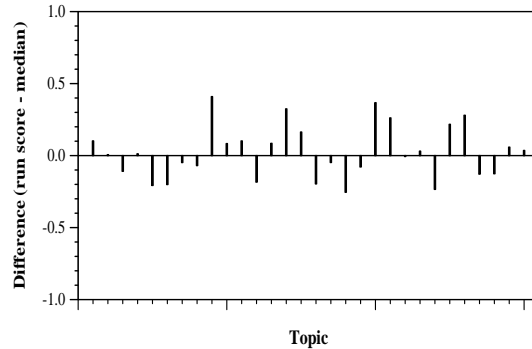
Summary Statistics	
Run ID	NTU_NMLAB_BM25_Human
Topic type	manual
Contributed to judgment sets?	no

Overall measures	
Number of topics	30
Total number retrieved	30000
Total relevant	2352
Total relevant retrieved	1235
MAP	0.1629
Mean Bpref	0.3519
Mean NDCG@10	0.3801

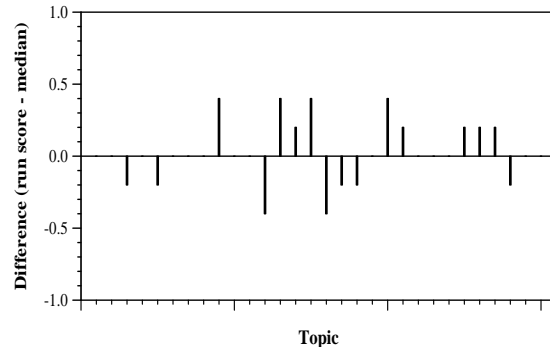
Document Level Averages	
	Precision
At 5 docs	0.5133
At 10 docs	0.4033
At 15 docs	0.3533
At 20 docs	0.3300
At 30 docs	0.2733
R-Precision	
Exact	0.2141



Per-topic difference from median bpref for all Round 1 runs



Per-topic difference from median NDCG@10 for all Round 1 runs



Per-topic difference from median P@5 for all Round 1 runs