

**Round 1 results — Run BRPHJ\_NLP3 submitted from BRPHJ\_NLP**

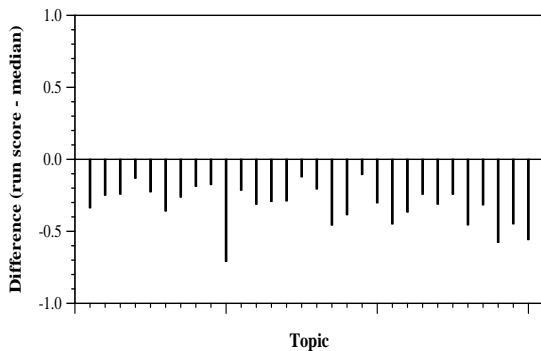
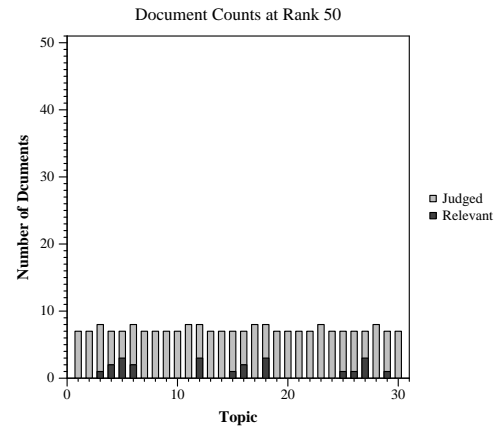
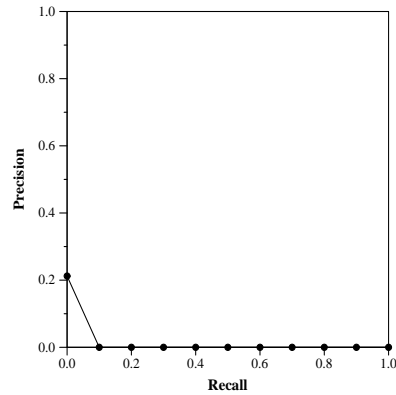
**Run Description**

We used a closed domain question answering approach that has 2 stages - Retriever and Reader. Retriever fetches most relevant docs based on the question, while the Reader (a BERT QA model) provides most relevant answers for the question, along with the docs where the answer was found.

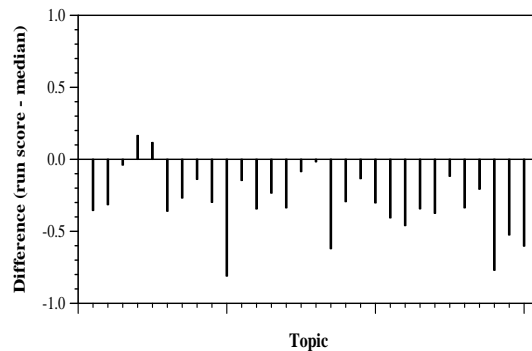
Summary Statistics	
Run ID	BRPHJ_NLP3
Topic type	automatic
Contributed to judgment sets?	yes

Overall measures	
Number of topics	30
Total number retrieved	3652
Total relevant	2352
Total relevant retrieved	23
MAP	0.0045
Mean Bpref	0.0081
Mean NDCG@10	0.0597

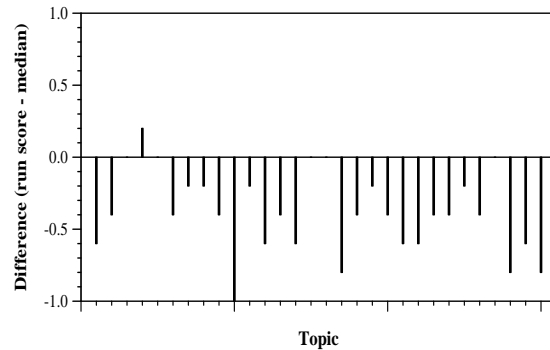
Document Level Averages	
	Precision
At 5 docs	0.1067
At 10 docs	0.0700
At 15 docs	0.0467
At 20 docs	0.0367
At 30 docs	0.0244
R-Precision	
Exact	0.0083



Per-topic difference from median bpref for all Round 1 runs



Per-topic difference from median NDCG@10 for all Round 1 runs



Per-topic difference from median P@5 for all Round 1 runs